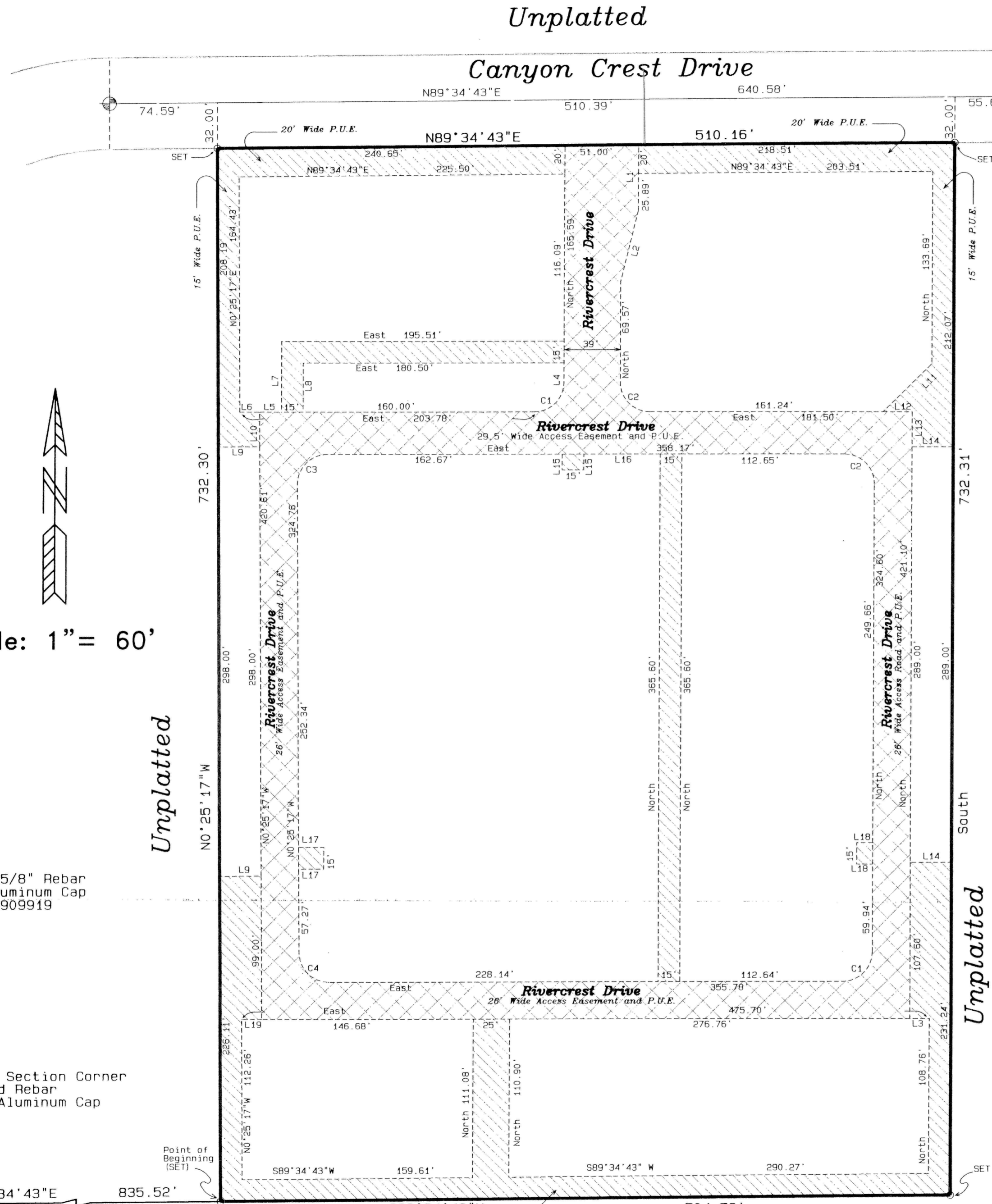


Rivercrest Apartments Planned Unit Development

Part of the Southwest Quarter of
Section 33, T.9S., R17E, B.M.
Twin Falls County, Idaho
2003



Curve Information

CURVE	RADIUS	ANGLE	LENGTH	CHORD	CHORD BEARING
C1	20.50'	90°00'00"	32.20'	28.99'	N45°00'00"E
C2	20.50'	90°00'00"	32.20'	28.99'	N45°00'00"W
C3	20.50'	90°25'17"	32.35'	29.10'	N44°47'22"E
C4	20.50'	89°34'43"	32.05'	170.78'	N45°12'38"W

Line Information

LINE	BEARING	DISTANCE
L1	North	45.89'
L2	N13°29'45"E	51.42'
L3	East	13.50'
L4	North	14.00'
L5	East	15.03'
L6	East	13.75'
L7	North	49.50'
L8	North	34.50'
L9	N89°28'37"E	28.75'
L10	N0°25'17"W	24.11'
L11	N45°00'00"E	47.74'
L12	East	20.26'
L13	North	24.50'
L14	East	28.50'
L15	North	11.00'
L16	East	52.86'
L17	East	17.50'
L18	East	11.00'
L19	East	13.75'

Legend

- Access Road and Public Utility Easement
- Public Utility Easement
- Section Line and Ties
- Boundary Line
- Centerline of Road
- Edge of Easement
- Section Corner Existing Monument
- Section Corner No Monument Found
- Centerline Monument 5/8" Rebar to be set
- Boundary Point 5/8" Rebar and Plastic Cap to be set

Scale: 1" = 60'

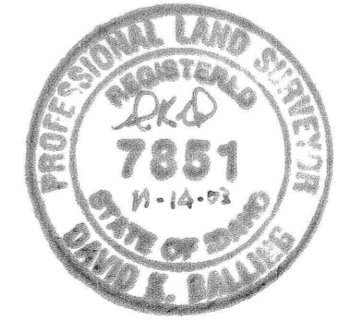


Found 5/8" Rebar and Aluminum Cap C.P. #909919

1/16 Section Corner Found Rebar and Aluminum Cap

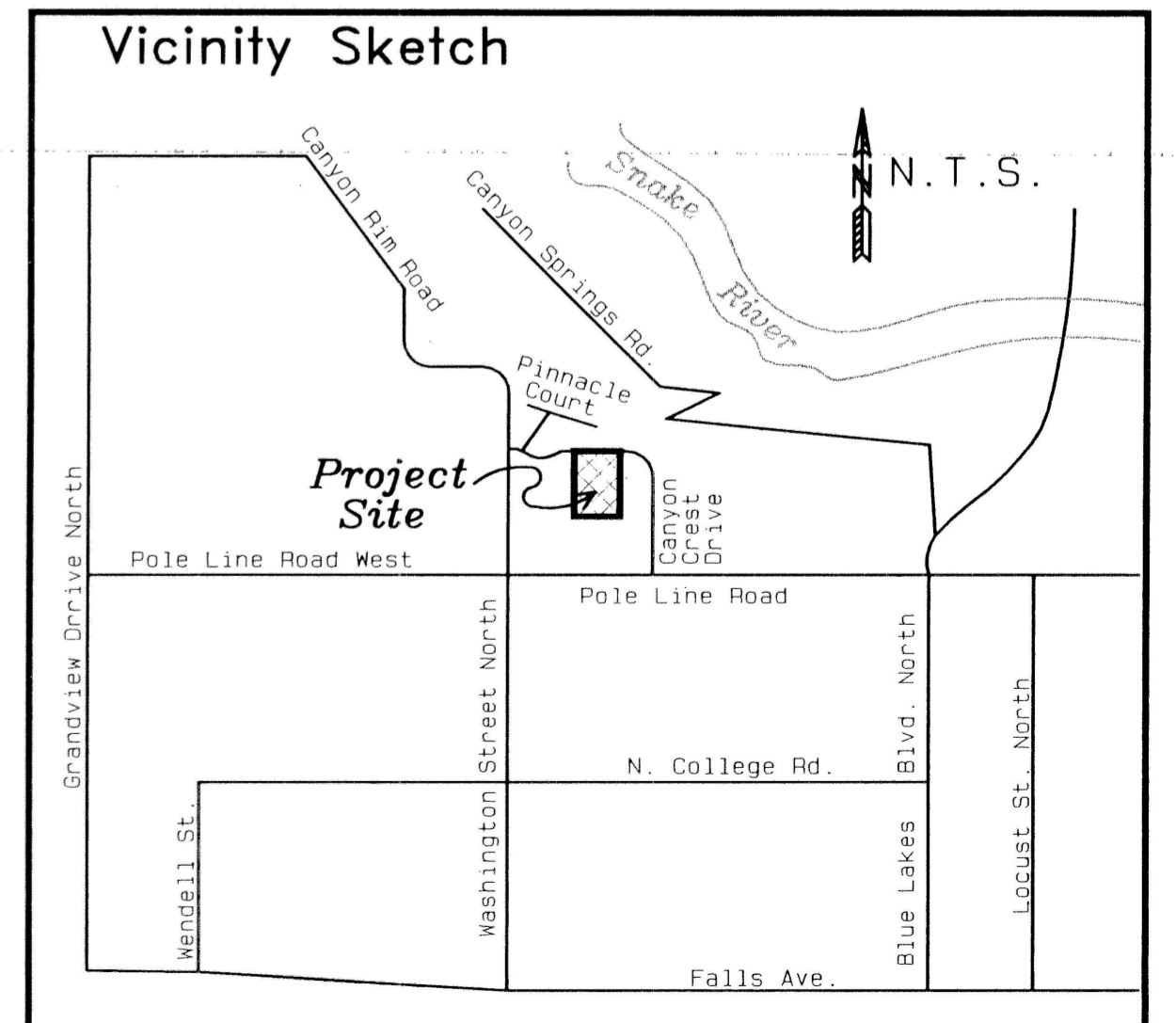
No Monument Found C.P. #909920

Found Copper Weld Rod C.P. #909921



Health Certificate

Sanitary restrictions as required by Idaho Code Title 50, Chapter 13, have been satisfied. Sanitary restrictions may be reimposed, in accordance with Idaho Code Title 50, Chapter 13, Section 50-1326, by the issuance of a certification of disapproval.
Date: Nov. 17, 2003
South Central Dist., Health Dept., EHS



Twin Falls County, Idaho
Recorded for:
RIVERCREST LLC
Nov. 18, 2003
09:32am
2003 - 029829
No. of Pages: 2
KIRSTINA GLASCOCK
County Clerk
Deputy: JH

Ballig Engineering