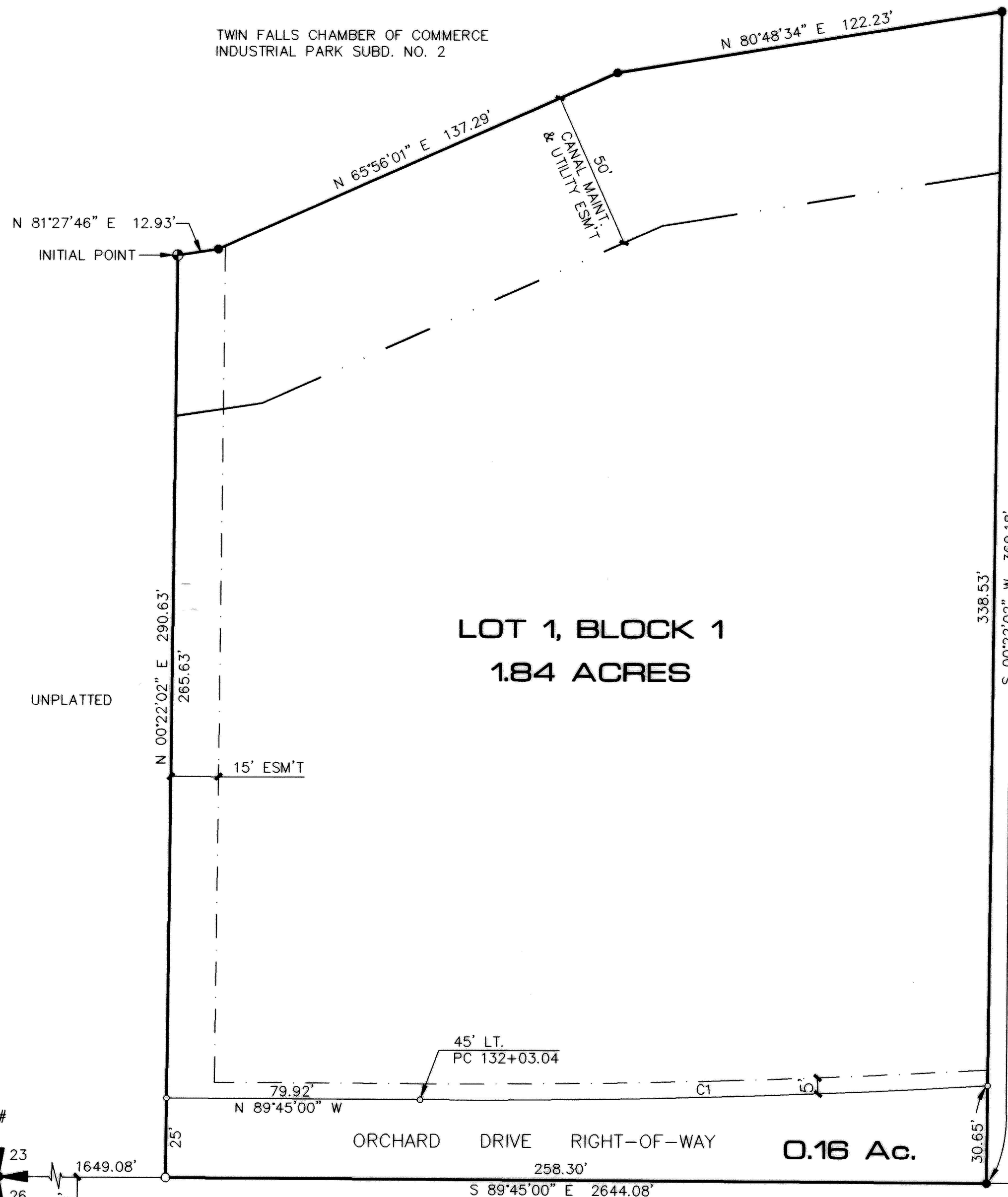


CURVE DATA

CURVE	DELTA	RADIUS	ARC	CHORD	TANGENT	CHORD BRG
1	03°37'38"	2819.79'	178.51'	178.49'	89.29'	N 88°26'11"E

TWIN FALLS CHAMBER OF COMMERCE
INDUSTRIAL PARK SUBD. NO. 2



LOT 1, BLOCK 1
1.84 ACRES

0.16 Ac.

R&D SUBDIVISION
LOCATED IN

SE4SW4, SECTION 23
TOWNSHIP 10 SOUTH
RANGE 17 EAST
BOISE MERIDIAN
TWIN FALLS COUNTY, IDAHO
1994



SCALE
1" = 30'

L E G E N D

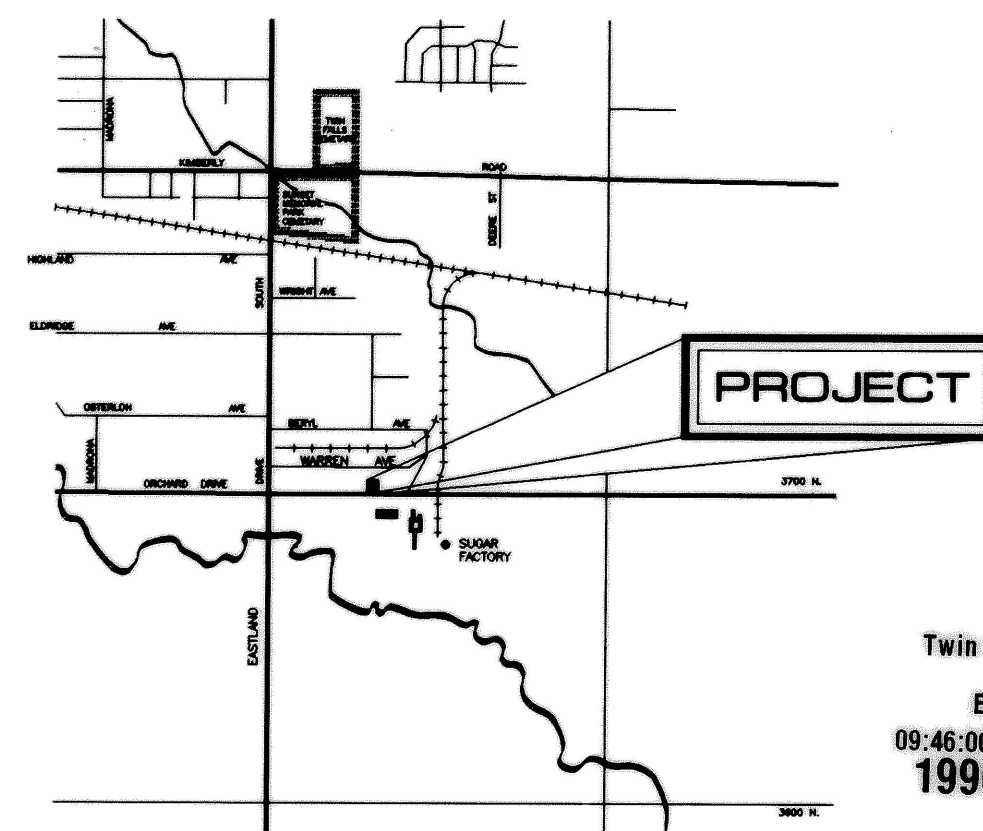
- BOUNDARY LINE
- LOT LINE
- - - - UTILITY & IRRIGATION EASEMENT
- SET BRASS CAP - INITIAL POINT
- FND. 5/8" REBAR
- SET 5/8"x30" REBAR & CAP
- SET 1/2"x24" REBAR & CAP

HEALTH CERTIFICATE

Sanitary restrictions as required by Idaho Code Title 50, Chapter 13, have been satisfied. Sanitary Restrictions may be reimposed, in accordance with Idaho Code Title 50, Chapter 13, Section 50-1326, by the issuance of a Certificate of Disapproval.

[Signature] Date: **Dec 21, 1995**
South Central District Health Dept. EHS

The lot on this plat is eligible to receive water service from the City of Twin Falls Municipal Water System. (I.C. 50-1334)



VICINITY SKETCH NTS

Twin Falls County, Idaho
Recorded for:
EHM ENGINEERS
09:46:00 am Feb. 27, 1996
1996-003184

EHM Engineers, Inc.
ENGINEERS/SURVEYORS/PLANNERS

TWIN FALLS COUNTY, IDAHO
 1996-003184
 1996 FEB 27 A 9:44
 ROBERT S. FORT
 SURVEYOR
 FEE: \$200 DEPUTY CF
 PL. 15 PG. 19