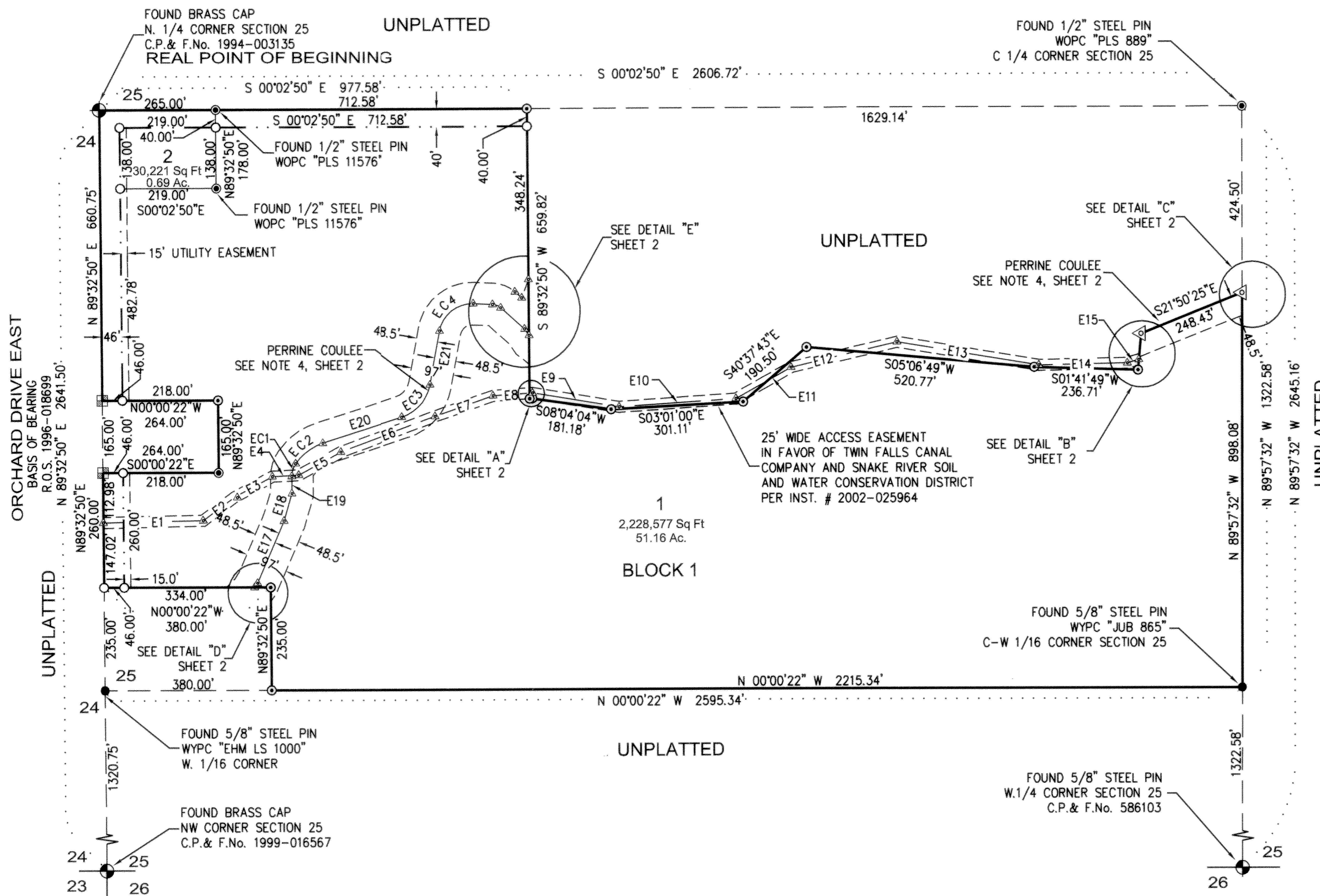
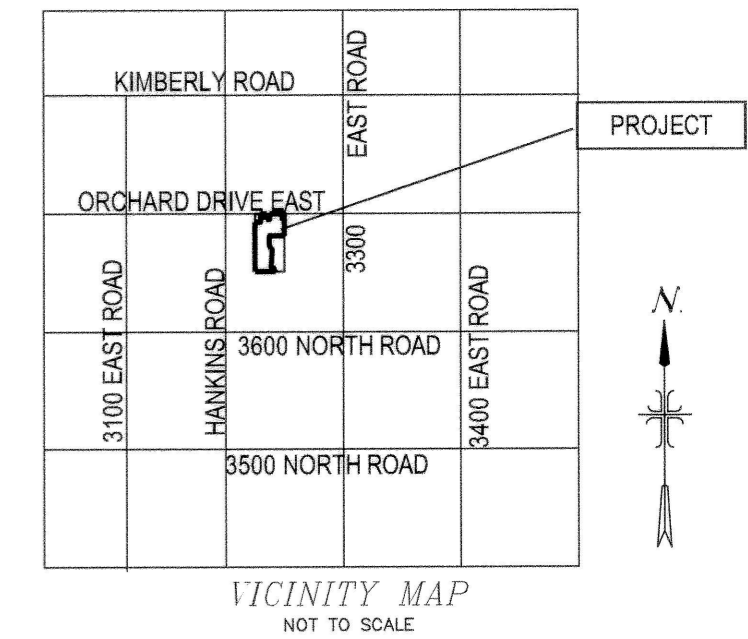
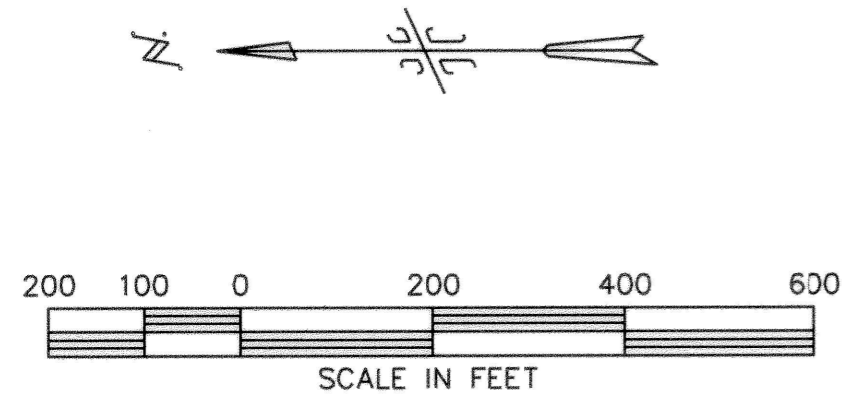


Conveyance Plat
for
Parker's Pond Subdivision
Situated in a Portion of the E. 1/2 of the NW. 1/4 of Section 25,
Township 10 South, Range 17 East, B.M., Twin Falls County, Idaho
2008



Sheet Index

- SHEET 1 - OVERALL VIEW, BOUNDARY AND SECTION BREAKDOWN
- SHEET 2 - DETAILS, DEED REFERENCE TABLE, SURVEY REFERENCE TABLE, EASEMENT LINE TABLE AND NOTES
- SHEET 3 - OWNER'S CERTIFICATE AND ACKNOWLEDGEMENT
- SHEET 4 - CERTIFICATES AND APPROVALS

Legend

- FOUND BRASS CAP
- FOUND 5/8" STEEL PIN WYPC MARKED "HWE 5617" OR AS NOTED
- FOUND 1/2" STEEL PIN
- SET 5/8" STEEL PIN WYPC MARKED "HWE 5617"
- FOUND 1/2" STEEL PIN WYPC MARKED "JUB 865" REPLACED WITH 5/8" STEEL PIN WYPC MARKED "HWE 5617"
- FOUND 1/2" STEEL PIN WOPC MARKED "LS 889" REPLACED WITH 5/8" STEEL PIN WYPC MARKED "HWE 5617"
- △ CALCULATED POINT, NOTHING FOUND OR SET
- 1 LOT NUMBER
- BLOCK 1 BLOCK NUMBER
- WYPC WITH YELLOW PLASTIC CAP
- WOPC WITH ORANGE PLASTIC CAP
- WC WITNESS CORNER
- SUBDIVISION BOUNDARY LINE
- INTERIOR LOT LINE
- DEDICATED RIGHT-OF-WAY LINE
- EASEMENT LINE
- SECTION LINE
- EASEMENT CENTERLINE
- TIE LINE

TWIN FALLS COUNTY
RECORDED FOR:
THE LAND GROUP
10:38:23 am 10-20-2008
2008-022698
NO. PAGES: 4 FEE: \$44.00
ARISTINA GLASCOCK
COUNTY CLERK
DEPUTY: CNICE



Health Certificate

SANITARY RESTRICTIONS AS REQUIRED BY IDAHO CODE, TITLE 50, CHAPTER 13 ARE IN FORCE. NO OWNER SHALL CONSTRUCT ANY BUILDING, DWELLING, OR SHELTER WHICH NECESSITATES THE SUPPLYING OF WATER OR SEWAGE FACILITIES FOR PERSONS USING SUCH PREMISES UNTIL SANITARY RESTRICTION REQUIREMENTS ARE SATISFIED.

[Signature]
REHS, SOUTH CENTRAL PUBLIC HEALTH DISTRICT

Sept 22, 2008
DATE

Developer/ Owner:
DELL PARKER SMITH AND CARLA GILLETTE SMITH
1880 Fillmore Street
Twin Falls, Idaho 83301

THE LAND GROUP, INC.
- Land Surveying
- Civil Engineering
- Site Planning
- Landscape Architecture
- Golf Course Engineering
- Graphic Communication

261 Canyon Crest Drive
Twin Falls, Idaho 83301
Phone (208) 733-4041
Fax (208) 733-4045
www.thelandgroupinc.com