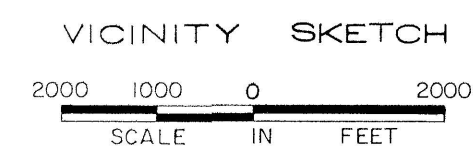
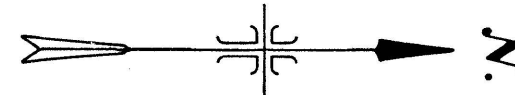
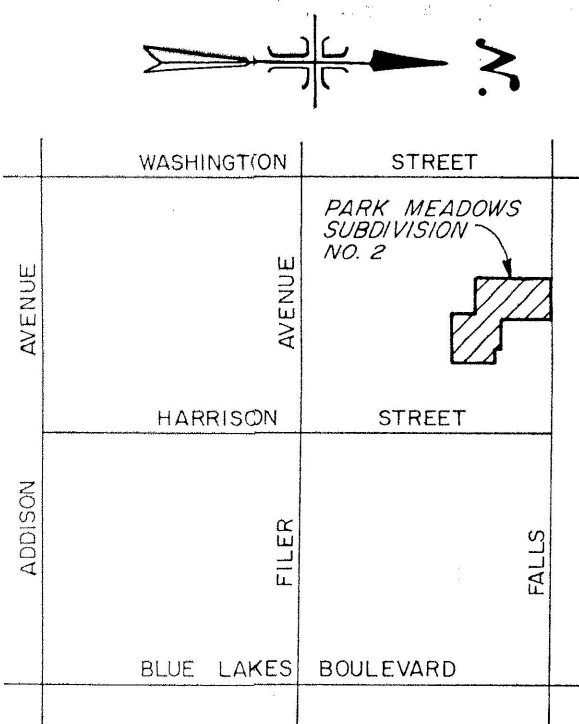


PLAT SHOWING  
 PARK MEADOWS SUBDIVISION NO. 2  
 A SUBDIVISION IN  
 THE N1/2 NW1/4 SECTION 9, T.10S., R.17E., B.M.  
 TWIN FALLS, TWIN FALLS COUNTY, IDAHO  
 1977

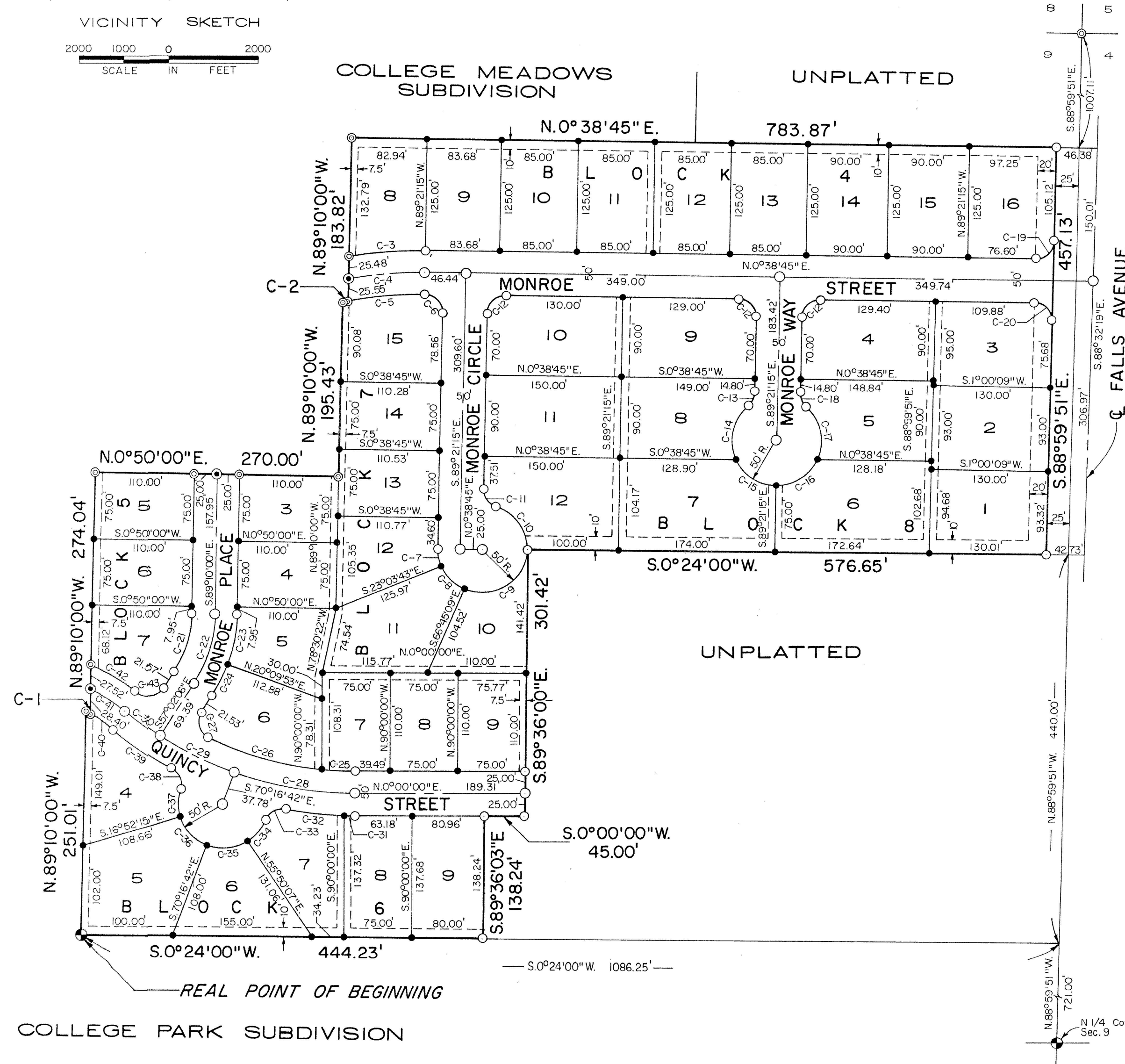


I, \_\_\_\_\_, being first duly sworn, deposes and says: I am a professional engineer, licensed to practice by the State of Idaho. I have compared the above copy with the original and the same is a true and exact copy.

and \_\_\_\_\_ before me this \_\_\_\_\_, 1977.

Public for Idaho My Commission Expires \_\_\_\_\_ at Twin Falls, Idaho \_\_\_\_\_

PARK MEADOWS SUBDIVISION NO. 1



COLLEGE OF SOUTHERN IDAHO

CURVE DATA

CURVES	R	Δ	T	L	CH. L.	CH. BEARING
C-1	175.00	1°52'51"	2.87	5.74	N.30°19'54"E	
C-2	400.00	0°44'02"	2.56	5.12	N.11°46'34"W	
C-3	450.00	10°01'37"	42.05	83.86	N.4°41'34"W	
C-4	425.00	11°19'28"	42.14	84.00	N.5°00'59"W	
C-5	400.00	12°47'20"	44.83	89.28	N.5°44'55"W	
C-6	21.44	90°00'00"	21.44	33.68	N.45°38'45"E	
C-7	50.00	23°42'28"	10.49	20.69	N.78°47'31"E	
C-8	50.00	43°41'28"	20.04	38.13	N.45°09'34"E	
C-9	50.00	112°38'08"	74.37	98.26	N.33°05'12"W	
C-10	50.00	73°23'54"	37.27	64.05	S.53°56'48"W	
C-11	20.00	73°23'54"	14.91	25.62	S.53°56'48"W	
C-12	20.00	90°00'00"	20.00	31.42	S.28.28	
C-13	20.00	49°59'41"	9.33	17.45	S.64°21'24"E	
C-14	50.00	75°33'51"	39.76	65.94	S.77°08'29"E	
C-15	50.00	64°25'51"	31.51	56.23	N.32°51'40"E	
C-16	50.00	64°25'51"	31.51	56.23	N.31°34'10"W	
C-17	50.00	75°33'51"	38.76	65.94	S.78°25'59"W	
C-18	20.00	49°59'41"	9.33	17.45	S.65°38'54"W	
C-19	20.00	89°38'36"	19.88	31.29	N.44°10'33"W	
C-20	20.00	90°21'24"	20.12	31.54	N.45°49'27"E	
C-21	125.00	32°07'54"	36.00	70.10	S.73°06'02"E	
C-22	150.00	32°07'54"	43.20	84.12	S.73°06'02"E	
C-23	175.00	19°01'53"	29.81	59.04	S.79°30'03"E	
C-24	175.00	12°48'01"	19.63	39.10	S.63°26'06"E	
C-25	375.00	5°26'02"	17.80	35.57	N.2°43'01"E	
C-26	375.00	20°14'55"	66.96	132.53	N.16°33'30"E	
C-27	20.00	97°16'57"	22.72	33.96	N.74°40'58"E	
C-28	400.00	19°01'53"	69.53	137.68	N.9°51'39"E	
C-29	400.00	13°14'37"	46.44	92.46	N.26°20'36"E	
C-30	400.00	6°44'13"	23.54	47.03	N.36°20'01"E	
C-31	425.00	1°35'37"	5.91	11.82	N.0°47'38"E	
C-32	425.00	9°04'48"	33.75	67.35	N.6°08'01"E	
C-33	20.00	79°34'30"	16.66	27.78	N.69°06'49"W	
C-34	50.00	34°44'11"	15.64	30.31	N.51°31'59"W	
C-35	50.00	53°53'11"	25.41	47.02	N.7°13'18"W	
C-36	50.00	53°24'28"	25.15	46.61	N.46°25'31"E	
C-37	50.00	35°12'54"	15.87	30.73	S.89°15'48"E	
C-38	20.00	79°34'30"	16.66	27.78	N.69°06'49"W	
C-39	425.00	10°55'58"	40.67	81.10	N.54°14'09"E	
C-40	175.00	10°18'39"	15.79	31.49	N.34°32'48"E	
C-41	200.00	12°33'17"	22.00	43.82	N.33°25'29"E	
C-42	225.00	14°52'25"	29.37	58.41	N.31°28'34"E	
C-43	20.00	95°56'52"	22.19	33.49	N.9°03'40"W	

LEGEND

- Brass Cap Found
- 3/4"x 30" Steel Rebar, Found - Set
- ⊙ 5/8"x 30" Steel Rebar, Found - Set
- 1/2"x 24" Steel Rebar Set
- Public Utilities, Irrigation, and Drainage Easements 15' from exterior property lines and 7.5' from interior property lines, except as shown.

NOTE

1. There is hereby reserved along all lot frontages adjacent to streets, a 5' wide easement for public utilities.

Twin Falls County, Idaho  
 Recorded for:  
 JUB ENG  
 09:00:00 am Jan.01,1978  
 0000 - 728952

J-U-B ENGINEERS, INC.  
 Engineers Planners  
 Twin Falls, Idaho