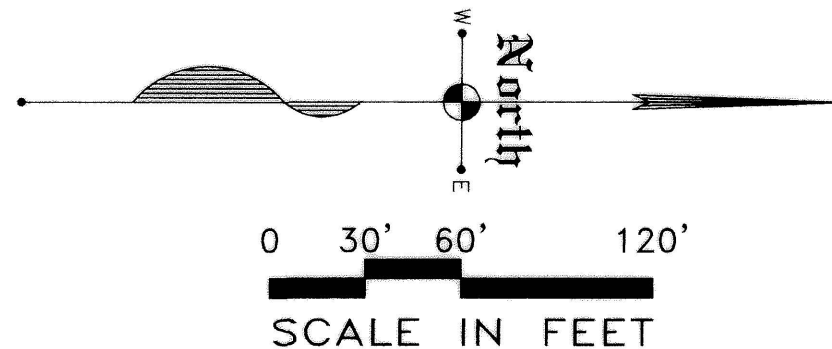
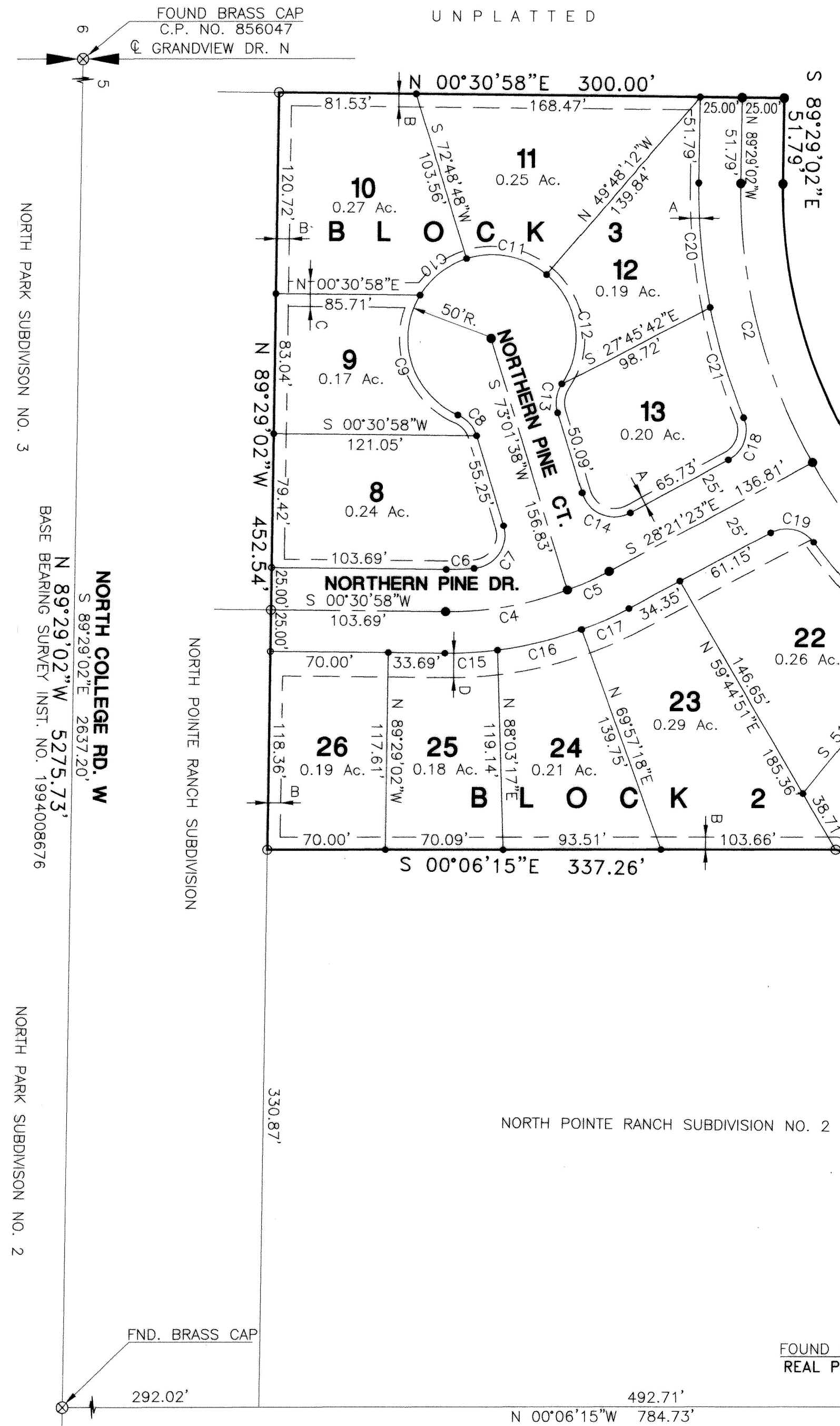


North Pointe Ranch Subdivision Number 3

LOCATED IN
E 1/2 NW 1/4, SECTION 5,
TOWNSHIP 10 SOUTH, RANGE 17 EAST,
BOISE MERIDIAN,
TWIN FALLS COUNTY, IDAHO
1999



CURVE				DATA			
CURVE	DELTA	RADIUS	ARC	CHORD	TANGENT	CHORD BRG	
1	90°37'13"	305.00	482.39	433.66	308.32	N 45°12'21"E	
2	30°17'42"	330.00	174.49	172.46	89.33	N 75°22'07"E	
3	60°19'31"	330.00	347.45	331.62	191.78	N 30°03'30"E	
4	21°10'06"	200.00	73.89	73.47	37.37	N 10°04'05"W	
5	7°42'15"	200.00	26.89	26.87	13.47	N 24°30'15"W	
6	5°30'43"	175.00	16.84	16.83	8.42	S 02°14'24"E	
7	101°58'36"	20.00	35.60	31.08	24.69	S 55°59'03"E	
8	49°59'41"	20.00	17.45	16.90	9.33	S 48°01'48"E	
9	97°59'43"	50.00	85.52	75.47	57.51	N 72°01'49"E	
10	41°06'52"	50.00	35.88	35.11	18.75	S 38°24'54"E	
11	58°03'23"	50.00	50.66	48.52	27.75	S 11°10'13"W	
12	82°49'25"	50.00	72.28	66.15	44.10	S 81°36'37"W	
13	49°59'41"	20.00	17.45	16.90	9.33	N 81°58'31"W	
14	101°23'01"	20.00	35.39	30.95	24.43	S 22°20'08"W	
15	7°59'29"	225.00	31.38	31.36	15.72	N 03°28'46"W	
16	13°03'30"	225.00	51.28	51.17	25.75	N 14°00'16"W	
17	7°49'22"	225.00	30.72	30.70	15.38	N 24°26'42"W	
18	84°22'02"	20.00	29.45	26.86	18.12	N 70°32'24"W	
19	81°50'43"	20.00	28.57	26.20	17.34	S 12°33'58"W	
20	12°06'01"	355.00	74.97	74.83	37.63	N 84°27'57"E	
21	11°08'22"	355.00	69.02	68.91	34.62	N 72°50'46"E	
22	14°39'06"	355.00	90.78	90.53	45.64	N 46°09'47"E	
23	10°30'14"	355.00	65.08	64.99	32.63	N 33°35'07"E	
24	10°30'18"	355.00	65.09	65.00	32.64	N 23°04'51"E	
25	9°48'43"	355.00	60.79	60.72	30.47	N 12°55'21"E	
26	8°07'14"	355.00	50.32	50.27	25.20	N 03°57'22"E	
27	90°37'13"	20.00	31.63	28.44	20.22	S 45°12'21"W	
28	89°22'47"	20.00	31.20	28.13	19.78	S 44°47'39"E	
29	49°59'41"	20.00	17.45	16.90	9.33	N 65°31'07"E	
30	74°41'43"	50.00	65.18	60.66	38.16	S 77°52'08"W	
31	51°04'47"	50.00	44.58	43.11	23.89	N 39°14'37"W	
32	63°35'40"	50.00	55.50	52.69	31.00	N 18°05'36"E	
33	49°59'41"	20.00	17.45	16.90	9.33	S 24°53'36"W	
34	89°22'47"	20.00	31.20	28.13	19.78	N 44°47'39"W	



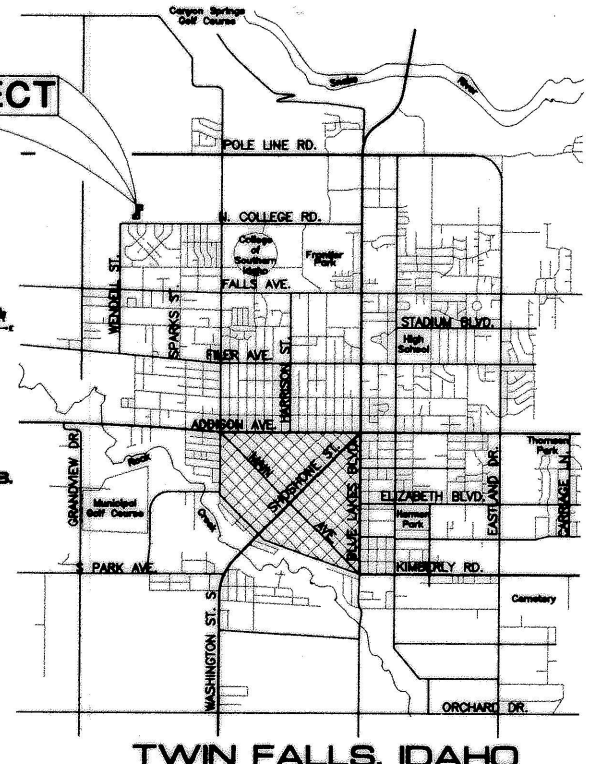
LEGEND

- SUBDIVISION BOUNDARY LINE
- LOT LINE
- ROADWAY CENTER LINE
- EASEMENT LINE
- FOUND BRASS CAP
- SET 5/8" x 30" REBAR & CAP (LS 1000)
- FOUND 5/8" REBAR & CAP (LS 1000)
- SET 1/2" x 24" REBAR & CAP (LS 1000)
- FOUND 1/2" REBAR & CAP (LS 1000)

EASEMENTS

- A 5' WIDE UTILITY EASEMENT
- B 7.5' WIDE UTILITY / DRAINAGE EASEMENT
- C 15' WIDE UTILITY / DRAINAGE EASEMENT
- D 15' WIDE UTILITY / IRRIGATION EASEMENT

HEALTH CERTIFICATE
Sanitary restrictions as required by Idaho Code Title 50, Chapter 13, have been satisfied. Sanitary Restrictions may be reimposed, in accordance with Idaho Code Title 50, Chapter 13, Section 50-1326, by the issuance of a certificate of disapproval.
Date: Oct 29, 1999
South Central District Health Dept., EHS



Twin Falls County, Idaho
Recorded for:
EHM ENGINEERS
09:12:00 am Nov. 05, 1999
1999-019950