

0 25' 50' 100'
SCALE IN FEET

CURVE TABLE						
CURVE	DELTA	RADIUS	ARC	CHORD	TANGENT	CHORD BRG
C1	90°00'00"	20.00	31.42	28.28	20.00	N45°30'58"E
C2	90°00'00"	20.00	31.42	28.28	20.00	S44°29'02"E
C3	90°00'00"	20.00	31.42	28.28	20.00	N45°30'58"E
C4	90°00'00"	20.00	31.42	28.28	20.00	N44°29'02"W
C5	90°00'00"	20.00	31.42	28.28	20.00	S45°30'58"W
C6	90°00'00"	20.00	31.42	28.28	20.00	S44°29'02"E
C7	90°00'00"	20.00	31.42	28.28	20.00	N45°30'58"E

- LEGEND**
- Subdivision Boundary Line
 - Lot Line
 - Roadway Center Line
 - Easement Line
 - Found Brass Cap
 - Set 5/8"x30" Rebar & Cap (LS1000)
 - Set 1/2"x24" Rebar & Cap (LS1000)
 - Found 5/8" Rebar & Cap (LS1000)
 - Found 1/2" Rebar & Cap (LS1000)

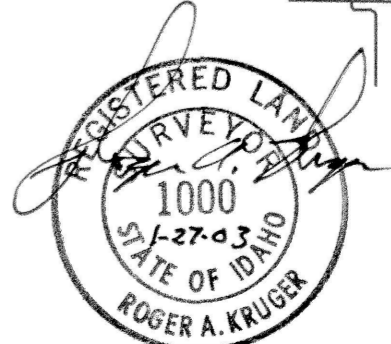
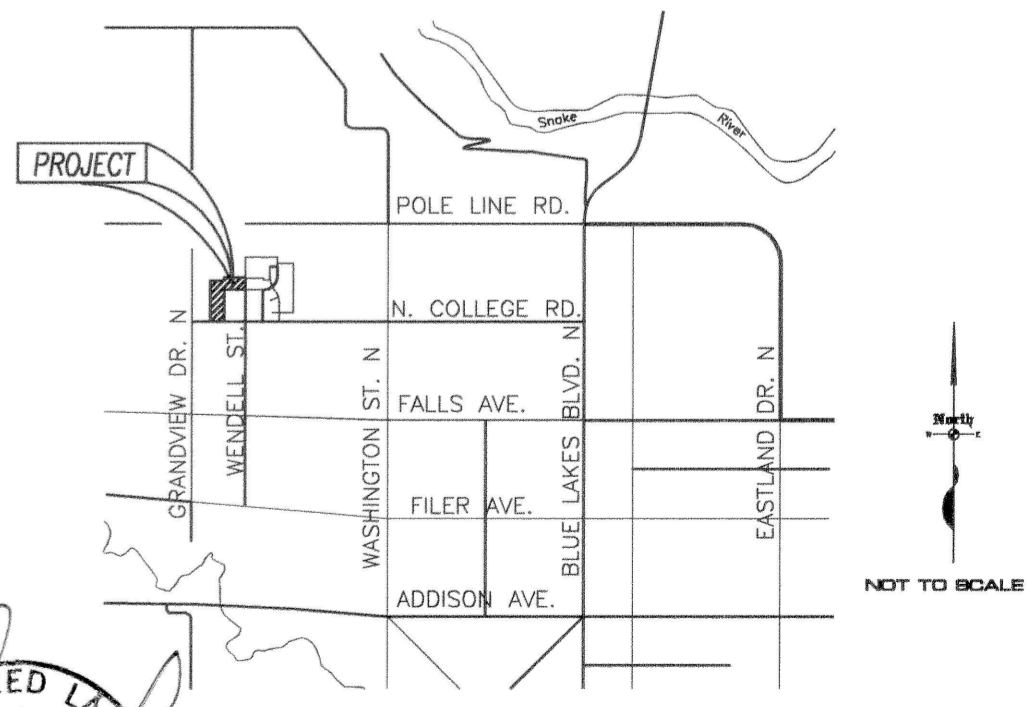
- EASEMENT LEGEND**
- A 7.5' Utility, Drainage, and Irrigation Easement
 - B 10' Utility, Drainage, and Irrigation Easement

HEALTH CERTIFICATE
Sanitary restrictions as required by Idaho Code Title 50, Chapter 13, have been satisfied. Sanitary Restrictions may be reimposed, in accordance with Idaho Code Title 50, Chapter 13, Section 50-1326, by the Issuance of a Certificate of Disapproval.
Date: Jan 21, 2003 219
South Central District Health Dept., EHS

North Pointe Ranch
Subdivision No. 7

Twin Falls County, Idaho
Recorded for:
EHM ENGINEERS
10:41am Feb. 13, 2003
2003-004036
No. of Pages: 2 Fee: \$22.00
ROBERT S. FORT
Ex-Officio Recorder
Deputy: SL

LOCATED IN
A PORTION OF
SW 1/4 NW 1/4, SECTION 5,
TOWNSHIP 10 SOUTH, RANGE 17 EAST,
BOISE MERIDIAN,
TWIN FALLS, COUNTY,
IDAHO
2003



EHM Engineers, Inc.
ENGINEERS/SURVEYORS/PLANNERS