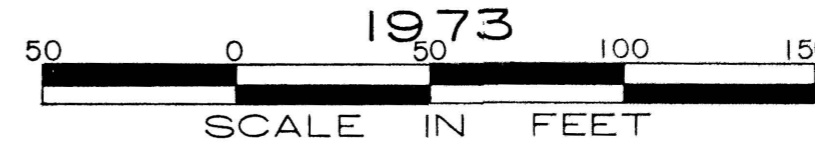


Surveyed by J. U. Brown
25-714, 6-4-73

PLAT SHOWING
NORTH BY NORTHEAST SUBDIVISION
A PORTION OF
NW 1/4 NW 1/4, SECTION 11, T. 10S., R. 17E., B.M.
TWIN FALLS, TWIN FALLS COUNTY, IDAHO



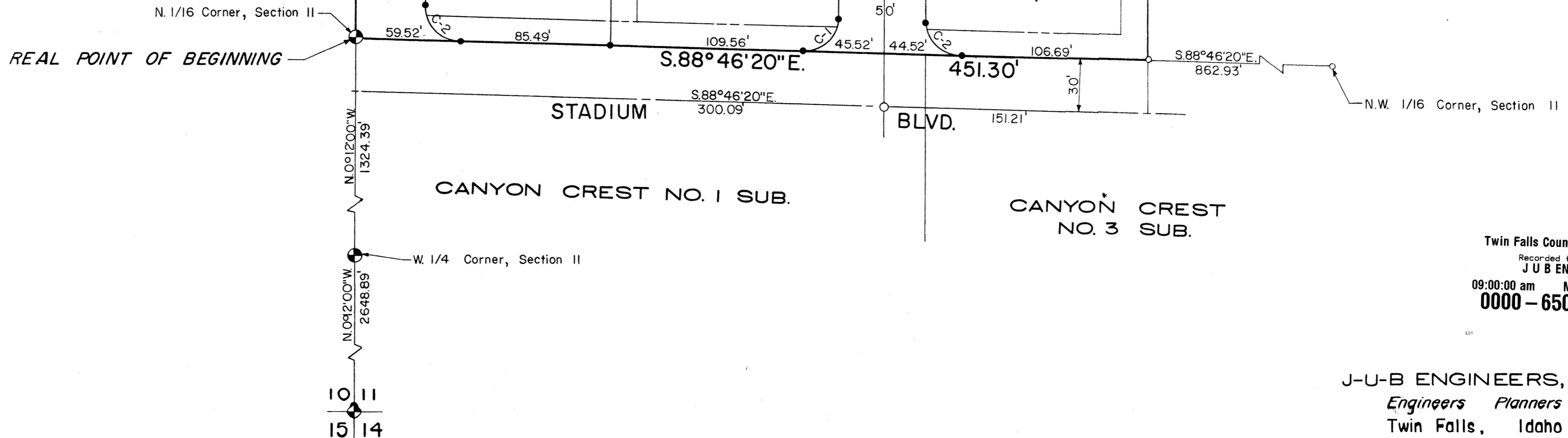
CURVE DATA						
CURVE	R	Δ	T	L	CH. L.	CH. BEARING
C-1	20.00'	91°25'40"	20.50'	31.91'	28.63'	N.45°30'50"E.
C-2	20.00'	88°34'20"	19.51'	30.92'	27.93'	N.44°29'10"W.
C-3	20.00'	49°59'41"	9.33'	17.45'	16.90'	S.25°11'50"E.
C-4	20.00'	49°59'41"	9.33'	17.45'	16.90'	N.24°47'50"E.
C-5	50.00'	25°00'23"	11.09'	21.82'	21.65'	S.37°17'29"W.
C-6	50.00'	56°54'46"	27.10'	49.67'	47.65'	N.3°40'05"W.
C-7	50.00'	51°06'59"	23.91'	44.61'	43.14'	S.57°40'58"E.
C-8	50.00'	54°18'24"	25.65'	47.39'	45.64'	S.69°36'21"W.
C-9	50.00'	52°44'55"	24.79'	46.03'	44.42'	S.16°04'42"W.
C-10	50.00'	39°53'55"	18.15'	34.82'	34.12'	S.30°14'43"E.

LEGEND

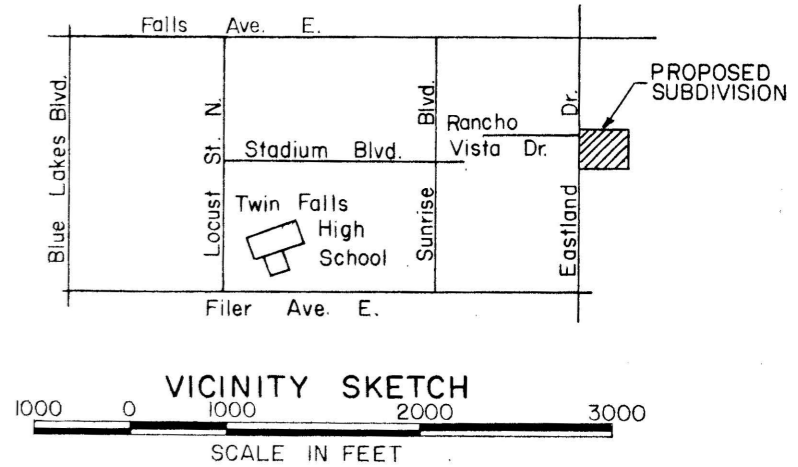
- 3/4" x 30" Iron Pin
- ⊙ Brass Cap
- 5/8" x 30" Iron Pin
- 1/2" x 24" Iron Pin
- ==== Public Utilities, Irrigation, Sidewalk, And Drainage Easements 15' from Property Line Where Not Dimensioned.

NOTES

1. The land shown on this plat is devoid of any water rights from the Twin Falls Canal Company and the City of Twin Falls.
2. There is hereby reserved along all lot frontages, adjacent to streets, a 5' wide Easement for Public Utilities.



DEVOE BROWN PROPERTY UNDEVELOPED



Twin Falls County, Idaho
 Recorded for:
J U B ENG
 09:00:00 am May 01, 1973
0000 - 650365

J-U-B ENGINEERS, INC.
Engineers Planners
 Twin Falls, Idaho