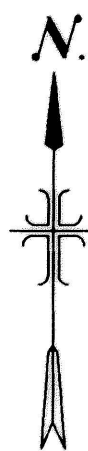


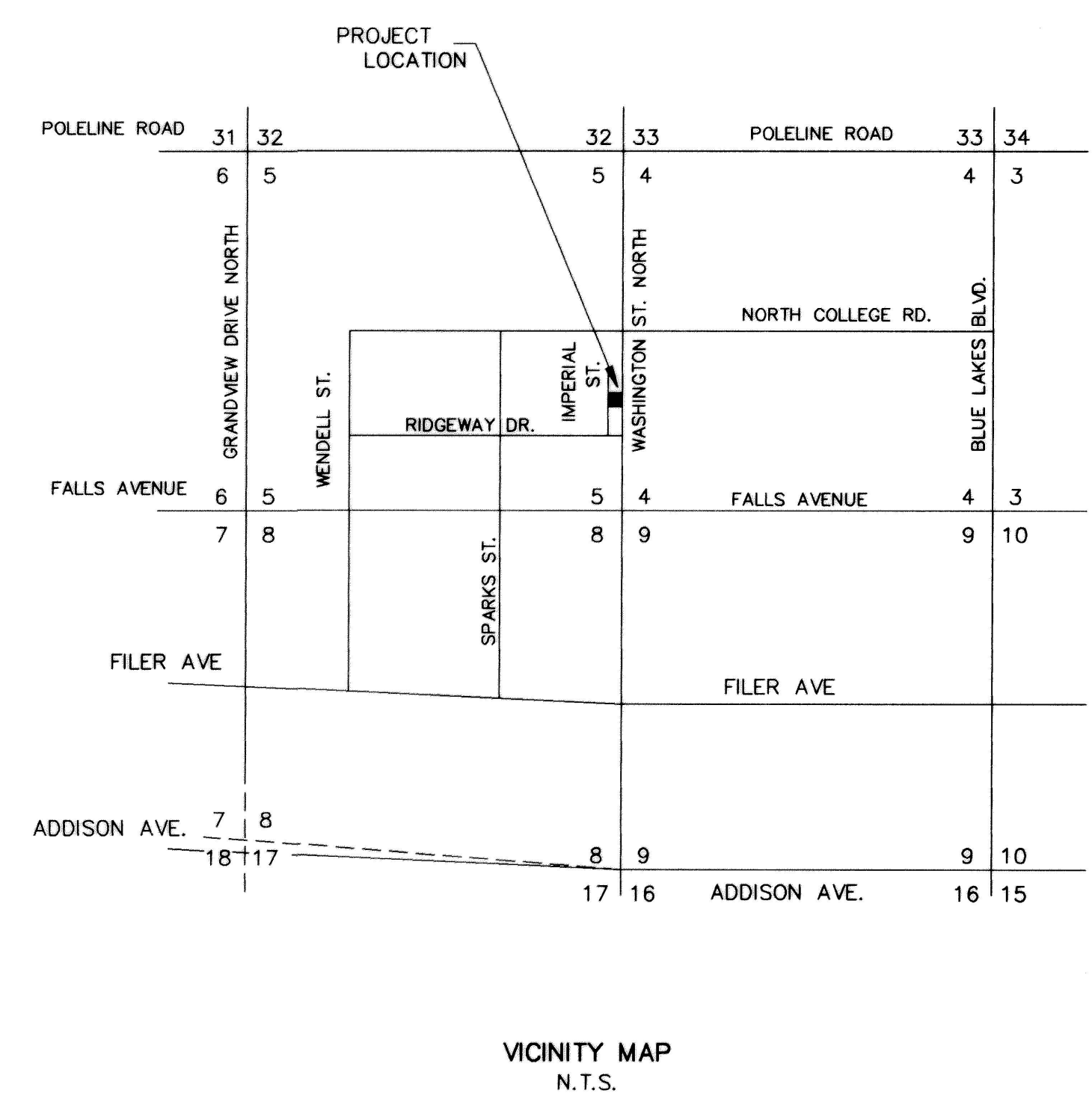
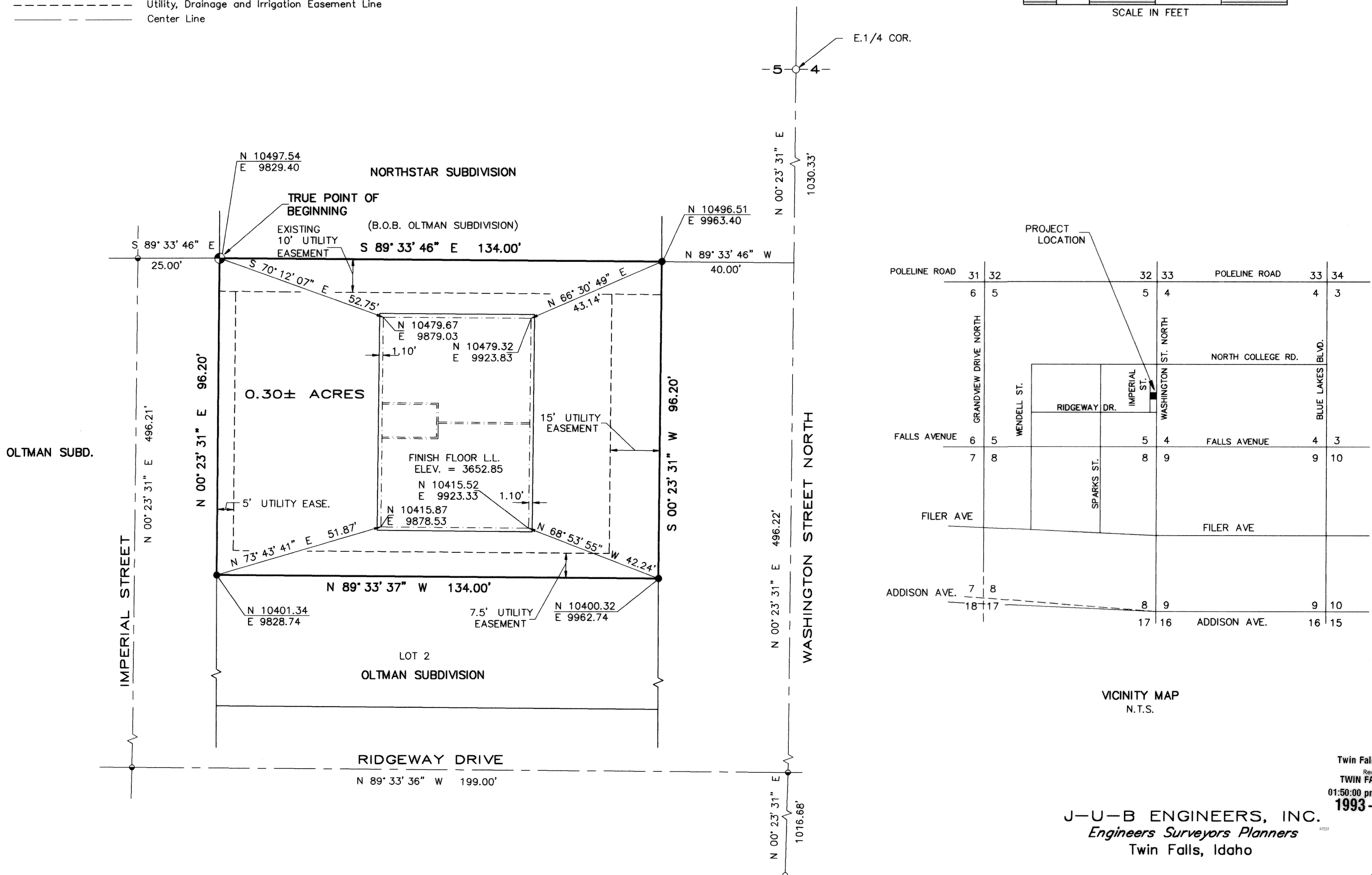
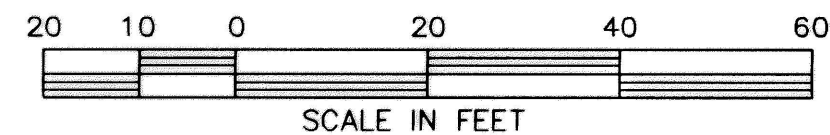
# PLAT SHOWING McCRACKEN CONDOMINIUM SUBDIVISION

LOT 1, BLOCK 1, OLTMAN SUBDIVISION  
SE 1/4, SECTION 5, TOWNSHIP 10 NORTH, RANGE 17 EAST,  
BOISE MERIDIAN  
TWIN FALLS COUNTY, IDAHO  
1993



## LEGEND

- Found Brass Cap Monument
- 5/8" X 30" Iron Pin with Plastic Cap Set
- 5/8" Pin w/Cap Found
- 1/2" Pin Found
- PK Nail Found
- Boundary Line
- Building
- Interior Wall
- Utility, Drainage and Irrigation Easement Line
- Center Line



Twin Falls County, Idaho  
Recorded For:  
TWIN FALLS, CITY OF  
01:50:00 pm Mar. 10, 1993  
**1993-003281**

**J-U-B ENGINEERS, INC.**  
*Engineers Surveyors Planners*  
Twin Falls, Idaho