

# Health Certificate

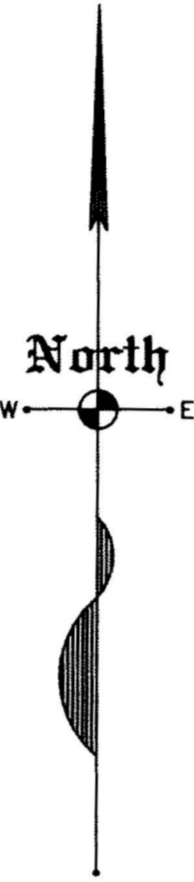
Sanitary restrictions as required by Idaho Code, Title 50, Chapter 13 have been satisfied based on the DEQ approval of the design plans and specifications and the conditions imposed on the developer for continued satisfaction of the sanitary restrictions. Buyer is cautioned at the time of this approval, no drinking water or sewer/septic facilities were constructed. Building construction can be allowed with appropriate building permits if drinking water or sewer facilities have since been constructed or if the developer is simultaneously constructing those facilities. If the developer fails to construct facilities or meet other conditions of DEQ, then sanitary restrictions may be reimposed, in accordance with Section 50-1326, Idaho Code, by the issuance of a certificate of disapproval, and no construction of any building or shelter requiring drinking water or sewer/septic facilities shall be allowed.

REHS, South Central Public Health District  
Date: 4/10/09

## Notes:

- Private driveway access to Filer Ave East, Hankins Road North and Meadowview Lane North is prohibited.
- No buildings, fences, trees, or other improvements shall be constructed or placed upon, over or across water, sewer, or pressure irrigation easements. The City of Twin Falls is not responsible for replacing any improvements in, under or over the easements caused by maintenance or repair.
- The City of Twin Falls is not responsible for replacement costs incurred while accessing/maintaining the sewer line on Lots 8, 9, 10, 11 and 12, Block 3.

0 50' 100' 200'  
SCALE IN FEET



# Morning Sun Subdivision Number 7

Located In  
SE 1/4 NE 1/4, Section 11  
Township 10 South, Range 17 East  
Boise Meridian  
Twin Falls County, Idaho  
2009

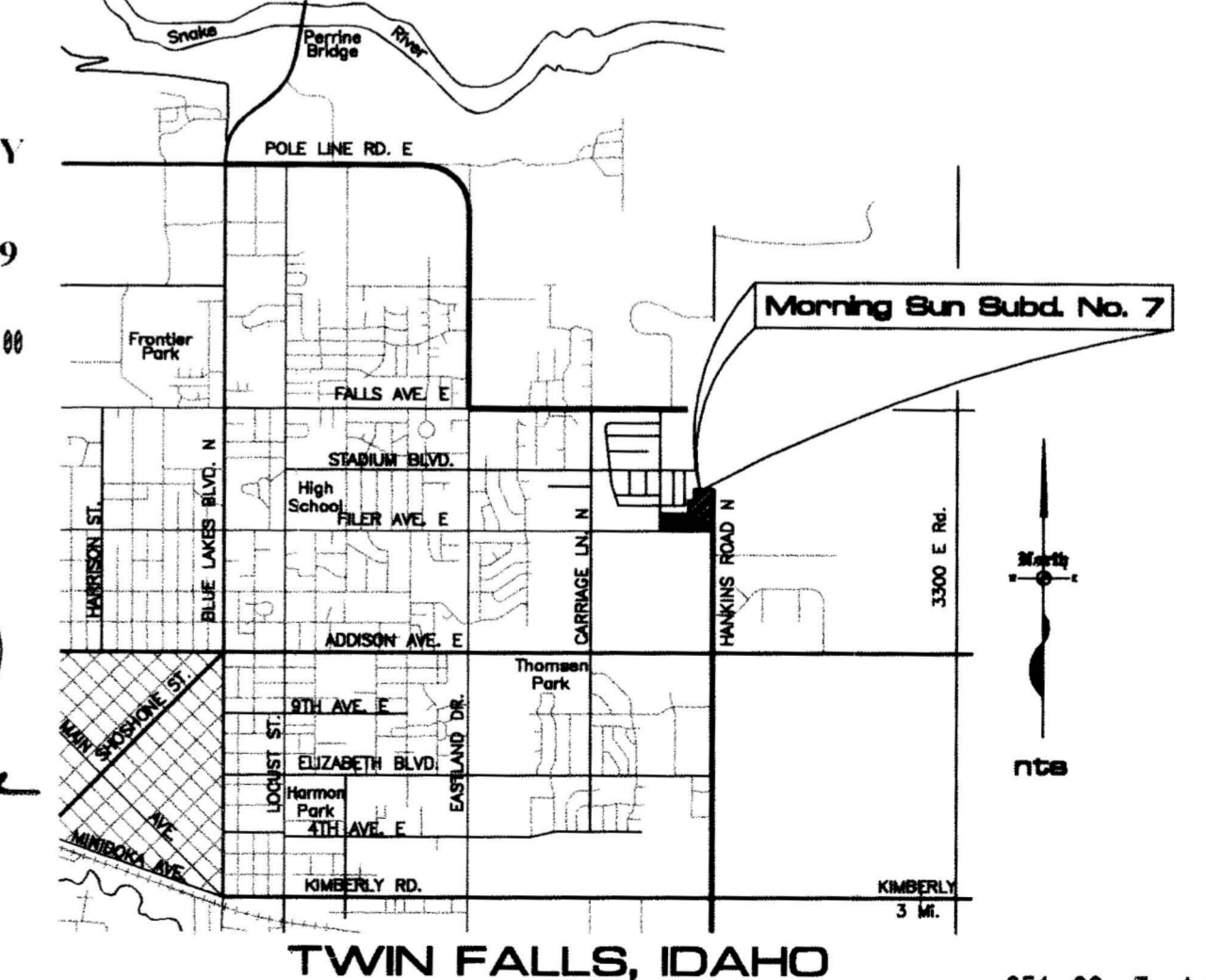
CURVE TABLE						
CURVE	DELTA	LENGTH	RADIUS	TANGENT	CHORD	CHORD BRG
C1	6°15'24"	51.87	475.00	25.96	51.84	N88°05'37"E
C2	6°15'24"	60.06	550.00	30.06	60.03	N88°05'37"E
C2A	5°49'04"	55.85	550.00	27.95	55.82	N87°52'27"E
C2B	0°26'20"	4.21	550.00	2.11	4.21	S88°59'51"E
C3	91°06'35"	31.80	20.00	20.39	28.56	S45°40'23"W
C4	88°53'25"	31.03	20.00	19.62	28.01	S44°19'37"E
C5	90°00'00"	31.42	20.00	20.00	28.28	N43°46'20"W
C6	49°59'41"	17.45	20.00	9.33	16.90	N66°13'50"E
C7	33°28'12"	29.21	50.00	15.03	28.79	S57°58'05"W
C8	65°19'47"	57.01	50.00	32.06	53.97	N72°37'56"W
C9	79°30'41"	69.39	50.00	41.59	63.95	N00°12'42"W
C10	11°40'43"	10.19	50.00	5.11	10.17	N45°23'00"E
C11	49°59'41"	17.45	20.00	9.33	16.90	S26°13'31"W
C12	90°00'00"	31.42	20.00	20.00	28.28	N46°13'40"E
C13	49°59'41"	17.45	20.00	9.33	16.90	S23°46'10"E
C14	74°49'46"	65.30	50.00	38.25	60.76	N11°21'08"W
C15	62°01'57"	54.13	50.00	30.06	51.53	N57°04'43"E
C16	53°07'40"	46.36	50.00	25.00	44.72	S65°20'29"E
C17	49°59'41"	17.45	20.00	9.33	16.90	N63°46'29"W
C18	91°06'35"	31.80	20.00	20.39	28.56	S45°40'23"W
C19	88°53'25"	31.03	20.00	19.62	28.01	S44°19'37"E
C20	88°53'46"	31.03	20.00	19.62	28.01	S44°19'48"E
C21	4°15'24"	32.61	439.00	16.31	32.61	N87°05'38"E
C22	85°20'12"	29.79	20.00	18.43	27.11	S43°53'46"W
C23	90°00'21"	31.42	20.00	20.00	28.29	S43°46'30"E
C24	90°58'43"	31.76	20.00	20.34	28.52	N45°43'57"E
C25	90°00'00"	31.42	20.00	20.00	28.28	N43°46'20"W
C26	90°00'00"	31.42	20.00	20.00	28.28	N46°13'40"E
C27	89°00'56"	31.07	20.00	19.66	28.04	N44°15'52"W
C28	90°59'04"	31.76	20.00	20.35	28.53	N45°44'08"E
C29	89°00'56"	31.07	20.00	19.66	28.04	N44°15'52"W
C30	89°00'56"	31.07	20.00	19.66	28.04	S44°15'52"E
C31	01°59'59"	15.32	439.00	7.66	15.32	N89°46'41"W
C32	01°35'57"	16.35	586.00	8.18	16.35	S85°45'54"W

## Easement Legend

- A 15' Utility, Drainage, and Irrigation Easement
- B 10' Pressure Irrigation Easement
- C 7.5' Pressure Irrigation Easement

## Legend

- Subdivision Boundary Line
- Lot Line
- Roadway Centerline
- Easement Line (See Easement Legend)
- Set 5/8"x24" Rebar and Cap (LS 1000)
- Fnd. 5/8" Rebar and Cap (LS 1000)
- Set 1/2"x24" Rebar and Cap (LS 1000)
- Fnd. Monument as Noted



TWIN FALLS COUNTY  
RECORDED FOR:  
EHM ENGINEERS  
2:13:49 pm 04-16-2009  
2009-008366  
NO. PAGES: 2 FEE: \$22.00  
KRISTINA GLASCOCK  
COUNTY CLERK  
DEPUTY: CNICE

FOUND 5/8" REBAR  
CP #2008-025007



**EHM** Engineers, Inc.  
ENGINEERS/SURVEYORS/PLANNERS