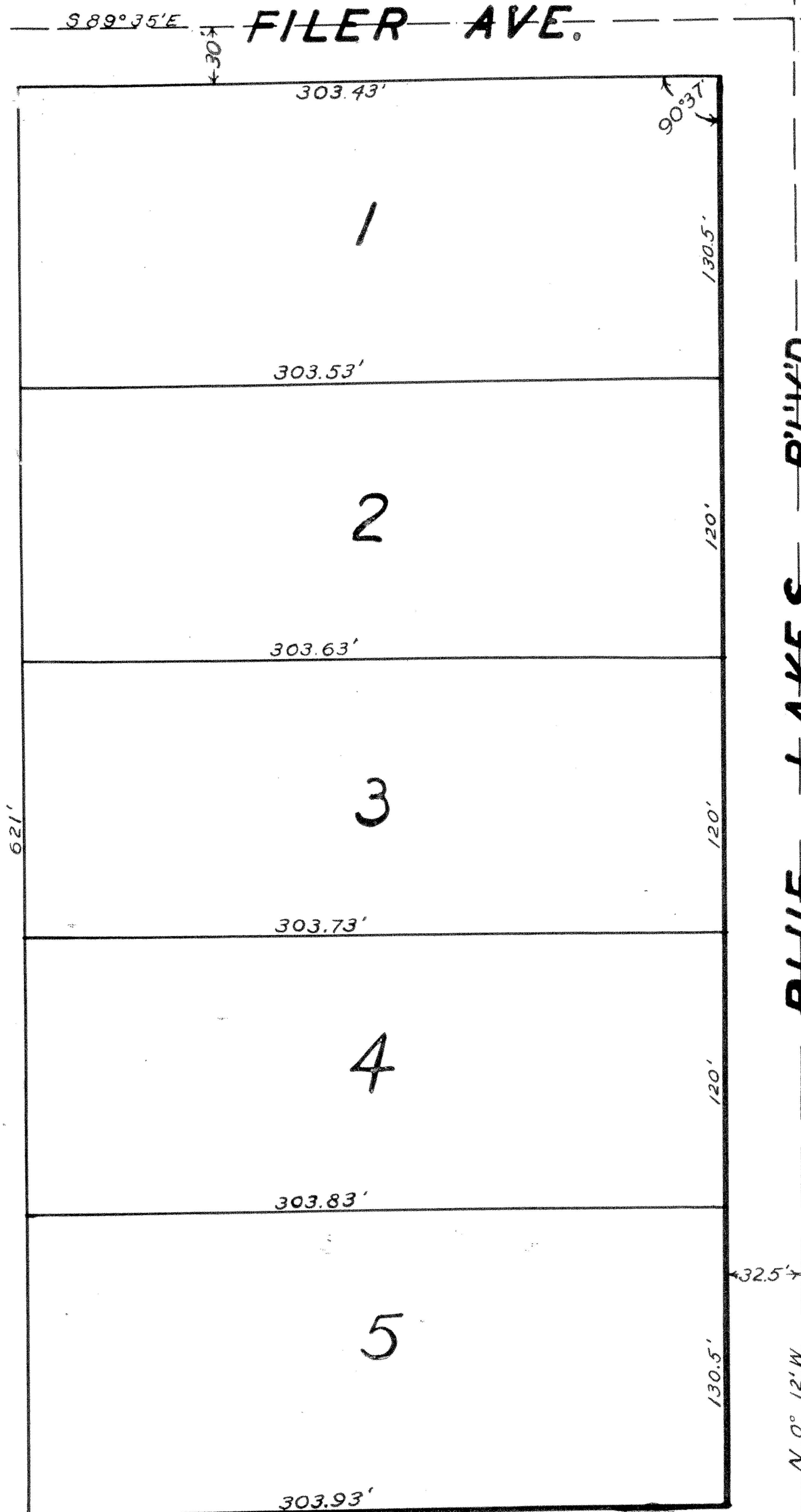


# LINDA-EILENE SUBDIVISION

OF LOTS 4, 5, 6, 7, 8, 9 & 10 "GARDEN  
HOMES SUBDIVISION" IN NE<sup>4</sup> NE<sup>4</sup>

SE<sup>4</sup> SEC. 9, T.10S., R.17E., B.M.

1"=60'



STATE OF IDAHO SS.  
COUNTY OF TWIN FALLS

KNOW ALL MEN BY THESE PRESENTS; THAT WE THE UNDERSIGNED DO HEREBY CERTIFY THAT THE FOLLOWING IS A TRUE AND CORRECT DESCRIPTION OF THE LAND INCLUDED IN THE "LINDA-EILENE SUBDIVISION" OF LOTS 4, 5, 6, 7, 8, 9 & 10, OF THE GARDEN HOMES SUBDIVISION IN THE NE<sup>4</sup> NE<sup>4</sup> SE<sup>4</sup> SEC. 9, T.10S., R.17E., B.M. AND WE DO FURTHER CERTIFY THAT IT IS OUR INTENTION TO INCLUDE THE SAME IN SAID PLAT AND, WE DO FURTHER HEREBY DECLARE THAT IN CONSIDERATION OF THE FILING OF SAID PLAT BY THE RECORDER OF TWIN FALLS COUNTY, IDAHO AND, THE ACCEPTANCE BY THE PUBLIC OF THE STREETS AND ALLEY SHOWN THEREUPON, WE DO FURTHER GIVE AND GRANT TO THE PUBLIC FOREVER, IN FEE SIMPLE, SUCH PORTIONS OF THE PREMISIS PLATTED AS ARE ON SAID PLAT SET APART FOR STREETS AND ALLEYS FOR PUBLIC USE FOREVER.

SUBSCRIBED AND SWORN TO BEFORE  
THIS 26 DAY OF February 1947.

*Ed McCoy*  
NOTARY PUBLIC

*Kenneth J. Kelly*  
*Phyllis M. Self*  
*E. V. McRoberts*  
*Betty W. McRoberts*

STATE OF IDAHO SS.  
COUNTY OF TWIN FALLS

I HEREBY CERTIFY THAT WE PREPARED THE PLAT OF THE LINDA-EILENE SUBDIVISION OF LOTS 4, 5, 6, 7, 8, 9 & 10 OF THE GARDEN HOMES SUBDIVISION IN THE NE<sup>4</sup> NE<sup>4</sup> SE<sup>4</sup> SEC. 9, T.10S., R.17E., B.M. AND THAT THE SEVERAL LOTS ARE STAKED TO CONFORM THEREWITH.

SUBSCRIBED AND SWORN TO BEFORE ME  
THIS 26 DAY OF Feb. 1947.

*Ed McCoy*  
NOTARY PUBLIC

THE TWIN FALLS  
ENGINEERING CO.

APPROVED AND ACCEPTED BY THE MAYOR AND COUNCIL OF THE CITY  
OF TWIN FALLS IDAHO THIS \_\_\_ DAY OF \_\_\_ 1947.

STATE OF IDAHO SS.  
COUNTY OF TWIN FALLS

I HEREBY CERTIFY THAT THIS INSTRUMENT WAS FILED FOR RECORD AT THE REQUEST OF *E. V. McRoberts* AT 10<sup>15</sup> O'CLOCK, THIS 20 DAY OF *March* 1947. IN MY OFFICE AND DULY RECORDED IN BOOK 5 OF PLATS NO. 58.

*Al Bell*  
EX OFFICIO RECORDER

DEPUTY

#  
369565