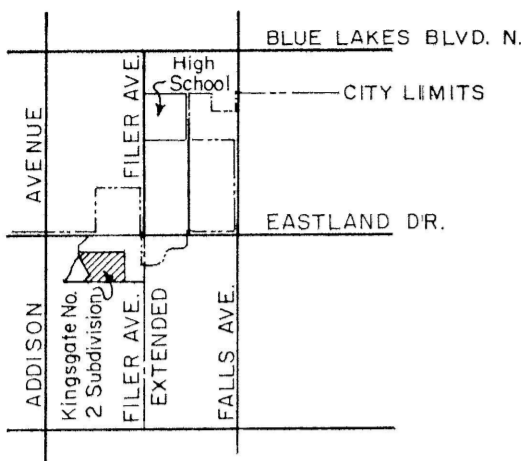
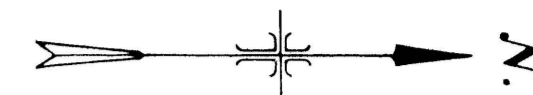
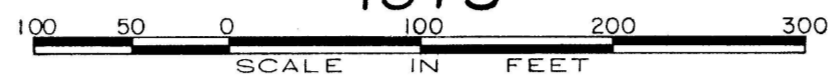


# PLAT SHOWING KINGSGATE NO. 2 SUBDIVISION

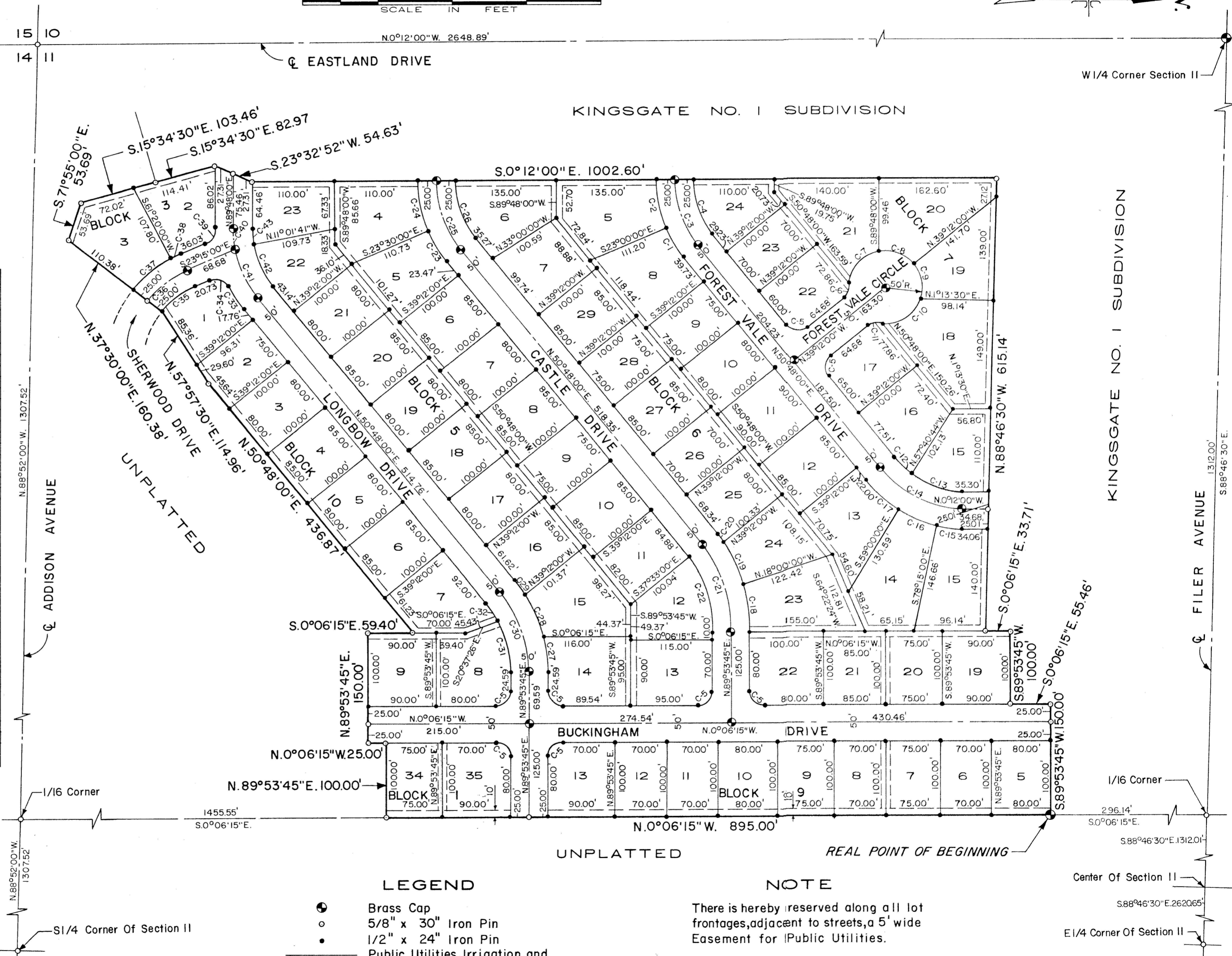
A PORTION OF THE W1/2 SW1/4, SECTION II, T.10S., R.17E., B.M.  
TWIN FALLS COUNTY, IDAHO

1973



VICINITY SKETCH  
NOT TO SCALE

CURVE	R	Δ	T	LENGTH	CH. L.	CH. BEARING
C-1	170.89	16°12'00"	24.32	48.32	48.16	N58°54'00"E.
C-2	170.89	22°48'00"	34.46	68.00	67.55	N78°24'00"E.
C-3	145.89	39°00'00"	51.66	99.30	97.40	N70°18'00"E.
C-4	120.89	39°00'00"	42.81	82.28	80.71	N70°18'00"E.
C-5	20.00	90°00'00"	20.00	31.42	28.28	
C-6	20.00	49°59'41"	9.33	17.45	16.90	N.64°11'51"W.
C-7	50.00	73°59'27"	37.67	64.57	60.18	N.52°11'58"W.
C-8	50.00	66°00'14"	32.47	57.60	54.47	N.17°47'53"E.
C-9	50.00	57°30'45"	27.44	50.19	48.11	N.79°33'23"E.
C-10	50.00	82°28'56"	43.84	71.98	65.92	S.30°26'47"E.
C-11	20.00	49°59'41"	9.33	17.45	16.90	S.14°12'10"E.
C-12	120.00	13°08'00"	13.81	27.51	27.45	N.44°14'00"E.
C-13	120.00	37°52'00"	41.16	79.31	77.87	N.18°44'00"E.
C-14	145.00	51°00'00"	69.16	129.07	124.85	N.25°18'00"E.
C-15	170.00	11°57'00"	17.79	35.46	35.39	N.5°46'30"E.
C-16	170.00	19°15'00"	28.83	57.12	56.85	N.21°22'30"E.
C-17	170.00	19°48'00"	29.67	58.75	58.46	N.40°54'00"E.
C-18	208.88	17°53'45"	32.89	65.24	64.98	S.80°56'53"W.
C-19	208.88	18°00'00"	33.08	65.62	65.35	S.63°00'00"W.
C-20	208.88	3°12'00"	5.83	11.67	11.66	S.52°24'00"W.
C-21	183.88	39°05'45"	65.29	125.47	123.05	S.70°20'53"W.
C-22	158.88	39°05'45"	56.41	108.41	106.32	S.70°20'53"W.
C-23	176.78	15°42'00"	24.37	48.44	48.29	S.58°39'00"W.
C-24	176.78	23°18'00"	36.45	71.89	71.40	S.78°09'00"W.
C-25	151.78	39°00'00"	53.75	103.31	101.33	S.70°18'00"W.
C-26	126.78	39°00'00"	44.90	86.30	84.64	S.70°18'00"W.
C-27	200.00	14°35'57"	25.62	50.96	50.82	S.82°35'47"W.
C-28	200.00	17°47'05"	31.29	62.08	61.83	S.66°24'16"W.
C-29	200.00	6°42'43"	11.73	23.43	23.42	S.54°09'22"W.
C-30	175.00	39°05'45"	62.14	119.41	117.11	S.70°20'53"W.
C-31	150.00	28°23'45"	37.95	74.34	73.58	S.75°41'53"W.
C-32	150.00	10°42'00"	14.05	28.01	27.97	S.56°09'00"W.
C-33	175.00	12°03'19"	18.48	36.82	36.75	S.56°49'40"W.
C-34	20.00	86°06'19"	18.68	30.06	27.31	S.19°48'10"W.
C-35	110.00	29°15'00"	28.70	56.16	55.55	S.37°52'30"E.
C-36	135.00	29°15'00"	35.23	68.92	68.17	S.37°52'30"E.
C-37	160.00	23°50'00"	33.77	66.56	66.08	S.40°35'00"E.
C-38	160.00	5°25'00"	7.57	15.13	15.12	S.25°57'30"E.
C-39	20.00	66°57'00"	13.23	23.37	22.06	S.56°43'30"E.
C-40	150.00	10°49'41"	14.22	28.35	28.31	S.84°23'10"W.
C-41	150.00	28°10'19"	37.64	73.75	73.01	S.64°53'10"W.
C-42	125.00	28°10'19"	31.37	61.46	60.84	S.64°53'10"W.
C-43	125.00	10°49'41"	11.85	23.62	23.59	S.84°23'10"W.



**LEGEND**

- Brass Cap
- 5/8" x 30" Iron Pin
- 1/2" x 24" Iron Pin
- Public Utilities, Irrigation, and Drainage Easements, 7.5' from Property Line where not Dimensioned.

**NOTE**

There is hereby reserved along all lot frontages, adjacent to streets, a 5' wide Easement for Public Utilities.

Twin Falls County, Idaho  
Recorded for:  
JUB ENG  
00:00:00 am May 31, 1973  
0000 - 650367

**J-U-B ENGINEERS, INC.**  
Engineers Planners  
Twin Falls, Idaho