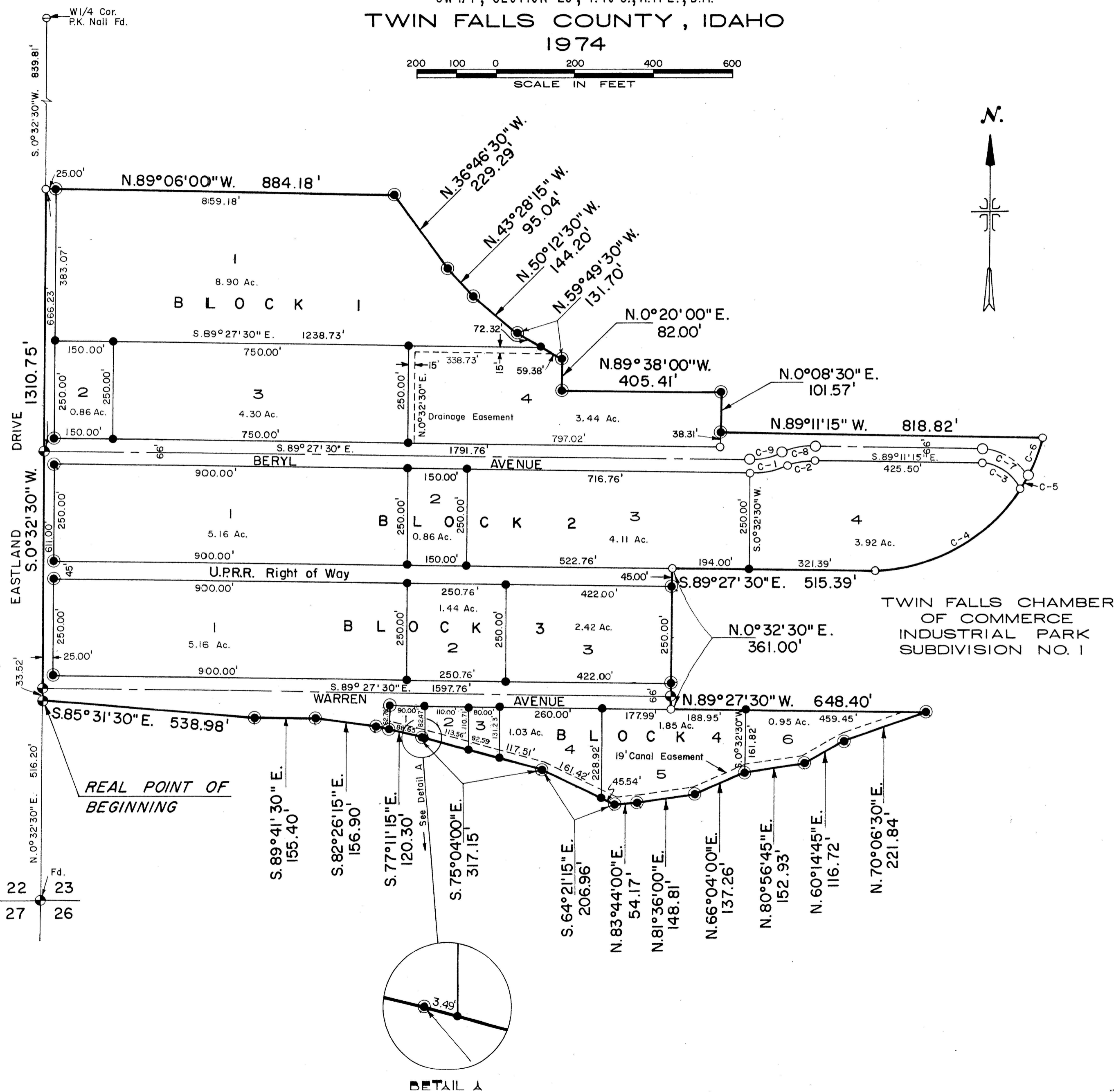
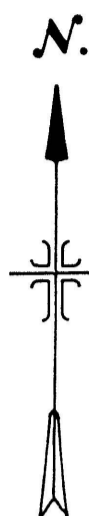
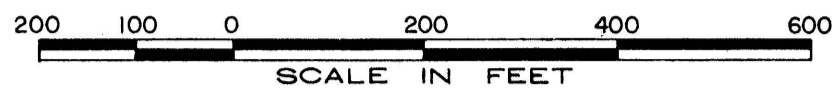


**PLAT SHOWING**  
 TWIN FALLS CHAMBER OF COMMERCE  
**INDUSTRIAL PARK SUBDIVISION NO. 2**  
 A PORTION OF  
 SW 1/4, SECTION 23, T.10 S., R.17 E., B.M.  
**TWIN FALLS COUNTY, IDAHO**  
 1974

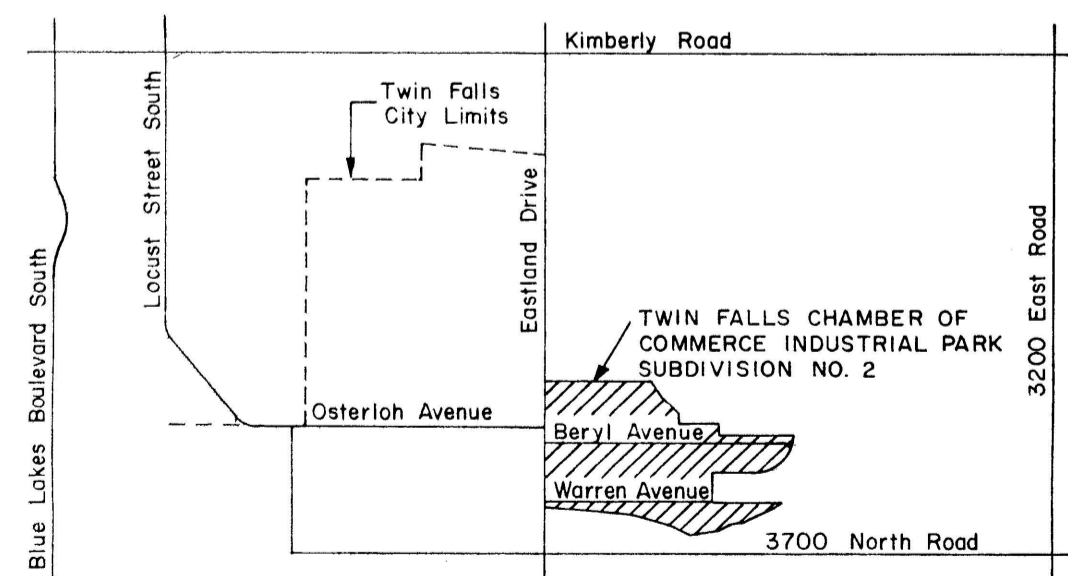


**LEGEND**

- ⊕ Brass Cap
- 3/4" x 30" Iron Pin
- 5/8" x 30" Iron Pin
- 1/2" x 24" Iron Pin
- ⊙ 1" x 30" Pipe over 1/2" Iron Pin Fd.

**CURVE DATA**

CURVE	R	Δ	T	L	CH. L.	CH. BEARING
C-1	233.00'	25°10'03"	51.43'	101.25'	100.45'	N.78°05'36" E.
C-2	167.00'	24°53'48"	37.28'	73.36'	72.77'	N.78°13'33" E.
C-3	106.89'	71°11'40"	76.52'	132.82'	124.44'	S.53°35'25" E.
C-4	435.87'	59°07'58"	247.27'	449.85'	430.14'	S.60°58'31" W.
C-5	435.87'	5°26'20"	20.70'	41.38'	41.36'	N.28°41'22" E.
C-6	435.87'	14°07'26"	54.00'	107.45'	107.17'	N.18°54'28" E.
C-7	139.89'	59°29'30"	79.94'	145.25'	138.82'	S.59°26'30" E.
C-8	200.00'	24°53'48"	44.65'	87.65'	87.15'	N.78°13'33" E.
C-9	200.00'	25°10'03"	44.15'	86.91'	86.22'	N.78°05'36" E.



**VICINITY SKETCH**  
 2000 1000 0 2000  
 SCALE IN FEET

Twin Falls County, Idaho  
 Recorded for:  
 J U B ENG  
 09:00:00 am Nov.01,1974  
 0000-672407

**J-U-B ENGINEERS, INC.**  
 Engineers Planners  
 Twin Falls, Idaho