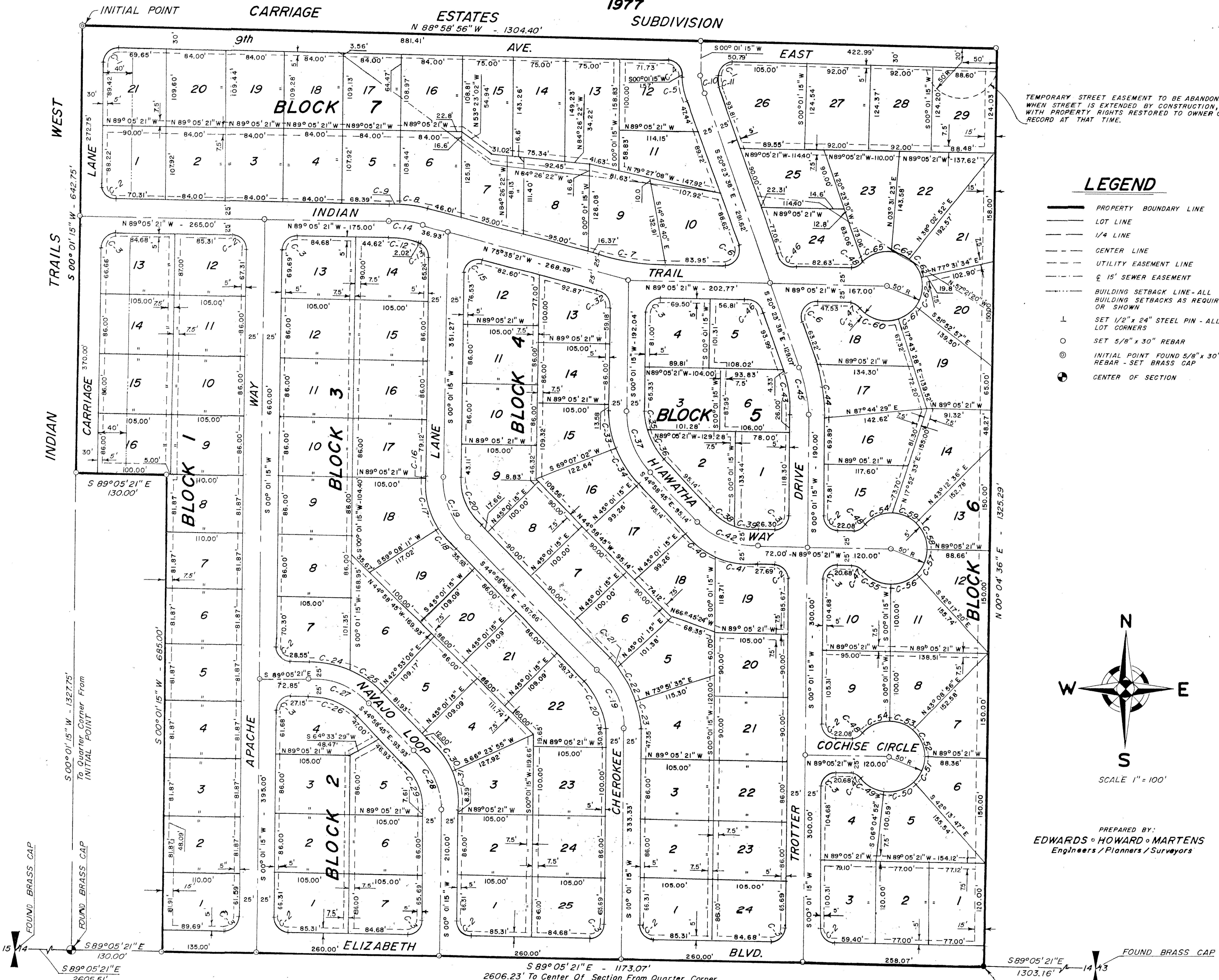


INDIAN TRAILS

LOCATED IN
SW4 NE4, SECTION 14
T. 10 S., R. 17 E., B.M.
TWIN FALLS COUNTY, IDAHO
1977
SUBDIVISION

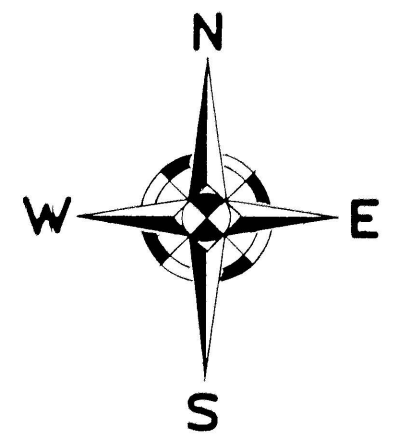


CURVE DATA					
CURVE	DELTA	RAD.	ARC	CHORD	TAN. L. C. B.
C-1	90°59'49"	20.00'	31.76'	28.53'	20.35' S 45°31'10"W
C-2	89°06'36"	20.00'	31.11'	28.06'	19.69' S 44°32'03"E
C-3	90°53'24"	20.00'	31.73'	28.50'	20.31' S 45°27'57"W
C-4	89°00'11"	20.00'	31.07'	28.04'	19.66' S 44°28'51"E
C-5	20°24'52"	98.91'	35.24'	35.05'	17.81' S 10°11'12"E
C-6	111°18'17"	20.00'	38.85'	33.03'	29.27' S 35°15'30"W
C-7	13°27'00"	424.03'	99.54'	99.31'	50.00' N 82°18'51"W
C-8	09°42'29"	236.22'	40.03'	39.98'	20.06' N 80°26'35"W
C-9	03°47'31"	236.22'	15.63'	15.63'	7.82' N 87°11'37"W
C-10	20°24'50"	73.91'	26.33'	26.19'	13.31' S 10°11'13"E
C-11	20°24'55"	48.91'	17.43'	17.33'	8.81' S 10°11'11"E
C-12	13°30'00"	186.22'	43.88'	43.78'	22.04' S 82°20'21"E
C-13	75°36'36"	20.00'	26.39'	24.52'	15.52' S 37°47'03"E
C-14	13°30'00"	211.22'	49.77'	49.65'	25.00' S 82°20'21"E
C-15	104°23'24"	20.00'	36.44'	31.60'	25.78' N 52°12'57"E
C-16	02°42'27"	145.71'	145.71'	6.89'	3.44' S 01°19'49"E
C-17	28°10'37"	145.71'	71.66'	70.94'	36.57' S 16°46'31"E
C-18	14°06'56"	145.71'	35.90'	35.81'	18.04' S 37°55'19"E
C-19	45°00'00"	120.71'	94.81'	92.39'	50.00' S 22°28'45"E
C-20	45°00'00"	95.71'	75.17'	73.25'	39.65' S 22°28'45"E
C-21	07°53'21"	20.00'	20.06'	20.05'	10.05' S 41°01'57"E
C-22	20°56'58"	145.71'	53.28'	52.98'	26.94' S 26°36'58"E
C-23	16°09'40"	145.71'	41.10'	40.96'	20.69' S 08°03'34"E
C-24	22°33'21"	148.41'	58.43'	58.05'	29.60' S 77°48'40"E
C-25	21°33'15"	148.41'	55.83'	55.50'	28.25' S 55°45'23"E
C-26	44°06'36"	98.41'	75.77'	73.91'	39.87' S 67°02'03"E
C-27	44°06'36"	123.41'	95.01'	92.68'	50.00' S 67°02'03"E
C-28	45°00'00"	120.71'	94.81'	92.39'	50.00' S 22°28'45"E
C-29	45°00'00"	95.71'	75.17'	73.25'	39.65' S 22°28'45"E
C-30	21°22'40"	145.71'	54.37'	54.05'	27.50' S 34°17'26"E
C-31	23°37'20"	145.71'	60.08'	59.65'	30.47' S 11°47'24"E
C-32	75°36'36"	20.00'	26.39'	24.52'	15.52' S 37°47'03"E
C-33	20°54'13"	145.71'	53.16'	52.87'	26.88' S 10°25'50"E
C-34	24°05'47"	145.71'	61.28'	60.83'	31.10' S 32°55'52"E
C-35	13°41'45"	95.71'	22.88'	22.82'	11.49' S 06°49'35"E
C-36	31°18'15"	95.71'	52.29'	51.64'	26.82' S 29°19'39"E
C-37	45°00'00"	120.71'	94.81'	92.39'	50.00' S 22°28'45"E
C-38	25°27'35"	98.41'	43.73'	43.37'	22.23' S 57°42'33"E
C-39	18°39'01"	98.41'	32.03'	31.89'	16.16' S 79°45'50"E
C-40	21°11'38"	148.41'	54.90'	54.59'	27.77' S 55°34'35"E
C-41	22°54'58"	148.41'	59.36'	58.97'	30.08' S 77°37'52"E
C-42	44°06'36"	123.41'	95.01'	92.68'	50.00' S 67°02'03"E
C-43	20°24'53"	169.38'	60.35'	60.03'	30.50' N 10°11'12"W
C-44	20°24'53"	219.38'	78.17'	77.75'	39.50' N 10°11'12"W
C-45	20°24'53"	194.38'	69.26'	68.89'	35.00' N 10°11'12"W
C-46	68°41'43"	20.00'	23.98'	22.57'	13.67' S 54°44'30"E
C-47	49°59'41"	20.00'	17.45'	16.90'	9.33' S 64°05'30"E
C-48	49°59'41"	20.00'	17.45'	16.90'	9.33' N 65°54'48"E
C-49	44°49'28"	50.00'	39.12'	38.13'	20.62' S 61°30'24"E
C-50	48°18'39"	50.00'	42.16'	40.92'	22.42' N 71°55'33"E
C-51	46°51'34"	50.00'	40.89'	39.76'	21.67' N 24°20'26"E
C-52	47°45'43"	50.00'	41.68'	40.48'	22.14' N 22°58'12"W
C-53	43°07'42"	50.00'	37.64'	36.76'	19.76' N 68°24'45"W
C-54	49°06'17"	50.00'	42.85'	41.55'	22.84' S 65°27'58"W
C-55	50°53'05"	50.00'	44.41'	42.96'	23.79' S 64°32'12"E
C-56	42°18'35"	50.00'	36.92'	36.09'	19.35' N 68°51'58"E
C-57	46°48'01"	50.00'	40.84'	39.72'	21.64' N 24°18'40"E
C-58	47°42'03"	50.00'	41.63'	40.44'	22.11' N 22°56'22"W
C-59	43°11'21"	50.00'	37.69'	36.80'	19.79' N 68°23'04"W
C-60	68°37'47"	50.00'	59.89'	56.37'	34.13' S 73°24'33"E
C-61	34°09'30"	50.00'	29.81'	29.37'	15.36' N 55°11'48"E
C-62	50°35'29"	50.00'	44.15'	42.73'	23.63' N 12°49'18"E
C-63	39°28'42"	50.00'	34.45'	33.77'	17.94' N 32°12'47"W
C-64	34°31'29"	50.00'	30.13'	29.68'	15.54' N 69°12'53"W
C-65	52°36'25"	50.00'	45.91'	44.31'	24.72' S 67°13'10"W

TEMPORARY STREET EASEMENT TO BE ABANDONED WHEN STREET IS EXTENDED BY CONSTRUCTION, WITH PROPERTY RIGHTS RESTORED TO OWNER OF RECORD AT THAT TIME.

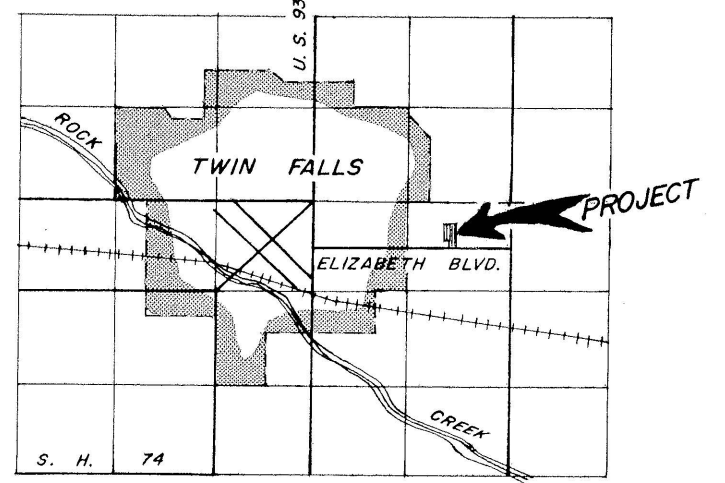
LEGEND

- PROPERTY BOUNDARY LINE
- LOT LINE
- - - 1/4 LINE
- - - CENTER LINE
- - - UTILITY EASEMENT LINE
- - - 15' SEWER EASEMENT
- - - BUILDING SETBACK LINE - ALL BUILDING SETBACKS AS REQUIRED OR SHOWN
- ⊥ SET 1/2" x 24" STEEL PIN - ALL LOT CORNERS
- SET 5/8" x 30" REBAR
- ⊙ INITIAL POINT FOUND 5/8" x 30" REBAR - SET BRASS CAP
- CENTER OF SECTION



SCALE 1" = 100'

PREPARED BY:
EDWARDS • HOWARD • MARTENS
Engineers / Planners / Surveyors



VICINITY SKETCH Twin Falls County, Idaho
Recorded for:
EHM ENG
SCALE 1/2" = 1 MILE

Sanitary restriction in force under Title 50 Chapter 13, Idaho Code.

Sanitary restriction in force under Title 50 Chapter 13, Idaho Code.