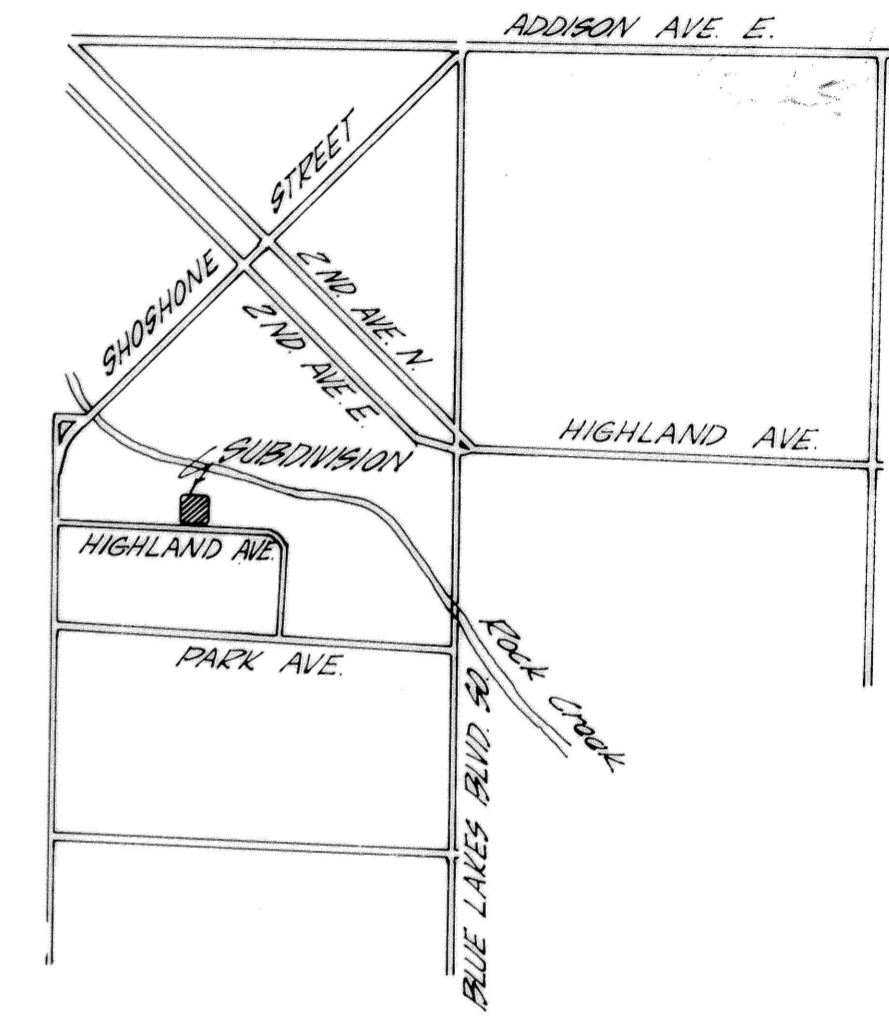
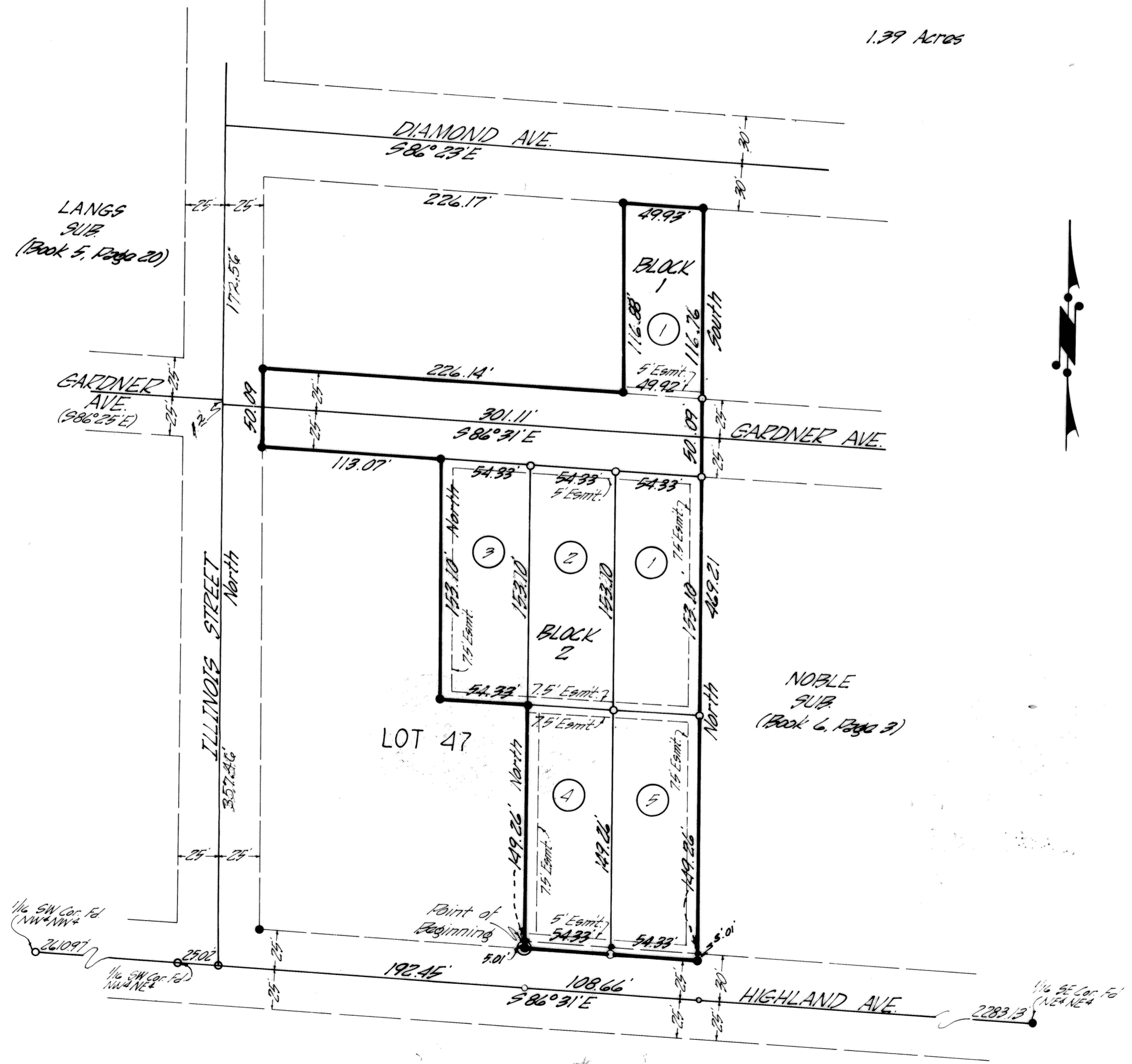


Book 12 Page 28
 Hitching Post
 Amended

**AMENDED PLAT
 HITCHING POST SUBDIVISION**
 Located in Lot 47 of "BUENA VISTA SUBDIVISION"
 Sec. 21, T.10S., R.17E., B.M. Twin Falls County, Idaho

1.39 Acres



TWIN FALLS VICINITY SKETCH
 2" = 1 Mile

- LEGEND**
- 1/2" x 24" Steel Pin ○
 - 5/8" x 30" Steel Pin ●
 - Lot Line ———
 - Utility Easement - - - - -
 - Subdivision Limit = = = = =

Scale 1" = 50'

Twin Falls County, Idaho
 Recorded for:
 ROOT, JOHN
 09:00:00 am Jul. 01, 1980
 0000 - 786046