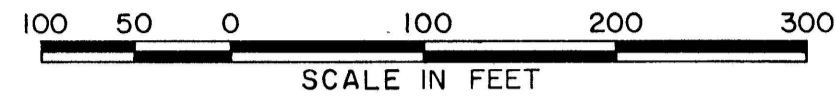
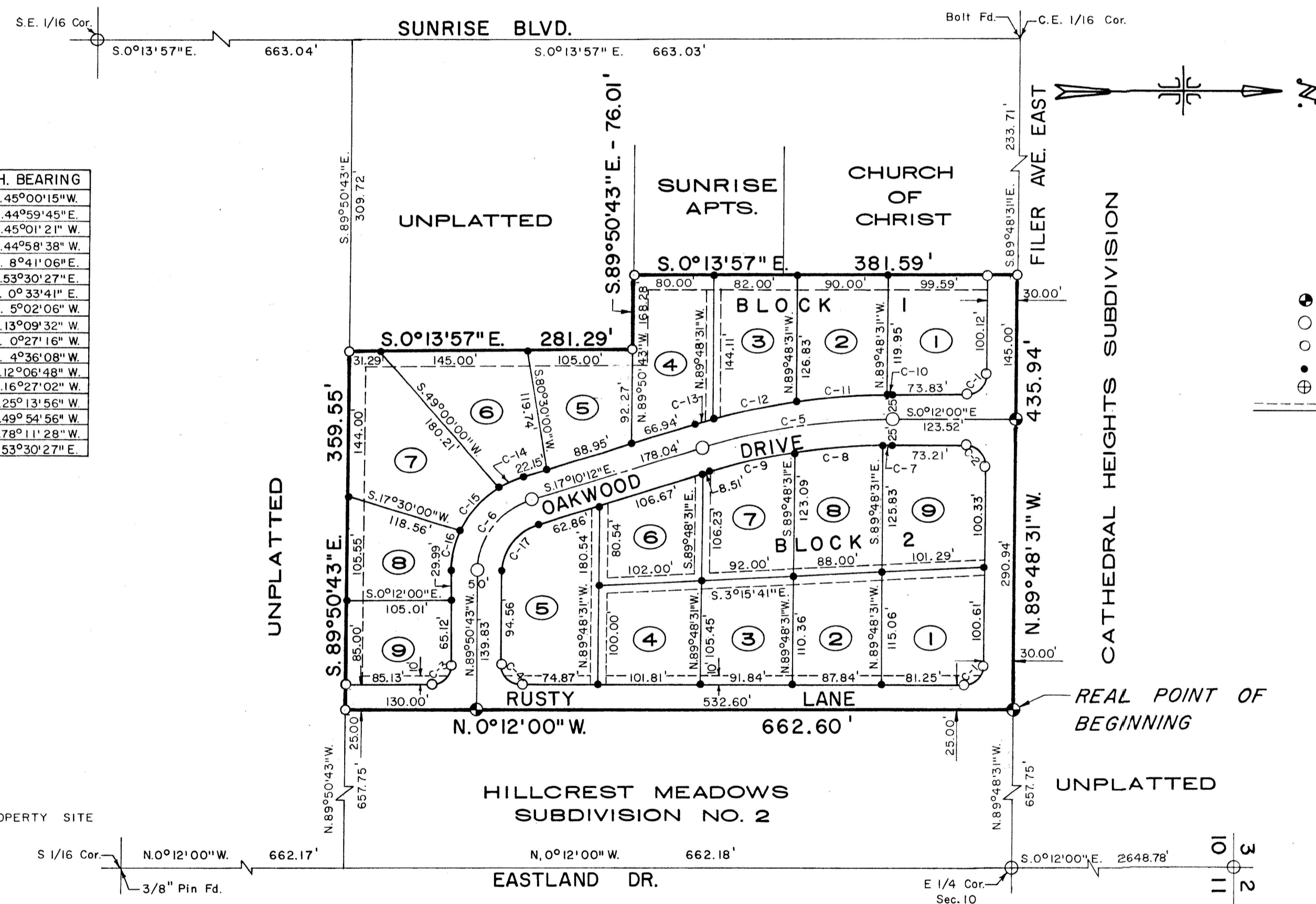


PLAT SHOWING
HILLCREST MEADOWS SUBDIVISION NO. 1
 A PORTION OF
 THE N 1/2 NE 1/4 SE 1/4, SECTION 10, T.10S., R.17E., B.M.
 TWIN FALLS, TWIN FALLS COUNTY, IDAHO
 1974

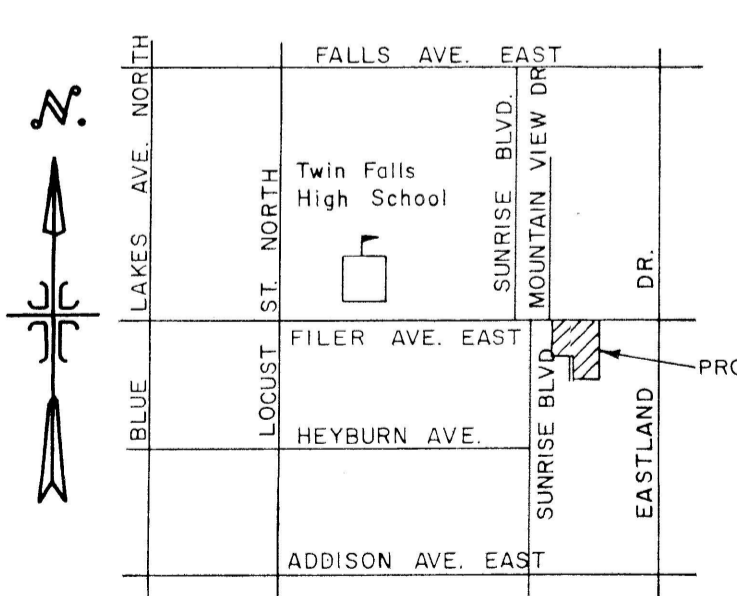


CURVE	R	Δ	T	L	CH. L.	CH. BEARING
C-1	20.00'	89°36'31"	19.86'	31.28'	28.19'	N.45°00'15"W.
C-2	20.00'	90°23'29"	20.14'	31.55'	28.38'	N.44°59'45"E.
C-3	20.00'	89°38'43"	19.88'	31.29'	28.20'	N.45°01'21"W.
C-4	20.00'	90°21'17"	20.12'	31.54'	28.37'	S.44°58'38"W.
C-5	640.00'	16°58'12"	95.48'	189.56'	188.86'	S. 8°41'06"E.
C-6	75.00'	72°40'31"	55.17'	95.13'	88.88'	S.53°30'27"E.
C-7	615.00'	0°43'23"	3.88'	7.76'	7.76'	S. 0°33'41"E.
C-8	615.00'	8°13'29"	44.22'	88.28'	88.21'	N. 5°02'06"W.
C-9	615.00'	8°01'20"	43.12'	86.11'	86.04'	N.13°09'32"W.
C-10	665.00'	0°30'33"	2.95'	5.91'	5.91'	N. 0°27'16"W.
C-11	665.00'	7°47'11"	45.26'	90.37'	90.30'	N. 4°36'08"W.
C-12	665.00'	7°14'09"	42.05'	83.98'	83.93'	N.12°06'48"W.
C-13	665.00'	1°26'19"	8.35'	16.70'	16.70'	N.16°27'02"W.
C-14	100.00'	16°07'27"	14.16'	28.14'	28.05'	N.25°13'56"W.
C-15	100.00'	33°14'34"	29.85'	58.02'	57.21'	N.49°54'56"W.
C-16	100.00'	23°18'30"	20.63'	40.68'	40.40'	N.78°11'28"W.
C-17	50.00'	72°40'31"	36.78'	63.42'	59.25'	S.53°30'27"E.



- LEGEND**
- ⊙ Brass Cap
 - 3/4" x 30" Iron Pin
 - 5/8" x 30" Iron Pin
 - 1/2" x 24" Iron Pin
 - ⊕ Brass Cap Found
 - Public Utilities, Irrigation, and Drainage Easements 15' from Property Line for Exterior Boundaries and 7.5' for Interior Lot Lines, Except as Shown.

NOTE:
 1. There is hereby reserved along all lot frontages adjacent to streets, a 5' wide Easement for Public Utilities.



Twin Falls County, Idaho
 Recorded for:
J U B ENG
 09:00:00 am Mar. 01, 1974
0000-661741