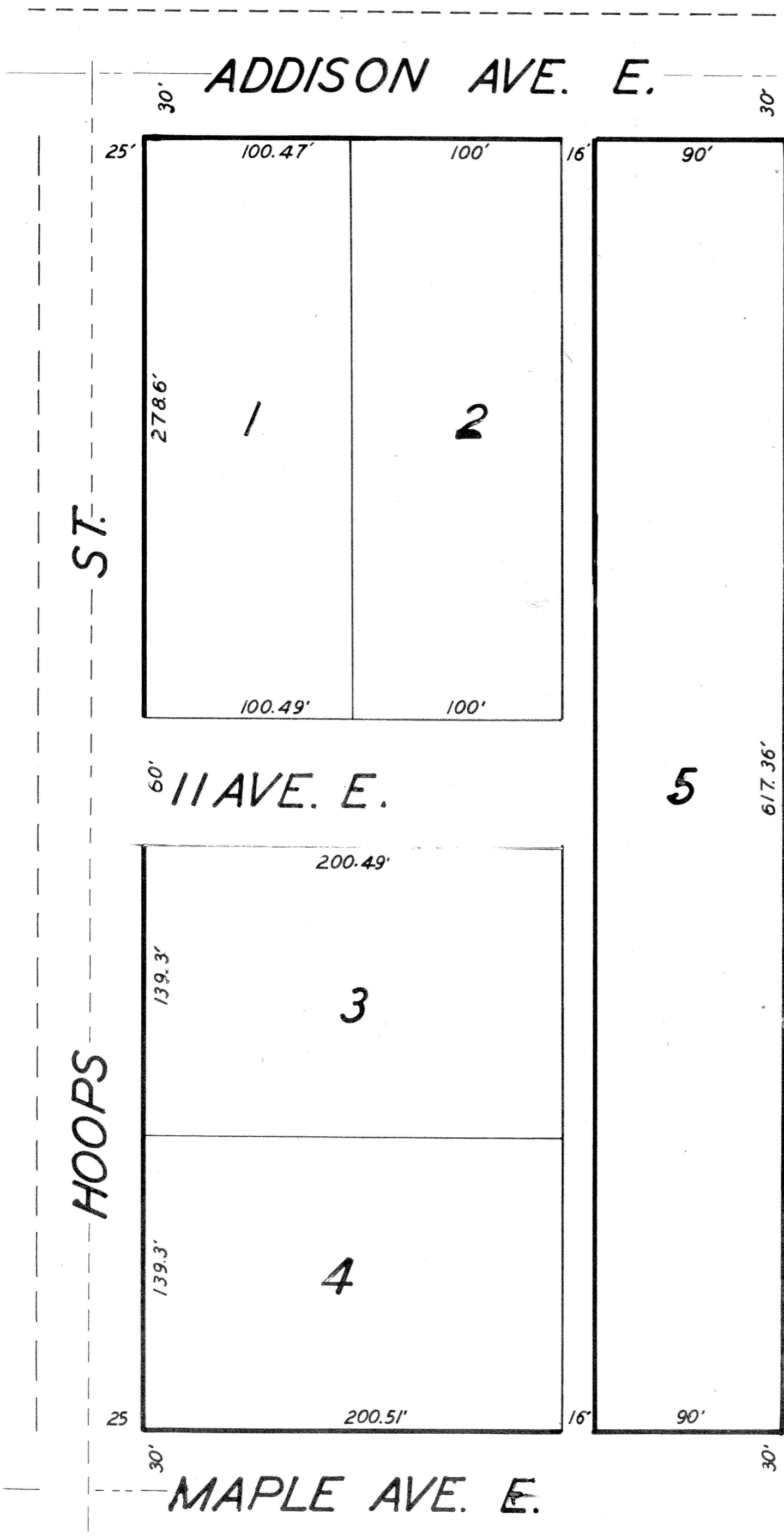


**HIGHVIEW SUBDIVISION
LOT NO. 2, HILL TRACT NO. 1
NE⁴ NE⁴ SECTION 15, T. 10 S., R. 17 E.
SCALE 1"=50'**



STATE OF IDAHO S.S.
COUNTY OF TWIN FALLS
KNOW ALL MEN BY THESE PRESENTS: THAT WE THE
UNDERSIGNED DO HEREBY CERTIFY THAT THE
FOLLOWING IS A TRUE AND CORRECT DESCRIPTION
OF THE LAND INCLUDED IN THE HIGHVIEW SUBDI-
VISION LOCATED IN LOT NO. 2 HILL TRACT NO. 1
IN THE NE⁴ NE⁴ SECTION 15, T. 10 S., R. 17 E. B.M. AND
WE DO FURTHER CERTIFY THAT IT IS OUR INTEN-
TION TO INCLUDE THE SAME IN SAID PLAT AND WE
DO FURTHER HEREBY DECLARE THAT IN CONSIDER-
ATION OF THE FILING OF SAID PLAT BY THE RE-
CORDER OF TWIN FALLS COUNTY IDAHO AND THE
ACCEPTANCE BY THE PUBLIC OF THE STREETS AND
ALLEYS SHOWN THEREON WE DO FURTHER GIVE
AND GRANT TO THE PUBLIC FOREVER IN FEE SIMPLE,
SUCH PORTIONS OF THE PREMISES PLATTED AS ARE
ON SAID PLAT SET APART FOR STREETS AND
ALLEYS FOR PUBLIC USE FOREVER.

Venice Leopold

SUBSCRIBED AND SWORN TO BEFORE
ME THIS 7 DAY OF OCTOBER 1946.

Caroline L. Lewis
NOTARY PUBLIC

STATE OF IDAHO S.S.
COUNTY OF TWIN FALLS
WE HEREBY CERTIFY THAT WE PREPARED THE MAP OF THE
HIGHVIEW SUBDIVISION WHICH IS LOCATED IN
LOT NO. 2, HILL TRACT NO. 1 IN THE NE⁴ NE⁴, SEC.
TION 15, T. 10 S., R. 17 E. B.M. COMPRISING LOTS 1 & 2
OF HILL TRACT NO. 1 AND THAT THE SEVERAL BLOCKS
AND LOTS ARE STAKED TO CONFORM THEREWITH.

Twin Falls Engineering Co.

SUBSCRIBED AND SWORN TO BEFORE
ME THIS 7 DAY OF OCTOBER 1946.

Caroline L. Lewis
NOTARY PUBLIC

STATE OF IDAHO S.S. 374283
COUNTY OF TWIN FALLS
I HEREBY CERTIFY THAT THIS INSTRUMENT WAS
FILED FOR RECORD AT THE REQUEST OF
AT 3:35 O'CLOCK P. M. THIS 11th DAY OF SEPTEMBER 1947
IN MY OFFICE AND DULY RECORDED IN BOOK OF PLATS
NO. 5-66

C. A. Ruel
EX OFFICIO RECORDER

BY DEPUTY

APPROVED AND ACCEPTED BY MAYOR AND COUNCIL
OF THE CITY OF TWIN FALLS IDAHO THIS 1st DAY
OF SEPTEMBER 1947.

H. J. Luntz
MAYOR

Caroline L. Lewis
CITY CLERK