

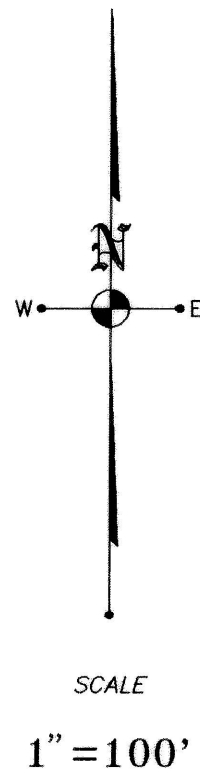
AMENDED GOLDEN SPUR SUBDIVISION

LOCATED IN
 NW⁴SE⁴ SEC. 7, T.10 S., R.16 E., B.M.
 TWIN FALLS COUNTY, IDAHO
 1993

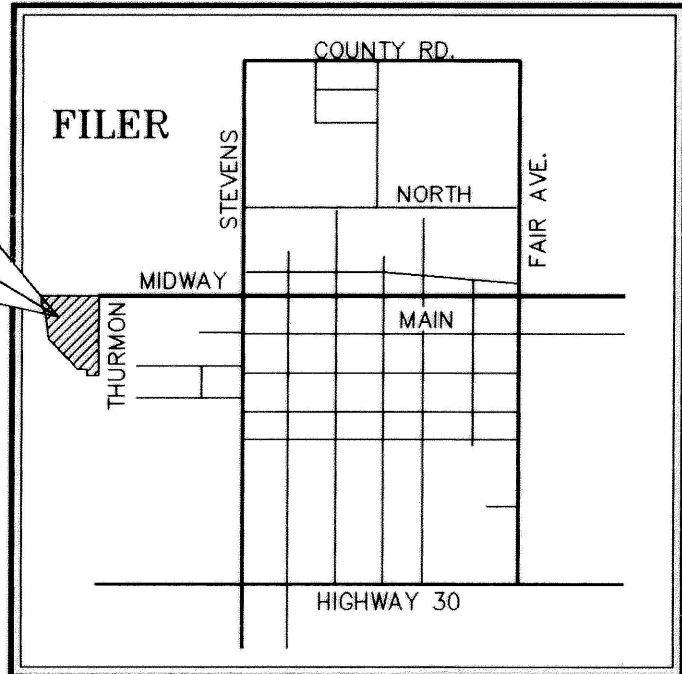
LEGEND

- PROPERTY BOUNDARY LINE
- LOT LINES
- CANAL EASEMENT LINE
- FUTURE ROAD EASEMENT LINE
- UTILITY EASEMENT LINE
- SET 1/2"x24" STEEL PIN
- SET 5/8"x30" STEEL PIN
- INITIAL POINT-FND. 5/8"x30" REBAR-SET BRASS CAP
- CENTER OF SECTION

CURVE	DELTA	RADIUS	ARC	CHORD	TAN.	L.C.B.
1	71°00'00"	219.91	272.51	255.40	156.86	S 54°30'19"E
2	36°52'15"	100.00	65.35	63.25	33.33	N 18°22'33"E
3	73°44'30"	100.00	128.70	120.00	75.00	S 00°03'35"E
4	36°52'15"	100.00	64.35	63.25	33.33	N 18°29'53"W
5	89°56'44"	20.00	31.40	28.27	19.98	N 45°01'57"W
6	90°03'16"	20.00	31.43	28.30	20.02	N 44°58'03"E
7	89°56'44"	20.00	31.40	28.27	19.98	S 45°01'57"E
8	90°03'16"	20.00	31.43	28.30	20.02	S 44°58'03"E
9	89°56'44"	20.00	31.40	28.27	19.98	N 45°01'57"W
10	90°03'16"	20.00	31.43	28.30	20.02	N 44°58'03"E
11	89°56'44"	20.00	31.40	28.27	19.98	S 45°01'57"E
12	90°03'16"	20.00	31.43	28.30	20.02	S 44°58'03"E
13	89°56'44"	20.00	31.40	28.27	19.98	N 45°01'57"W
14	36°52'15"	70.00	45.05	44.27	23.33	N 18°22'33"E
15	36°52'08"	130.00	83.65	82.22	43.33	S 18°22'37"W
16	90°03'16"	20.00	31.43	28.30	20.02	S 44°58'03"E
17	40°50'03"	50.00	35.63	34.89	18.61	N 39°38'33"W
18	51°37'04"	50.00	45.05	43.54	24.18	N 06°35'00"E
19	57°32'53"	50.00	50.22	48.14	27.46	N 61°09'58"E
20	36°52'22"	130.00	83.66	82.23	43.34	S 18°29'40"E
21	36°52'15"	70.00	45.05	44.27	23.33	N 18°47'29"W
22	60°03'16"	50.00	52.41	50.04	28.90	S 60°01'57"E
23	161°20'13"	50.00	140.79	98.68	304.28	S 80°40'26"E
24	89°56'44"	20.00	31.40	28.27	19.98	N 45°01'57"W
25	29°56'44"	50.00	26.13	25.84	13.37	S 44°58'03"E
26	137°09'04"	50.00	119.69	93.09	127.42	S 68°34'22"W
27	69°43'53"	50.00	60.85	57.17	34.84	N 64°51'37"E
28	80°18'07"	50.00	70.05	64.46	42.16	S 40°08'23"E
29	89°56'44"	20.00	31.40	28.27	19.98	N 45°01'57"W
30	90°03'16"	20.00	31.43	28.30	20.02	N 44°58'03"E
31	60°03'16"	50.00	52.41	50.04	28.90	N 60°01'57"E
32	89°56'44"	50.00	78.49	70.68	49.95	S 44°58'03"E
33	23°23'41"	244.91	100.00	99.31	50.71	S 78°18'29"E
34	24°12'38"	244.91	103.49	102.72	52.53	S 54°30'19"E
35	23°23'41"	244.91	100.00	99.31	50.71	S 30°42'09"E
36	71°00'00"	20.00	24.74	23.23	14.27	N 54°30'19"W
37	89°56'44"	20.00	31.40	28.27	19.98	N 45°01'57"W
38	109°00'00"	20.00	38.05	32.56	28.04	S 35°29'41"W
39	71°00'00"	20.00	24.78	23.23	14.27	S 54°30'19"E
40	150°00'00"	50.00	130.90	96.59	186.60	N 75°00'19"W
41	134°18'55"	50.00	117.21	92.16	118.70	N 67°09'09"E
42	15°41'05"	50.00	13.69	13.64	6.89	S 37°50'51"E
43	109°00'00"	25.00	47.56	40.71	35.05	S 35°29'41"W
44	90°03'16"	20.00	31.43	28.30	20.02	S 44°58'03"E
45	17°56'20"	194.91	61.03	60.78	30.76	S 81°02'09"E
46	53°03'40"	194.91	180.50	174.12	97.31	S 45°32'09"E



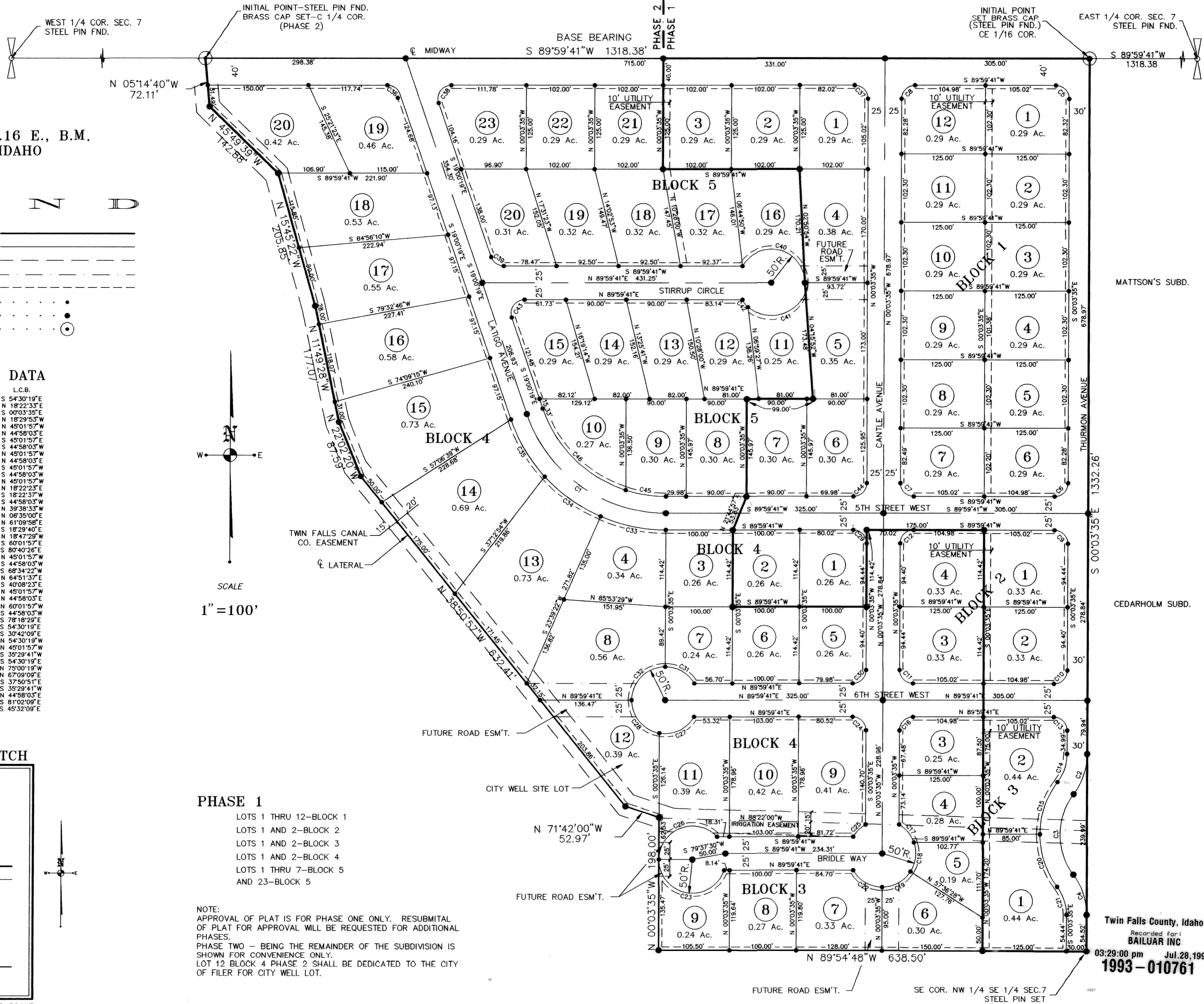
VICINITY SKETCH



PHASE 1

- LOTS 1 THRU 12-BLOCK 1
- LOTS 1 AND 2-BLOCK 2
- LOTS 1 AND 2-BLOCK 3
- LOTS 1 AND 2-BLOCK 4
- LOTS 1 THRU 7-BLOCK 5
- AND 23-BLOCK 5

NOTE:
 APPROVAL OF PLAT IS FOR PHASE ONE ONLY. RESUBMITAL OF PLAT FOR APPROVAL WILL BE REQUESTED FOR ADDITIONAL PHASES.
 PHASE TWO - BEING THE REMAINDER OF THE SUBDIVISION IS SHOWN FOR CONVENIENCE ONLY.
 LOT 12 BLOCK 4 PHASE 2 SHALL BE DEDICATED TO THE CITY OF FILER FOR CITY WELL LOT.



Twin Falls County, Idaho
 Recorded for:
BAILUAR INC
 03:29:00 pm Jul. 28, 1993
1993-010761