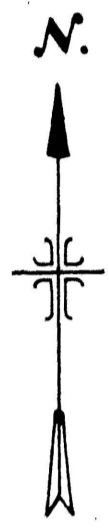
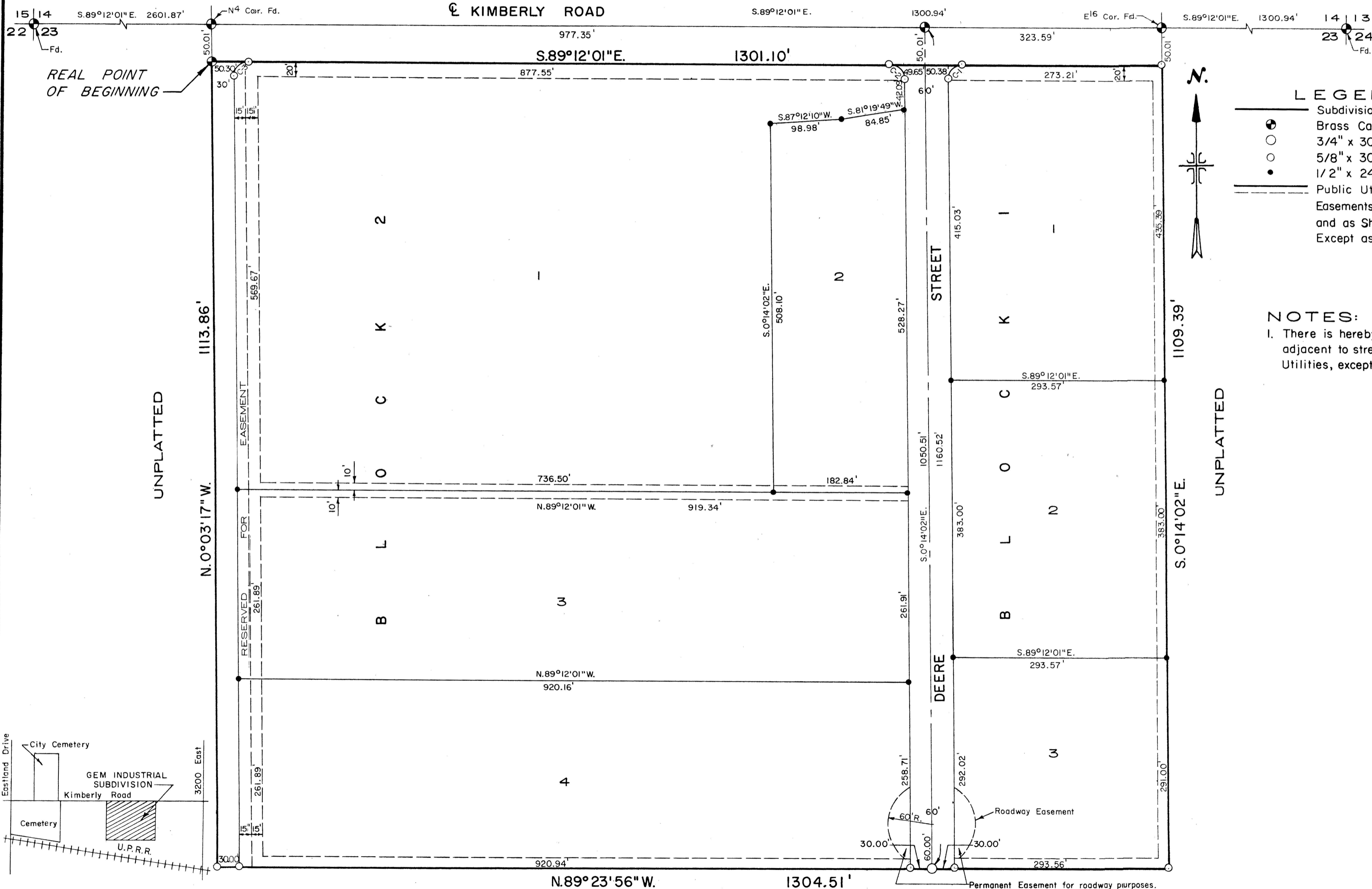
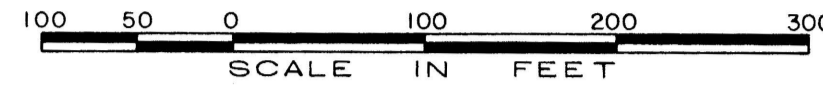


PLAT SHOWING
GEM INDUSTRIAL SUBDIVISION
A SUBDIVISION IN
A PART OF THE NW 1/4 NE 1/4, SECTION 23, T.10S., R.17E., B.M.
TWIN FALLS COUNTY, IDAHO
1974

Auxiliary Plan - 28-966; 11-6-74

CURVE	R	Δ	T	LENGTH	CH. L.	CH. BEARING
C-1	20.00'	91°02'01"	20.36'	31.78'	28.54'	S.45°16'59"W.
C-2	20.00'	88°57'59"	19.64'	31.06'	28.03'	S.44°43'02"E.
C-3	20.00'	90°51'16"	20.30'	31.71'	28.49'	N.45°22'21"E.

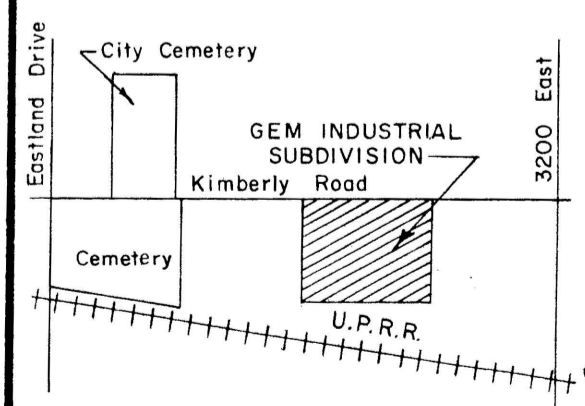


LEGEND

- Subdivision Boundary
- ⊙ Brass Cap
- 3/4" x 30" Iron Pin
- 5/8" x 30" Iron Pin
- 1/2" x 24" Iron Pin
- - - Public Utilities, Irrigation, and Drainage Easements 15' from Exterior Property Lines, and as Shown from Interior Property Lines, Except as Noted.

NOTES:

1. There is hereby reserved along all lot frontages adjacent to streets, a 5' wide Easement for Public Utilities, except as shown.



Twin Falls County, Idaho
Recorded for:
JUB ENG
09:00:00 am Nov. 01, 1974
0000-672368

J-U-B ENGINEERS, INC.
Engineers Planners
Twin Falls, Idaho