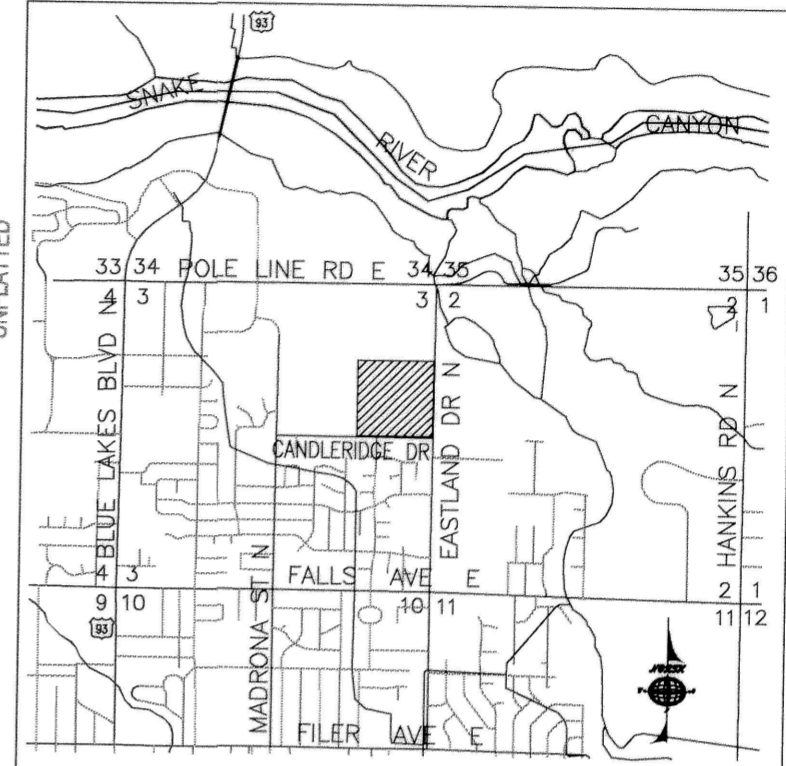
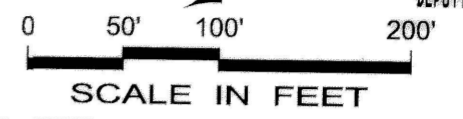


ENSIGN POINT SUBDIVISION
 LOCATED IN THE SE 4 NE 4,
 SECTION 3, T.10 S., R.17 E., B.M.
 TWIN FALLS COUNTY, ID, 2006

TWIN FALLS COUNTY
 RECORDED FOR:
 FIRST AMERICAN TITLE CO.
 4:47:32 pm 06-14-2006
2006-014492
 NO. PAGES: 2 FEE: \$22.00
 KRISTINA GLASCOCK
 COUNTY CLERK
 DEPUTY: CNICE



VICINITY MAP
 NOT TO SCALE

CENTER LINE CURVE TABLE

Curve #	DELTA	R	ARC	LC	T	LCB
CL1	22°25'13"	100.00'	39.13'	38.88'	19.82'	N78°26'37"W
CL2	22°30'00"	100.00'	39.27'	39.02'	19.89'	S79°05'47"W
CL3	22°30'00"	100.00'	39.27'	39.02'	19.89'	N11°31'00"E
CL4	44°55'13"	325.00'	254.80'	248.33'	134.35'	N0°18'23"E
CL5	22°30'00"	100.00'	39.27'	39.02'	19.89'	N10°54'13"W

CURVE TABLE

Curve #	DELTA	R	ARC	LC	T	LCB
C66	90°00'00"	50.00'	78.54'	70.71'	50.00'	N44°39'13"W
C67	49°59'41"	50.00'	43.63'	42.26'	23.31'	N25°20'38"E
C68	49°59'41"	20.00'	17.45'	16.90'	9.33'	N25°20'38"E
C69	90°00'00"	20.00'	31.42'	28.28'	20.00'	S45°20'47"W
C70	90°00'00"	20.00'	31.42'	28.28'	20.00'	N44°39'13"W
C71	49°59'41"	20.00'	17.45'	16.90'	9.33'	S24°39'04"E
C72	49°59'41"	50.00'	43.63'	42.26'	23.31'	S24°39'04"E
C73	90°00'00"	50.00'	78.54'	70.71'	50.00'	S45°20'47"W
C74	90°00'00"	50.00'	78.54'	70.71'	50.00'	N44°39'13"W
C75	49°59'41"	50.00'	43.63'	42.26'	23.31'	N25°20'38"E
C76	49°59'41"	20.00'	17.45'	16.90'	9.33'	N25°20'38"E
C77	90°00'00"	20.00'	31.42'	28.28'	20.00'	S45°20'47"W
C78	90°00'00"	20.00'	31.42'	28.28'	20.00'	N44°39'13"W
C79	49°59'41"	20.00'	17.45'	16.90'	9.33'	S24°39'04"E
C80	49°59'41"	50.00'	43.63'	42.26'	23.31'	S24°39'04"E
C81	90°00'00"	50.00'	78.54'	70.71'	50.00'	S45°20'47"W
C82	90°00'00"	50.00'	78.54'	70.71'	50.00'	N44°39'13"W
C83	49°59'41"	50.00'	43.63'	42.26'	23.31'	N25°20'38"E
C84	49°59'41"	20.00'	17.45'	16.90'	9.33'	N25°20'38"E

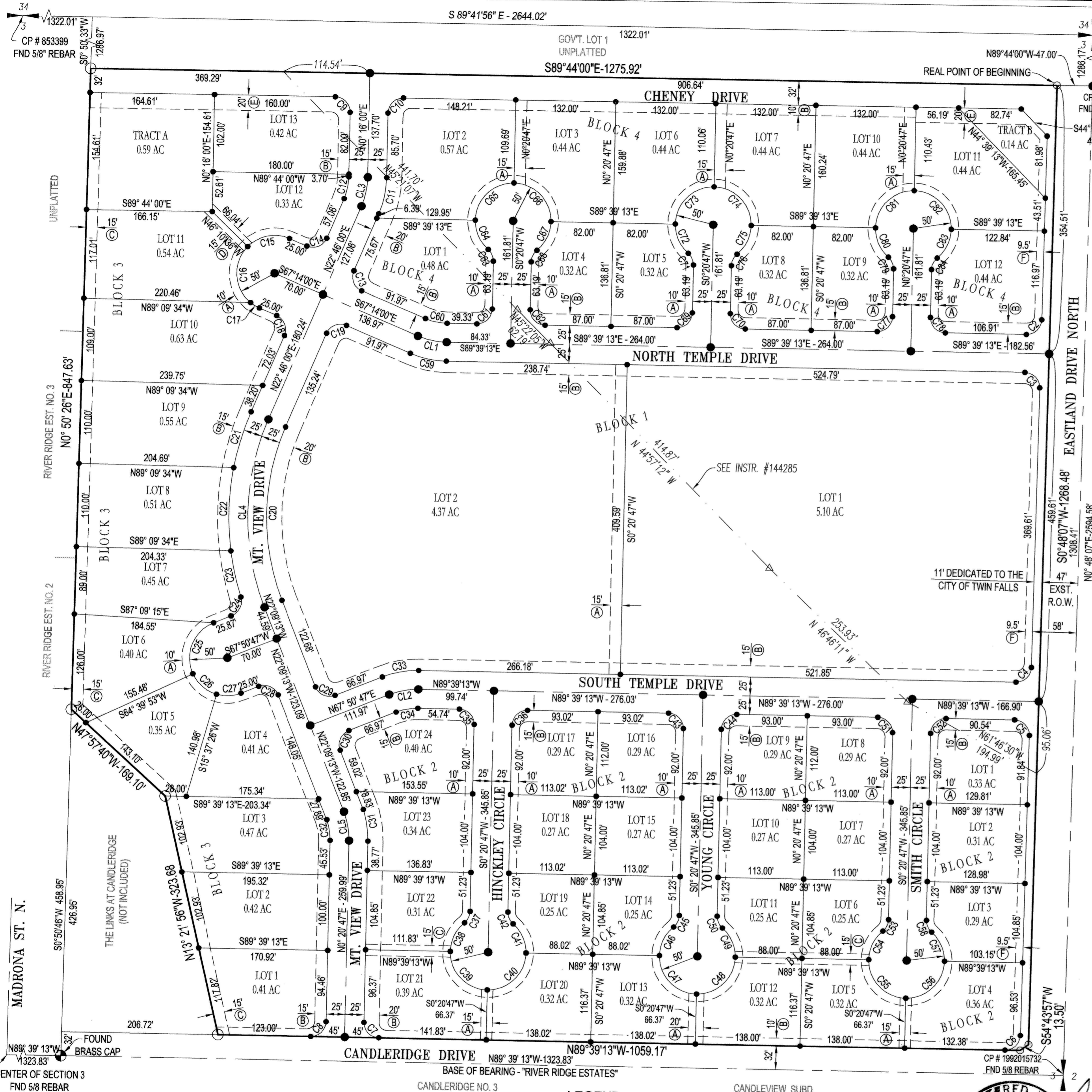
MONUMENT CERTIFICATION

THE INTERIOR MONUMENTS ON THIS PLAT SHOWN AS "TO BE SET", WILL BE SET IN ACCORDANCE WITH SECTION 50-1333, IDAHO CODE ON OR BEFORE _____ OR AS DETERMINED BY THE CITY OF TWIN FALLS.

EASEMENT LEGEND

- (A) UTILITY EASEMENT
- (B) UTILITY & SIDEWALK EASEMENT
- (C) IRRIGATION EASEMENT
- (D) DRAINAGE EASEMENT
- (E) UTILITY, DRAINAGE, & SIDEWALK EASEMENT
- (F) UTILITY & LANDSCAPING EASEMENT

Curve #	DELTA	R	ARC	LC	T	LCB
C2	89°32'40"	20.00'	31.26'	28.17'	19.84'	S45°34'27"W
C3	90°27'20"	20.00'	31.57'	28.40'	20.16'	S44°25'33"E
C4	89°32'40"	20.00'	31.26'	28.17'	19.84'	S45°34'27"W
C5	90°27'20"	20.00'	31.57'	28.40'	20.16'	S44°25'33"E
C6	89°32'40"	20.00'	31.26'	28.17'	19.84'	S45°34'27"W
C7	90°00'00"	20.00'	31.42'	28.28'	20.00'	N44°39'13"W
C8	90°00'00"	20.00'	31.42'	28.28'	20.00'	S45°20'47"W
C9	90°00'00"	20.00'	31.42'	28.28'	20.00'	S44°44'00"E
C10	90°00'00"	20.00'	31.42'	28.28'	20.00'	N45°16'00"E
C11	22°30'00"	125.00'	49.09'	48.77'	24.86'	N11°31'00"E
C12	22°30'00"	75.00'	29.45'	29.26'	14.92'	S11°31'00"W
C13	90°00'00"	20.00'	31.42'	28.28'	20.00'	N22°14'00"W
C14	90°00'00"	20.00'	31.42'	28.28'	20.00'	S67°46'00"W
C15	68°56'35"	50.00'	60.16'	56.60'	34.33'	S78°17'42"W
C16	95°17'07"	50.00'	83.15'	73.90'	54.84'	S3°49'09"E
C17	15°46'17"	50.00'	13.76'	13.72'	6.93'	S59°20'51"E
C18	90°00'00"	20.00'	31.42'	28.28'	20.00'	S22°14'00"E
C19	90°00'00"	20.00'	31.42'	28.28'	20.00'	N67°46'00"E
C20	44°55'13"	300.00'	235.20'	229.22'	124.02'	N0°18'23"E
C21	12°41'49"	350.00'	77.56'	77.40'	38.94'	S16°25'06"W
C22	18°04'56"	350.00'	110.46'	110.00'	55.69'	S1°01'43"W
C23	10°12'13"	350.00'	62.33'	62.25'	31.25'	S13°06'51"E
C24	86°03'45"	20.00'	30.04'	27.30'	18.67'	S24°48'55"W
C25	93°10'53"	50.00'	81.32'	72.65'	52.86'	S21°15'20"W
C26	49°02'27"	50.00'	42.80'	41.50'	22.81'	S49°51'20"E
C27	37°46'39"	50.00'	32.97'	32.37'	17.11'	N86°44'07"E
C28	90°00'00"	20.00'	31.42'	28.28'	20.00'	S67°09'13"E
C29	90°00'00"	20.00'	31.42'	28.28'	20.00'	N67°09'13"W
C30	90°00'00"	20.00'	31.42'	28.28'	20.00'	N22°50'47"E
C31	22°30'00"	125.00'	49.09'	48.77'	24.86'	N10°54'13"W
C32	22°30'00"	75.00'	29.45'	29.26'	14.92'	S10°54'13"E
C33	22°30'00"	125.00'	49.09'	48.77'	24.86'	S79°05'47"W
C34	22°30'00"	75.00'	29.45'	29.26'	14.92'	N79°05'47"E
C35	90°00'00"	20.00'	31.42'	28.28'	20.00'	S44°39'13"E
C36	90°00'00"	20.00'	31.42'	28.28'	20.00'	N45°20'47"E
C37	49°59'41"	20.00'	17.45'	16.90'	9.33'	S25°20'38"W
C38	49°59'41"	50.00'	43.63'	42.26'	23.31'	S25°20'38"W
C39	90°00'00"	50.00'	78.54'	70.71'	50.00'	S44°39'13"E
C40	90°00'00"	50.00'	78.54'	70.71'	50.00'	N45°20'47"E
C41	49°59'41"	50.00'	43.63'	42.26'	23.31'	N24°39'04"W
C42	49°59'41"	20.00'	17.45'	16.90'	9.33'	N24°39'04"W
C43	90°00'00"	20.00'	31.42'	28.28'	20.00'	S44°39'13"E
C44	90°00'00"	20.00'	31.42'	28.28'	20.00'	N45°20'47"E
C45	49°59'41"	20.00'	17.45'	16.90'	9.33'	S25°20'38"W
C46	49°59'41"	50.00'	43.63'	42.26'	23.31'	S25°20'38"W
C47	90°00'00"	50.00'	78.54'	70.71'	50.00'	S44°39'13"E
C48	90°00'00"	50.00'	78.54'	70.71'	50.00'	N45°20'47"E
C49	49°59'41"	50.00'	43.63'	42.26'	23.31'	N24°39'04"W
C50	49°59'41"	20.00'	17.45'	16.90'	9.33'	N24°39'04"W
C51	90°00'00"	20.00'	31.42'	28.28'	20.00'	S44°39'13"E
C52	90°00'00"	20.00'	31.42'	28.28'	20.00'	N45°20'47"E
C53	49°59'41"	20.00'	17.45'	16.90'	9.33'	S25°20'38"W
C54	49°59'41"	50.00'	43.63'	42.26'	23.31'	S25°20'38"W
C55	90°00'00"	50.00'	78.54'	70.71'	50.00'	S44°39'13"E
C56	90°00'00"	50.00'	78.54'	70.71'	50.00'	N45°20'47"E
C57	49°59'41"	50.00'	43.63'	42.26'	23.31'	N24°39'04"W
C58	49°59'41"	20.00'	17.45'	16.90'	9.33'	N24°39'04"W
C59	22°25'13"	125.00'	48.91'	48.60'	24.77'	S78°26'37"E
C60	22°25'13"	75.00'	29.35'	29.16'	14.86'	N78°26'37"W
C61	90°00'00"	20.00'	31.42'	28.28'	20.00'	S45°20'47"W
C62	90°00'00"	20.00'	31.42'	28.28'	20.00'	N44°39'13"W
C63	49°59'41"	20.00'	17.45'	16.90'	9.33'	S24°39'04"E
C64	49°59'41"	50.00'	43.63'	42.26'	23.31'	S24°39'04"E
C65	90°00'00"	50.00'	78.54'	70.71'	50.00'	S45°20'47"W



HEALTH CERTIFICATE

SANITARY RESTRICTIONS AS REQUIRED BY IDAHO CODE, TITLE 50, CHAPTER 13 HAVE BEEN SATISFIED BASED ON THE STATE OF IDAHO, DEPARTMENT OF ENVIRONMENTAL QUALITY (DEQ) APPROVAL OF THE DESIGN PLANS AND SPECIFICATIONS AND THE CONDITIONS IMPOSED ON THE DEVELOPER FOR CONTINUED SATISFACTION OF THE SANITARY RESTRICTIONS. BUYER IS CAUTIONED THAT AT THE TIME OF THIS APPROVAL, NO DRINKING WATER OR SEWER/SEPTIC FACILITIES WERE CONSTRUCTED. BUILDING CONSTRUCTION CAN BE ALLOWED WITH APPROPRIATE BUILDING PERMITS IF DRINKING WATER OR SEWER FACILITIES HAVE SINCE BEEN CONSTRUCTED OR IF THE DEVELOPER IS SIMULTANEOUSLY CONSTRUCTING THOSE FACILITIES. IF THE DEVELOPER FAILS TO CONSTRUCT FACILITIES OR MEET THE OTHER CONDITIONS OF DEQ, THEN SANITARY RESTRICTIONS MAY BE REIMPOSED, IN ACCORDANCE WITH SECTION 50-1326, IDAHO CODE, BY THE ISSUANCE OF A CERTIFICATE OF DISAPPROVAL, AND NO CONSTRUCTION OF ANY BUILDING OR SHELTER REQUIRING DRINKING WATER OR SEWER/SEPTIC FACILITIES SHALL BE ALLOWED.

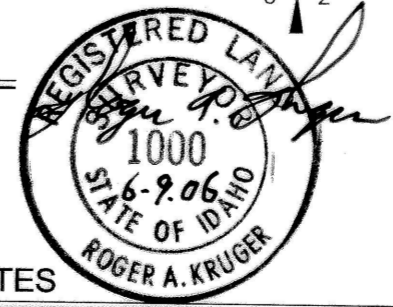
DISTRICT HEALTH DEPARTMENT, IDAHO
 DATE: June 8, 2006
 Evered H. Gibby

LEGEND

- SUBDIVISION BOUNDARY
- ROAD CENTERLINE
- LOT LINE
- EASEMENT LINE
- EXISTING CLEAR DRAIN
- TO BE SET 1/2"x24" REBAR AND CAP LS 1000
- TO BE SET 5/8"x30" REBAR AND CAP LS 1000
- FOUND 1/2" REBAR, REPLACED WITH 5/8"x30" REBAR AND CAP LS1000
- FOUND 5/8" REBAR
- ANGLE POINT

NOTES

- TRACT A AND B ARE RESERVED FOR DRAINAGE RETENTION, AND OTHER USES DESIGNATED HEREON, AND SHALL BE MAINTAINED BY THE ENSIGN POINT HOMEOWNERS ASSOCIATION.
- TRACT A AND BLOCK 1 SHALL HAVE THE SAME OWNERSHIP AND CANNOT BE SOLD SEPARATELY.



EHM Engineers Inc.
 ENGINEERS/SURVEYORS/PLANNERS