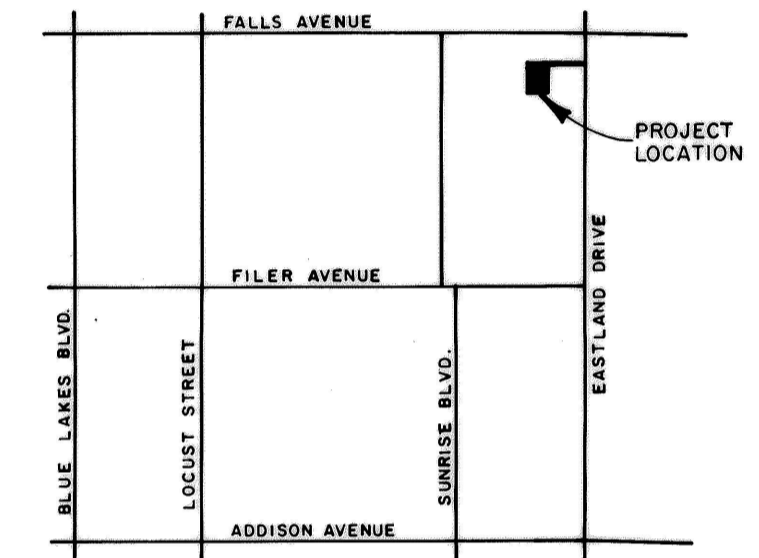
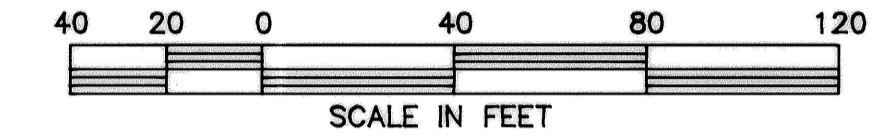
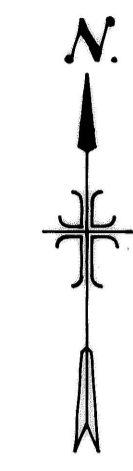


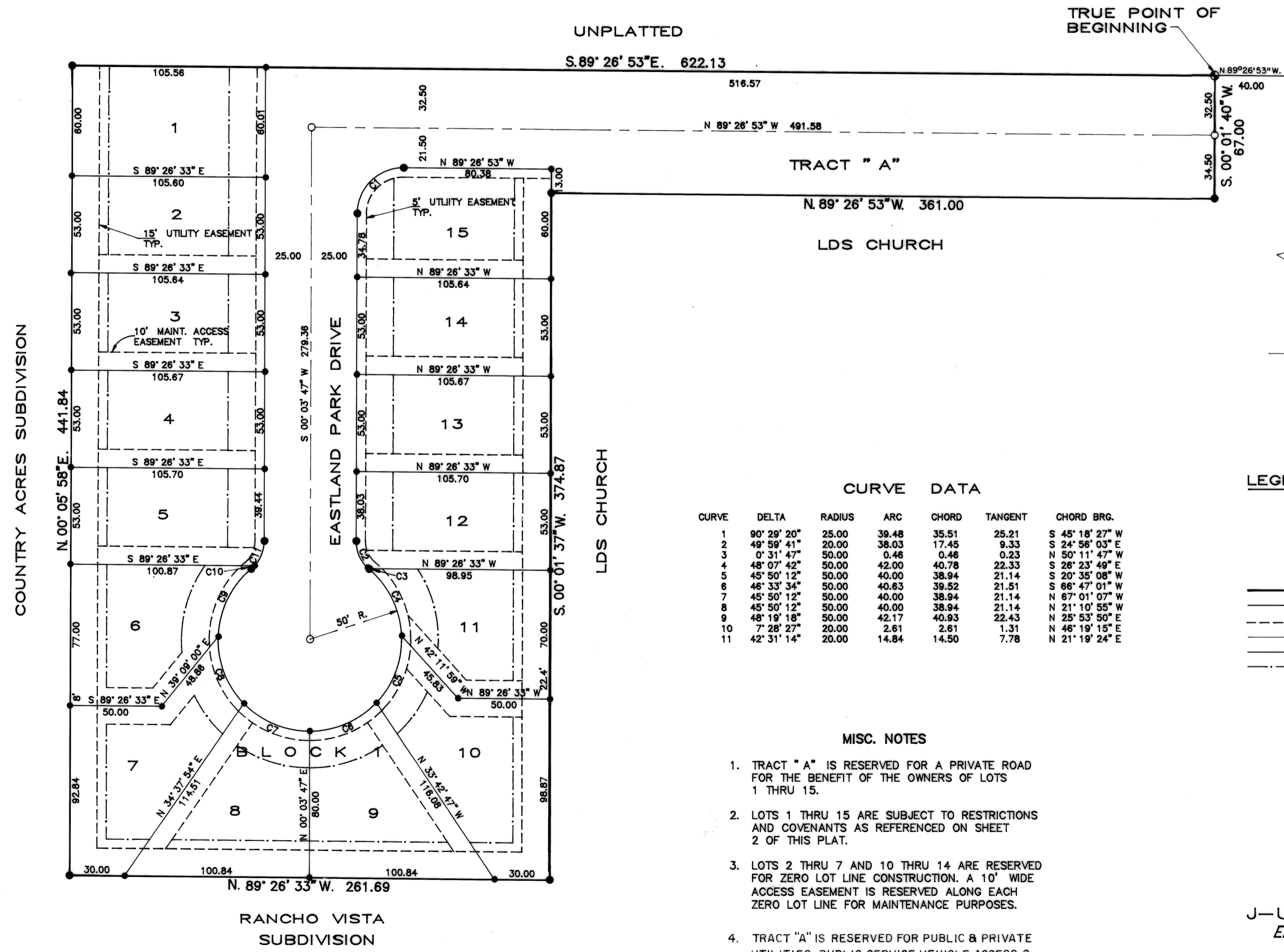
# PLAT SHOWING EASTLAND PARK SUBDIVISION

SECTION 10, TOWNSHIP 10 SOUTH, RANGE 17 EAST,  
BOISE MERIDIAN  
TWIN FALLS, TWIN FALLS COUNTY, IDAHO  
1991

3 2  
10 11  
220.00  
S 00° 01' 40" W  
B.O.B.



VICINITY MAP  
SCALE: 1" = 2000'



UNPLATTED

S. 89° 26' 53" E. 622.13

TRACT "A"

N. 89° 26' 53" W. 361.00

LDS CHURCH

### CURVE DATA

CURVE	DELTA	RADIUS	ARC	CHORD	TANGENT	CHORD BRG.
1	90° 29' 20"	25.00	39.48	35.51	25.21	S 45° 18' 27" W
2	49° 59' 41"	20.00	38.03	17.45	9.33	S 24° 56' 03" E
3	0° 31' 47"	50.00	0.46	0.46	0.23	N 50° 11' 47" W
4	48° 07' 42"	50.00	42.00	40.78	22.33	S 28° 23' 49" E
5	45° 50' 12"	50.00	40.00	38.94	21.14	S 20° 35' 08" W
6	46° 33' 34"	50.00	40.63	39.52	21.51	S 66° 47' 01" W
7	45° 50' 12"	50.00	40.00	38.94	21.14	N 67° 01' 07" W
8	45° 50' 12"	50.00	40.00	38.94	21.14	N 21° 10' 55" W
9	48° 19' 18"	50.00	42.17	40.93	22.43	N 25° 53' 50" E
10	7° 28' 27"	20.00	2.61	2.61	1.31	N 46° 19' 15" E
11	42° 31' 14"	20.00	14.84	14.50	7.78	N 21° 19' 24" E

### MISC. NOTES

- TRACT "A" IS RESERVED FOR A PRIVATE ROAD FOR THE BENEFIT OF THE OWNERS OF LOTS 1 THRU 15.
- LOTS 1 THRU 15 ARE SUBJECT TO RESTRICTIONS AND COVENANTS AS REFERENCED ON SHEET 2 OF THIS PLAT.
- LOTS 2 THRU 7 AND 10 THRU 14 ARE RESERVED FOR ZERO LOT LINE CONSTRUCTION. A 10' WIDE ACCESS EASEMENT IS RESERVED ALONG EACH ZERO LOT LINE FOR MAINTENANCE PURPOSES.
- TRACT "A" IS RESERVED FOR PUBLIC & PRIVATE UTILITIES, PUBLIC SERVICE VEHICLE ACCESS & EMERGENCY VEHICLE ACCESS.

### LEGEND

- Brass Cap
- Set 3/4" Iron Pin with Plastic Cap
- Set 5/8" Iron Pin with Plastic Cap
- Set 1/2" x 24" Iron Pin
- Boundary Line
- Lot Line
- Utility, Drainage and Irrigation Easement Line
- Section Line
- Existing Sewer Service Line
- Building Envelope

TWIN FALLS COUNTY, IDAHO  
 RECORDED FOR: City of TF  
 1991 SEP 30 P 2:01  
 EX-OFFICE RECORDER  
 FEE: 1100/DEPUTY: CP

EASTLAND PARK SUB  
 BOOK 13 PAGE 46

Twin Falls County, Idaho  
 Recorded for:  
 CITY OF TF  
 02:01:00 pm Sep. 30, 1991  
**1991-008662**

**J-U-B ENGINEERS, INC.**  
 Engineers Surveyors Planners  
 Twin Falls, Idaho