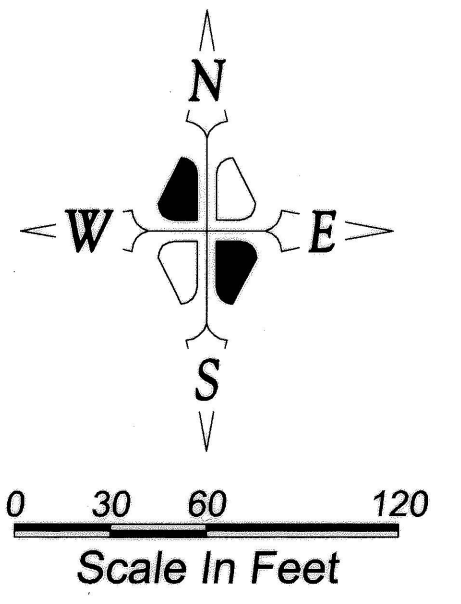


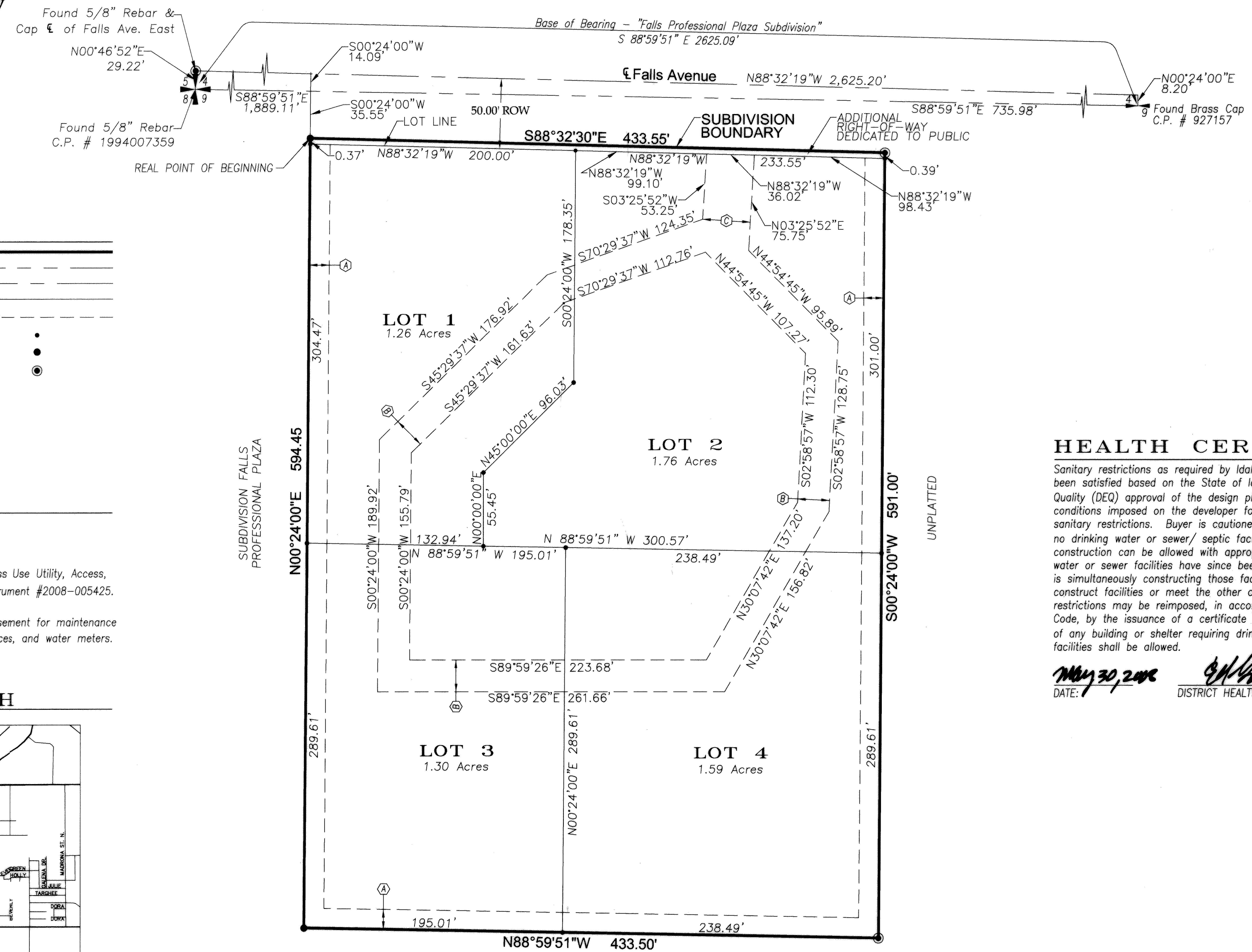
# EAGLE POINTE SUBDIVISION

Located In  
**NE 1/4 NW1/4, Section 9**  
**Township 10 South, Range 17 East**  
**Boise Meridian**  
**Twin Falls County**  
**Idaho**  
**2008**

TWIN FALLS COUNTY  
 RECORDED FOR:  
 EHM ENGINEERS  
 8:38:19 am 06-19-2008  
**2008-014011**  
 NO. PAGES: 2 FEE: \$22.00  
 KRISTINA GLASCOCK  
 COUNTY CLERK  
 DEPUTY: CNICE



COLLEGE OF SOUTHERN IDAHO



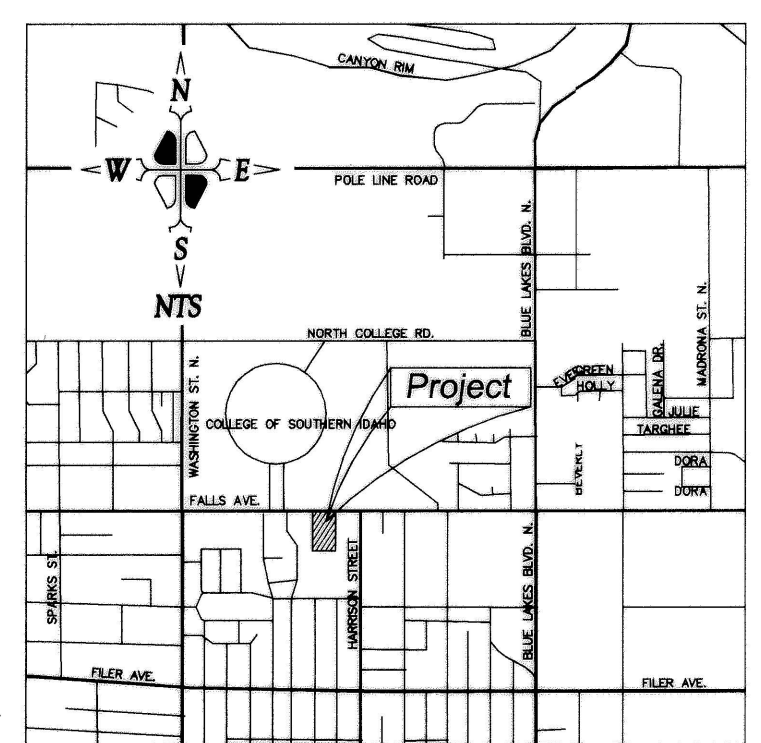
## LEGEND

- Boundary Line
- Section Line
- Center Line of Street
- Lot Line
- Easement Line (See Table)
- Set 1/2"x24" Rebar and Cap (LS 1000)
- Set 5/8"x30" Rebar and Cap (LS 1000)
- Found 5/8" Rebar

## EASEMENTS

- (A) 15.00' Utility Easement
  - (B) 24.00' Access Easement
  - (C) 36.00' Access Easement
- Lots 1, 2, 3 and 4 are Subject to a Cross Use Utility, Access, Parking and Landscaping Agreement. Instrument #2008-005425.
- Lots 1, 2, 3 and 4 are subject to an easement for maintenance and operation of water mains, water services, and water meters.

## VICINITY SKETCH

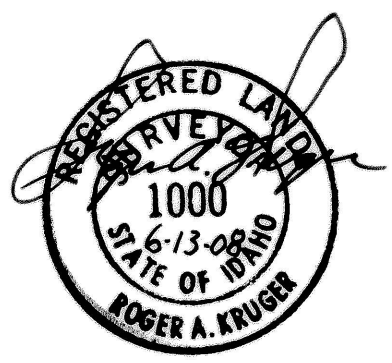


## HEALTH CERTIFICATE

Sanitary restrictions as required by Idaho Code, Title 50, Chapter 13 have been satisfied based on the State of Idaho, Department of Environmental Quality (DEQ) approval of the design plans and specifications and the conditions imposed on the developer for continued satisfaction of the sanitary restrictions. Buyer is cautioned that at the time of this approval, no drinking water or sewer/ septic facilities were constructed. Building construction can be allowed with appropriate building permits if drinking water or sewer facilities have since been constructed or if the developer is simultaneously constructing those facilities. If the developer fails to construct facilities or meet the other conditions of DEQ, then sanitary restrictions may be reimposed, in accordance with Section 50-1326, Idaho Code, by the issuance of a certificate of disapproval, and no construction of any building or shelter requiring drinking water or sewer/ septic facilities shall be allowed.

DATE: May 30, 2008  
 DISTRICT HEALTH DEPARTMENT, REHS

TWIN FALLS COUNTY  
 RECORDED FOR:  
 EHM ENGINEERS  
 8:38:19 am 06-19-2008  
**2008-014011**  
 NO. PAGES: 2 FEE: \$22.00  
 KRISTINA GLASCOCK  
 COUNTY CLERK  
 DEPUTY: CNICE



**EHM** Engineers, Inc.  
 ENGINEERS/SURVEYORS/PLANNERS