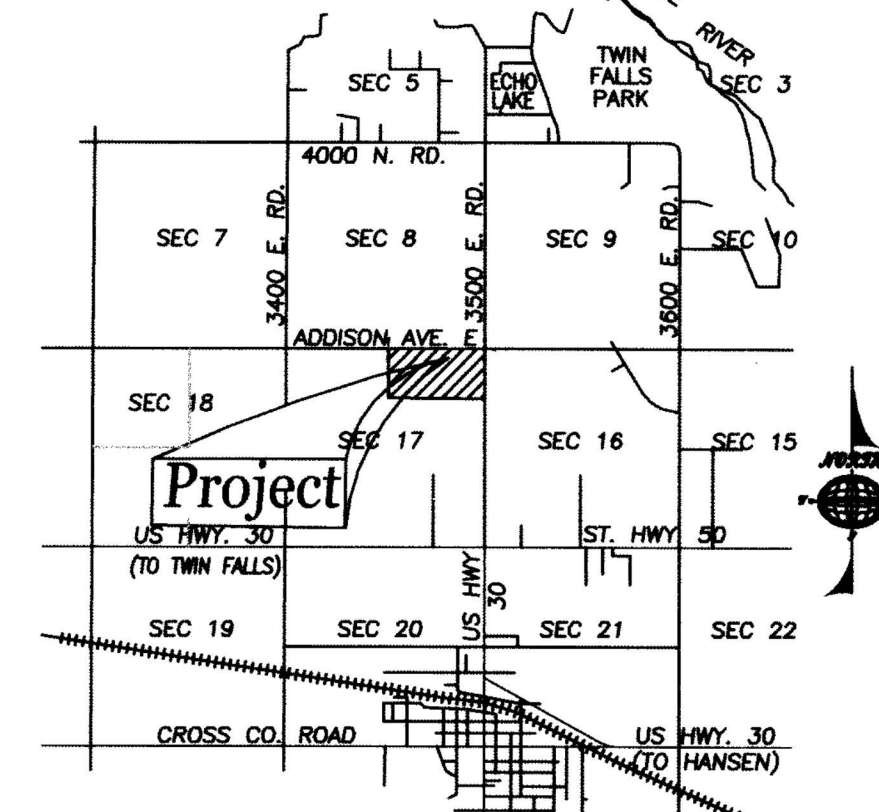


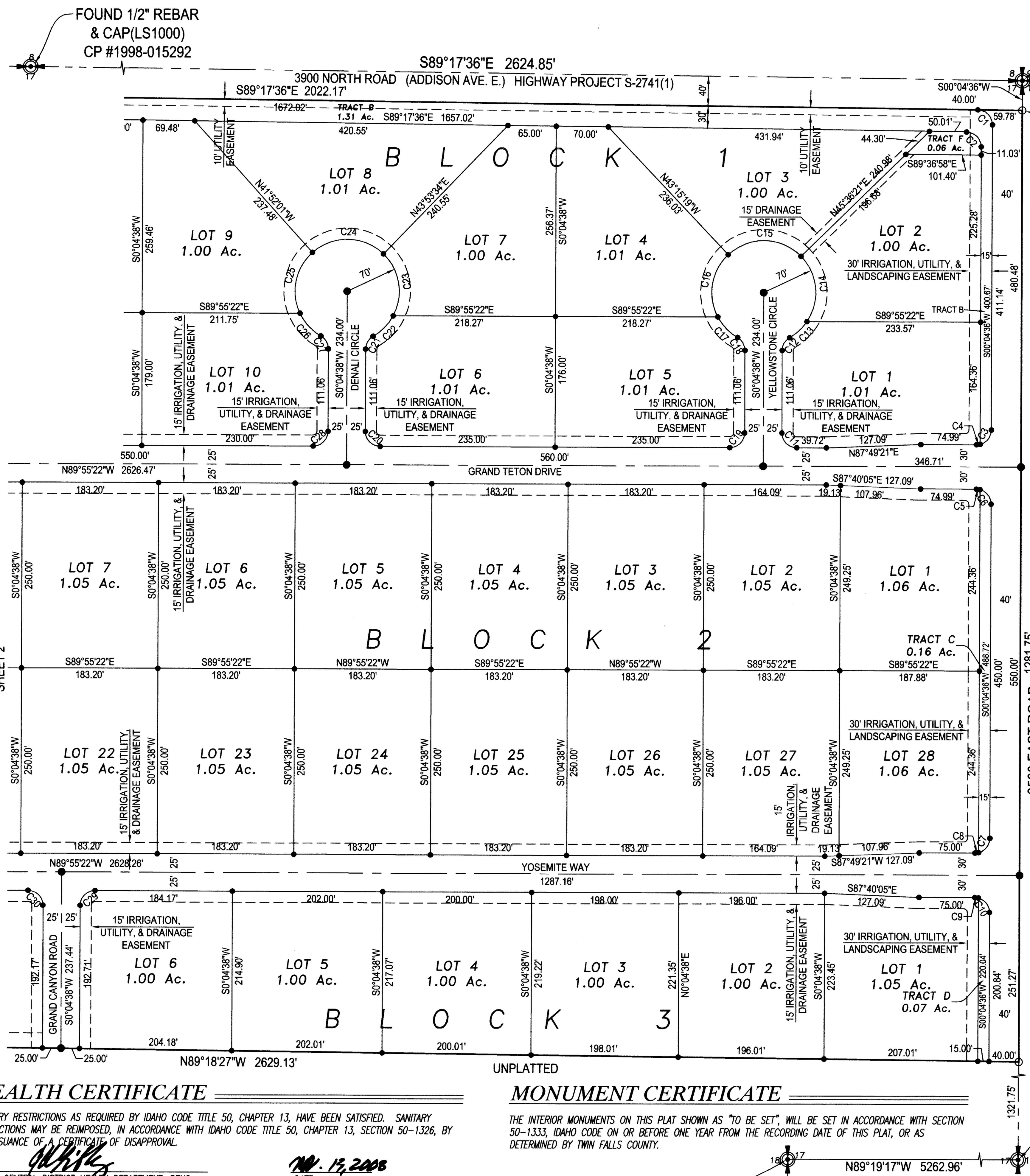
DESTINATION POINTE SUBDIVISION

LOCATED IN
A PORTION OF
N1/2 NE1/4, SECTION 17
TOWNSHIP 10 SOUTH, RANGE 18 EAST
BOISE MERIDIAN, TWIN FALLS COUNTY
IDAHO
2008

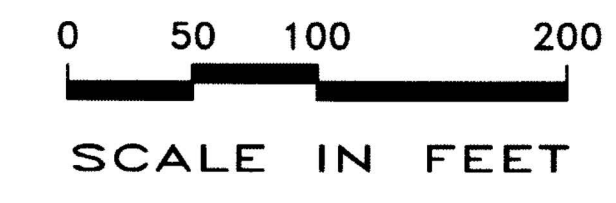


VICINITY MAP

nts



FOUND ALUMINUM CAP
CP #627139

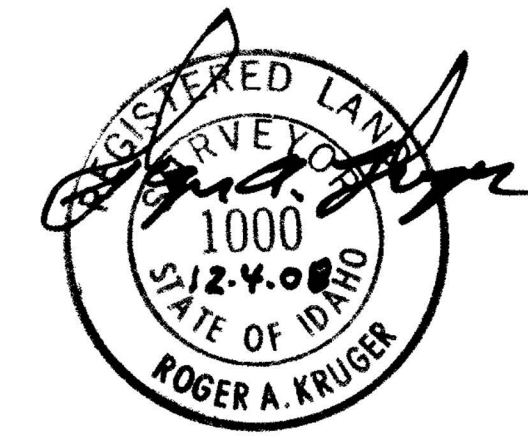


LEGEND

- Subdivision Boundary Line
- Lot Line
- Section Line
- Centerline of Street
- Easement Line
- Found Monument as Noted
- Found 5/8" Rebar and Cap (LS 1000)
- Set 1/2"x24" Rebar and Cap (LS 1000)
- Set 5/8"x30" Rebar and Cap (LS 1000)
- To Be Set 1/2"x24" Rebar and Cap (LS 1000)
- To Be Set 5/8"x30" Rebar and Cap (LS 1000)

3500 EAST ROAD 1281.75'
S00°04'36"W 2643.51'
BASE BEARING SURVEY INST # 2006-008211

TWIN FALLS COUNTY
RECORDED FOR:
EHM ENGINEERS
11:37:29 am 01-21-2009
2009-001184
NO. PAGES: 4 FEE: \$44.00
KRISTINA GLASCOCK
COUNTY CLERK
DEPUTY: SHUNTER



FOUND 1/2" REBAR
CP #770110

FOUND 5/8" REBAR
CP #2000-010613

NOTE:
TRACTS A,B,C,D,E, & F TO BE OWNED AND MAINTAINED BY
THE DESTINATION POINTE HOMEOWNERS ASSOCIATION

CURVE TABLE						
CURVE #	LENGTH	RADIUS	DELTA	TANGENT	CHORD	CHORD BRG
C1	31.20'	20.00'	89°22'12"	19.78'	28.13'	N44°36'30"W
C2	31.20'	20.00'	89°22'12"	19.78'	28.13'	N44°36'30"W
C3	26.36'	20.00'	75°31'21"	15.49'	24.49'	N37°50'16"E
C4	5.05'	20.00'	14°28'41"	2.54'	5.04'	N82°50'17"E
C5	5.05'	20.00'	14°28'37"	2.54'	5.04'	N82°41'07"W
C6	26.36'	20.00'	75°31'21"	15.49'	24.49'	N37°41'05"W
C7	26.36'	20.00'	75°31'21"	15.49'	24.49'	N37°50'17"E
C8	5.05'	20.00'	14°28'41"	2.54'	5.04'	N82°50'16"E
C9	5.05'	20.00'	14°28'37"	2.54'	5.04'	N82°41'04"W
C10	26.36'	20.00'	75°31'21"	15.49'	24.49'	N37°41'04"W
C11	31.42'	20.00'	90°00'00"	20.00'	28.28'	S44°55'22"E
C12	20.94'	20.00'	60°00'00"	11.55'	20.00'	S30°04'38"W
C13	31.94'	70.00'	26°08'30"	16.25'	31.66'	N47°00'23"E
C14	95.70'	70.00'	78°19'47"	57.02'	88.42'	N5°13'45"W
C15	108.56'	70.00'	88°51'40"	68.62'	98.01'	N88°49'29"W
C16	91.38'	70.00'	74°47'41"	53.51'	85.03'	S9°20'51"W
C17	38.94'	70.00'	31°52'23"	19.99'	38.44'	S43°59'11"E
C18	20.94'	20.00'	60°00'00"	11.55'	20.00'	N29°55'22"W
C19	31.42'	20.00'	90°00'00"	20.00'	28.28'	N45°04'38"E
C20	31.42'	20.00'	90°00'00"	20.00'	28.28'	S44°55'22"E
C21	20.94'	20.00'	60°00'00"	11.55'	20.00'	S30°04'38"W
C22	38.94'	70.00'	31°52'23"	19.99'	38.44'	N44°08'27"E
C23	90.79'	70.00'	74°18'41"	53.05'	84.56'	N8°57'05"W
C24	104.78'	70.00'	85°45'36"	65.00'	95.27'	N88°59'14"W
C25	89.71'	70.00'	73°25'58"	52.21'	83.70'	S11°25'00"W
C26	42.30'	70.00'	34°37'23"	21.82'	41.66'	S42°36'40"E
C27	20.94'	20.00'	60°00'00"	11.55'	20.00'	N29°55'22"W
C28	31.42'	20.00'	90°00'00"	20.00'	28.28'	N45°04'38"E
C29	31.42'	20.00'	90°00'00"	20.00'	28.28'	S45°04'38"W

HEALTH CERTIFICATE

SANITARY RESTRICTIONS AS REQUIRED BY IDAHO CODE TITLE 50, CHAPTER 13, HAVE BEEN SATISFIED. SANITARY RESTRICTIONS MAY BE REIMPOSED, IN ACCORDANCE WITH IDAHO CODE TITLE 50, CHAPTER 13, SECTION 50-1326, BY THE ISSUANCE OF A CERTIFICATE OF DISAPPROVAL.

[Signature]
SOUTH CENTRAL DISTRICT HEALTH DEPARTMENT, REHS

DATE: **NOV. 17, 2008**
THE LOTS ON THIS PLAT ARE SUBJECT TO RESTRICTIONS CONCERNING THE LOCATIONS OF WELLS AND SEPTIC SYSTEMS. THESE RESTRICTIONS ARE ON FILE AT THE SOUTH CENTRAL DISTRICT HEALTH DEPARTMENT AND NO SEPTIC PERMITS WILL BE ISSUED WITHOUT THE CONSENT OF THE HEALTH DEPARTMENT AND STRICT CONFORMANCE TO THESE RESTRICTIONS.

MONUMENT CERTIFICATE

THE INTERIOR MONUMENTS ON THIS PLAT SHOWN AS "TO BE SET", WILL BE SET IN ACCORDANCE WITH SECTION 50-1333, IDAHO CODE ON OR BEFORE ONE YEAR FROM THE RECORDING DATE OF THIS PLAT, OR AS DETERMINED BY TWIN FALLS COUNTY.

EHM Engineers Inc.
ENGINEERS/SURVEYORS/PLANNERS