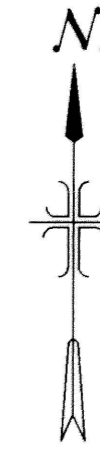
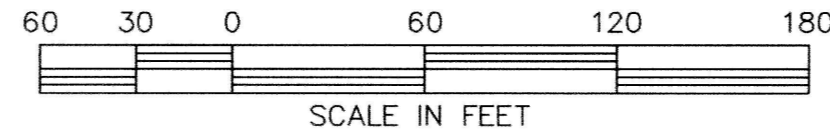


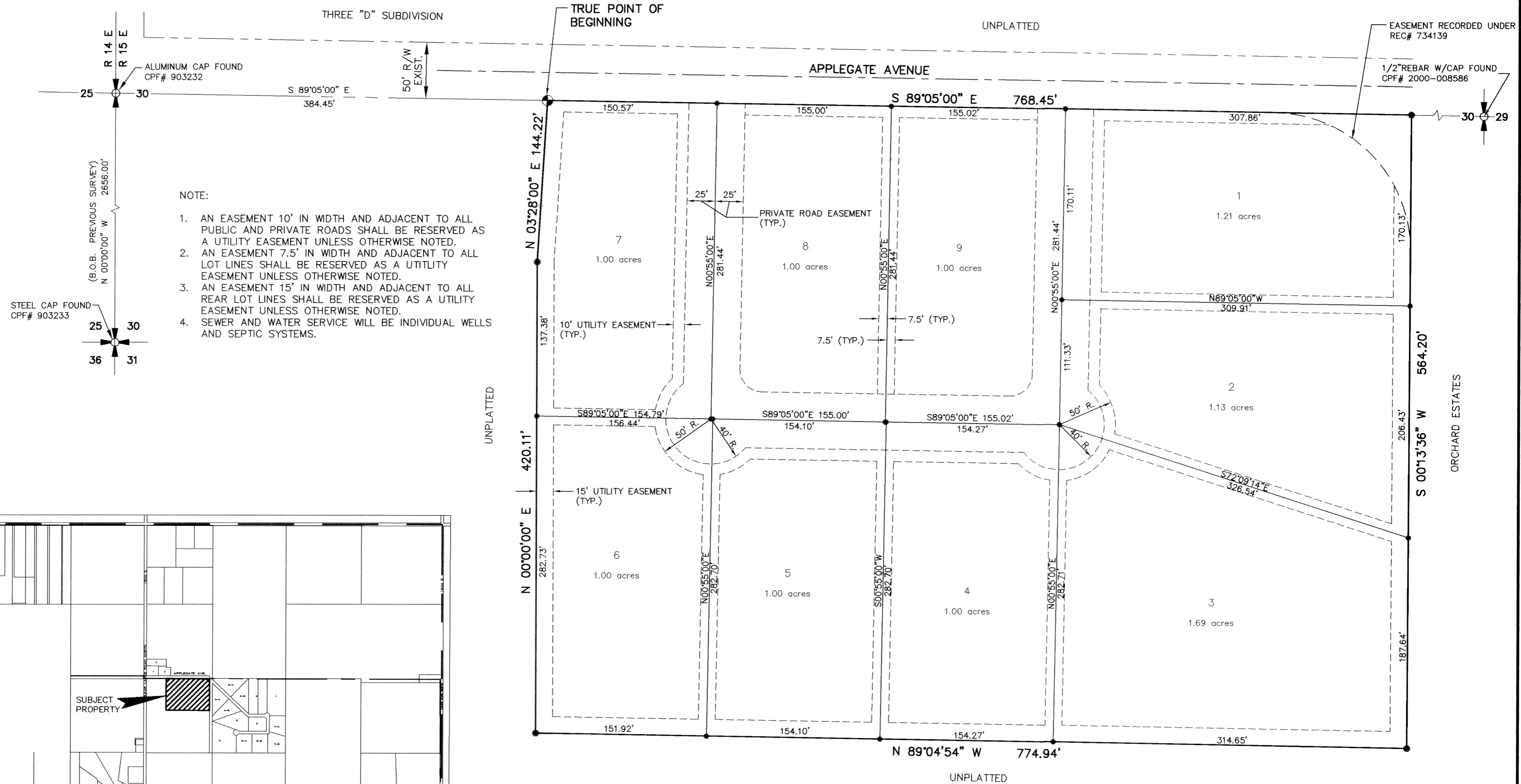
PLAT SHOWING CLEAR LAKES CIRCLE SUBDIVISION

A PORTION OF LOT 3
SECTION 30, TOWNSHIP 9 SOUTH, RANGE 15 EAST, BOISE MERIDIAN
TWIN FALLS COUNTY, IDAHO
2000



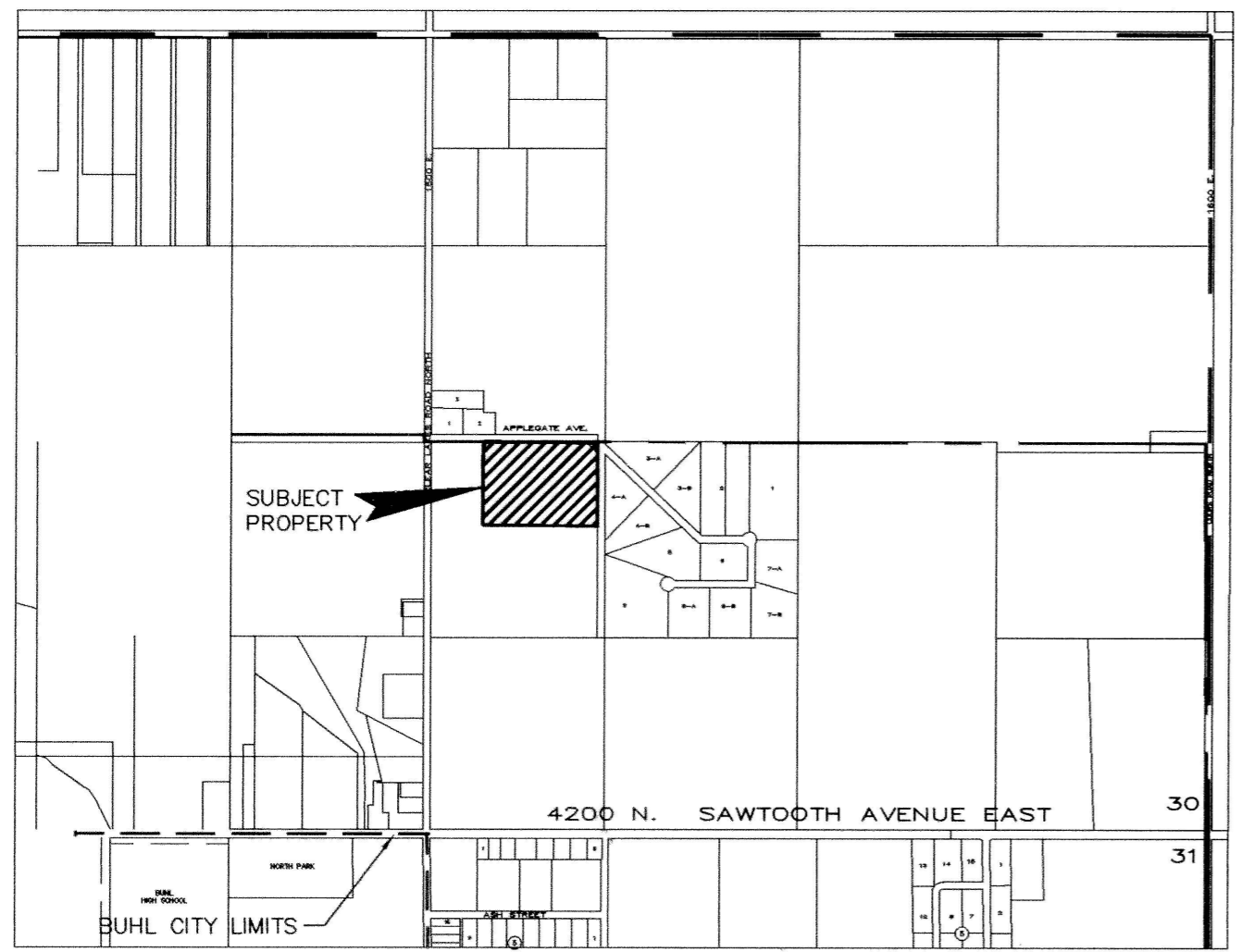
LEGEND

- Set Brass Cap
- Set 5/8" Iron Pin with Plastic Cap
- Set 1/2" x 24" Iron Pin
- Boundary Line
- Lot Line
- Utility, Drainage and Irrigation Easement Line
- Center Line
- Right of Way



NOTE:

1. AN EASEMENT 10' IN WIDTH AND ADJACENT TO ALL PUBLIC AND PRIVATE ROADS SHALL BE RESERVED AS A UTILITY EASEMENT UNLESS OTHERWISE NOTED.
2. AN EASEMENT 7.5' IN WIDTH AND ADJACENT TO ALL LOT LINES SHALL BE RESERVED AS A UTILITY EASEMENT UNLESS OTHERWISE NOTED.
3. AN EASEMENT 15' IN WIDTH AND ADJACENT TO ALL REAR LOT LINES SHALL BE RESERVED AS A UTILITY EASEMENT UNLESS OTHERWISE NOTED.
4. SEWER AND WATER SERVICE WILL BE INDIVIDUAL WELLS AND SEPTIC SYSTEMS.



HEALTH CERTIFICATE

SANITARY RESTRICTIONS AS REQUIRED BY IDAHO CODE TITLE 50, CHAPTER 13, HAVE BEEN SATISFIED. SANITARY RESTRICTIONS MAY BE REIMPOSED, IN ACCORDANCE WITH IDAHO CODE TITLE 50, CHAPTER 13, SECTION 50-1326, BY THE ISSUANCE OF A CERTIFICATE OF DISAPPROVAL.

DATE: June 16, 2000

SOUTH CENTRAL DISTRICT HEALTH DEPT., EHS

J-U-B ENGINEERS, INC.
Engineers Surveyors Planners
Twin Falls, Idaho

Twin Falls County, Idaho
Recorded for:
JUB ENGINEERS
03:46pm Jun. 16.2000
2000 - 009171
No. of Pages: 3
Robert S. Fort: 822.88
Ex-Officio Recorder
Deputy: SL