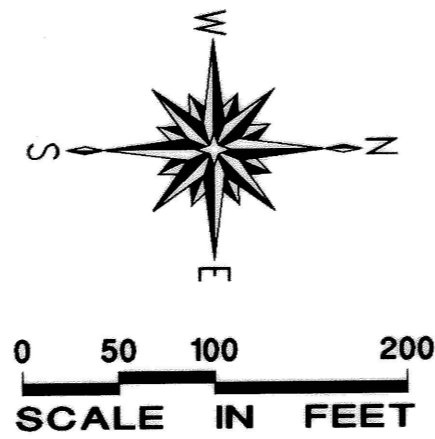


# CANYON MIST ESTATES SUBDIVISION NO. 1

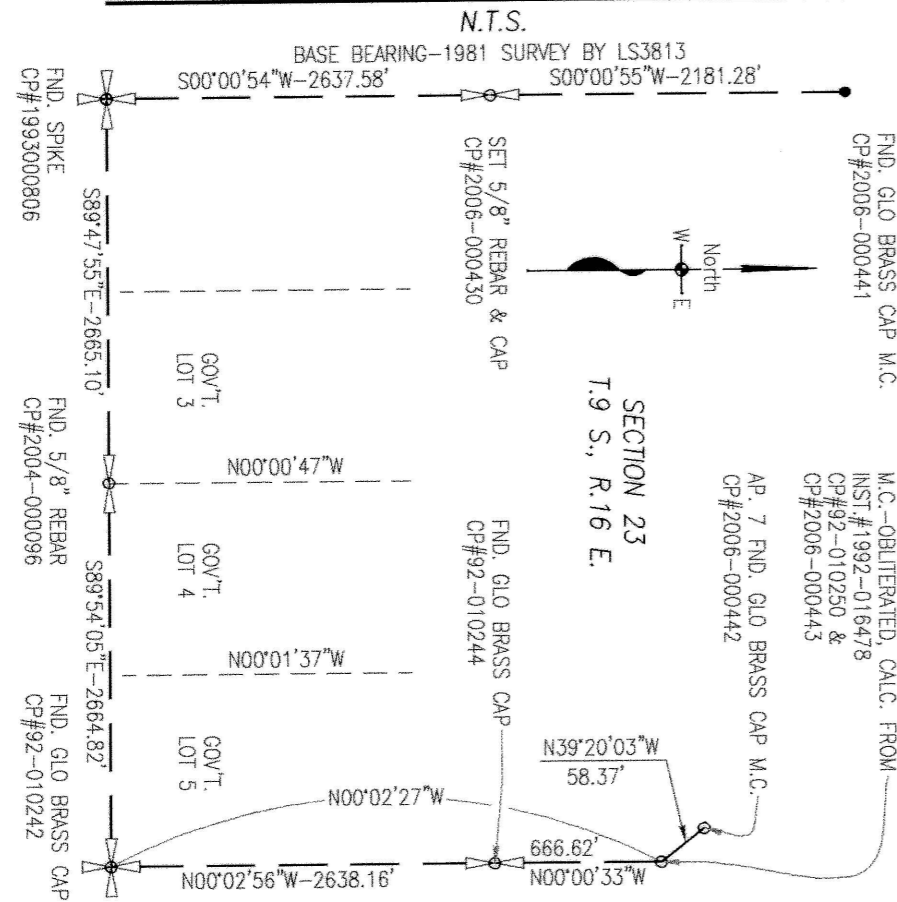
LOCATED IN A PORTION OF  
GOV'T. LOTS 4 & 18, SECTION 23  
T.9 S., R.16 E., B.M.  
TWIN FALLS COUNTY, IDAHO  
2006

LINE	LENGTH	BEARING
L1	70.10'	N89°54'05"W
L2	25.00'	N00°05'55"E
L3	26.24'	S72°26'59"E
L4	37.79'	S64°27'01"E
L5	108.73'	S82°20'06"E
L6	45.19'	S62°04'27"E
L7	73.14'	S37°56'37"E
L8	103.21'	S77°00'26"E
L9	125.60'	S36°27'50"E
L10	92.49'	S73°16'06"E
L11	132.57'	S67°23'48"E
L12	25.00'	S89°54'05"E
L13	45.10'	S89°54'05"E
L14	25.00'	N25°47'09"E
L15	25.00'	N25°47'09"E

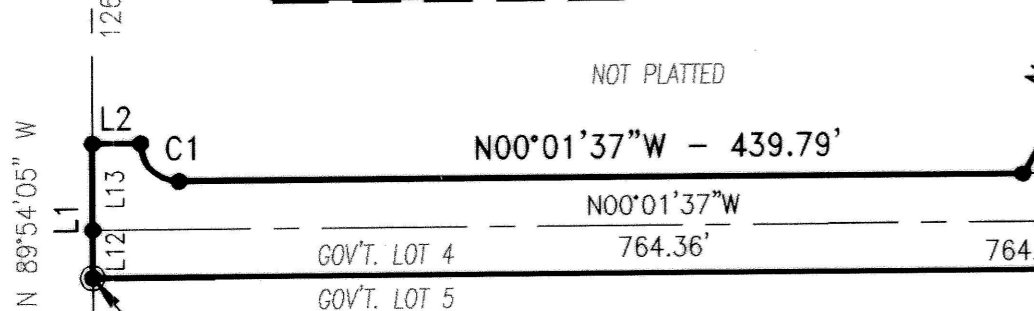
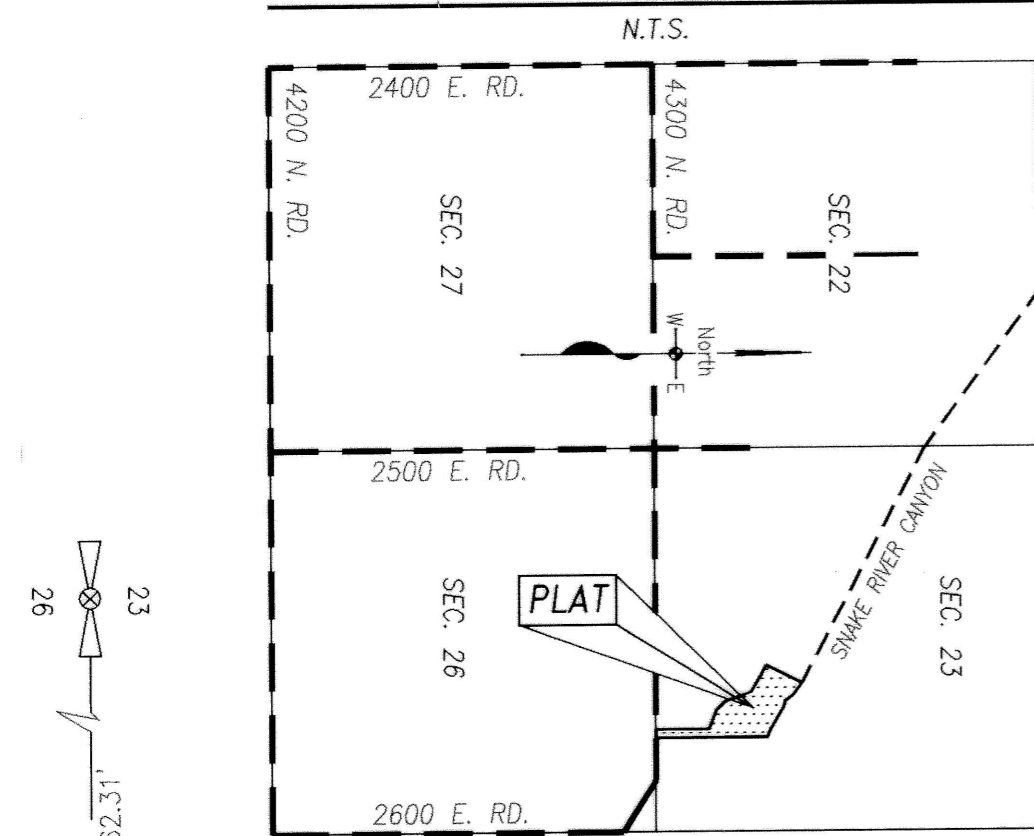
CURVE	DELTA	RADIUS	ARC	CHORD	TANGENT	L.C.B.
C1	90°07'32"	20.00'	31.46'	28.32'	20.04'	N45°02'09"E
C2	61°50'20"	225.00'	242.84'	231.22'	134.76'	N30°56'47"W
C3	61°50'20"	250.00'	269.82'	256.92'	149.74'	N30°56'47"W
C4	61°50'20"	275.00'	296.81'	282.61'	164.71'	N30°56'47"W
C5	24°42'58"	275.00'	118.63'	117.71'	60.25'	S49°30'28"E
C6	24°42'58"	250.00'	107.84'	107.01'	54.77'	S49°30'28"E
C7	12°21'29"	225.00'	48.53'	48.44'	24.36'	S55°41'12"E
C8	12°21'29"	225.00'	48.53'	48.44'	24.36'	S43°19'43"E
C9	27°03'52"	375.00'	177.14'	175.49'	90.25'	N50°40'54"W
C10	27°03'52"	400.00'	188.95'	187.19'	96.27'	N50°40'54"W
C11	13°31'56"	425.00'	100.38'	100.14'	50.42'	N43°54'56"W
C12	13°31'56"	425.00'	100.38'	100.14'	50.42'	N57°26'53"W



## SECTION BREAKDOWN



## VICINITY SKETCH



REAL POINT  
OF BEGINNING  
FND. 5/8" REBAR  
& CAP (LS 865)

## LEGEND

- Subdivision Boundary Line
- Lot Line
- Roadway Center Line
- Easement Line
- Set 5/8"x30" Rebar & Cap (LS1000)
- Set 1/2"x24" Rebar & Cap (LS1000)

## EASEMENT LEGEND

- (A) 7.5' Utility, Drainage, and Irrigation Easement
- (B) 15' Roadway, Utility, Drainage, and Irrigation Easement
- (C) 25' Natural Vegetation & Wildlife Habitat Easement

**EAM** Engineers, Inc.  
ENGINEERS/SURVEYORS/PLANNERS



## NOTES

- No buildings are allowed within 75 feet of the Snake River Canyon Rim.
- Owners of Lots 1-8, Block 1, shall construct a 25 foot wide habitat strip immediately adjacent to the Snake River Canyon Rim. Plantings must include natural occurring sages and grasses. No buildings are allowed within this area.
- All lots contained within this subdivision shall utilize evapotranspiration septic systems unless other septic system designs are approved in writing by South Central District Health Department.
- All lots within this subdivision are subject to Idaho Code, § 42-111, allowing each lot to irrigate a maximum of 0.5 acres of land with a total volume of water not to exceed 13,000 gallons per day per individual well.

## HEALTH CERTIFICATE

Sanitary restrictions as required by Idaho Code Title 50, Chapter 13, have been satisfied. Sanitary restrictions may be reimposed, in accordance with Idaho Code Title 50, Chapter 13, Section 50-1326, by the issuance of a certificate of disapproval.

South Central District Health Department, EHS  
Date: May 9, 2006

The lots on this plat are subject to restriction concerning the locations of wells and septic systems. These restrictions are on file at the South Central District Health Department and no septic permits will be issued without the consent of the Health Department and strict conformance to these restrictions.

TWIN FALLS COUNTY  
RECORDED FOR:  
EHM ENGINEERS  
9:55:26 am 05-25-2006  
2006-012578  
NO. PAGES: 3 FEE: \$33.00  
KRISTINA GLASCOCK  
COUNTY CLERK  
DEPUTY: CNICE

TWIN FALLS COUNTY  
RECORDED FOR:  
EHM ENGINEERS  
9:55:26 am 05-25-2006  
2006-012578  
NO. PAGES: 3 FEE: \$33.00  
KRISTINA GLASCOCK  
COUNTY CLERK  
DEPUTY: CNICE