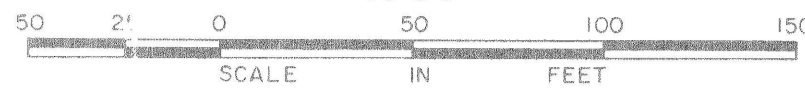
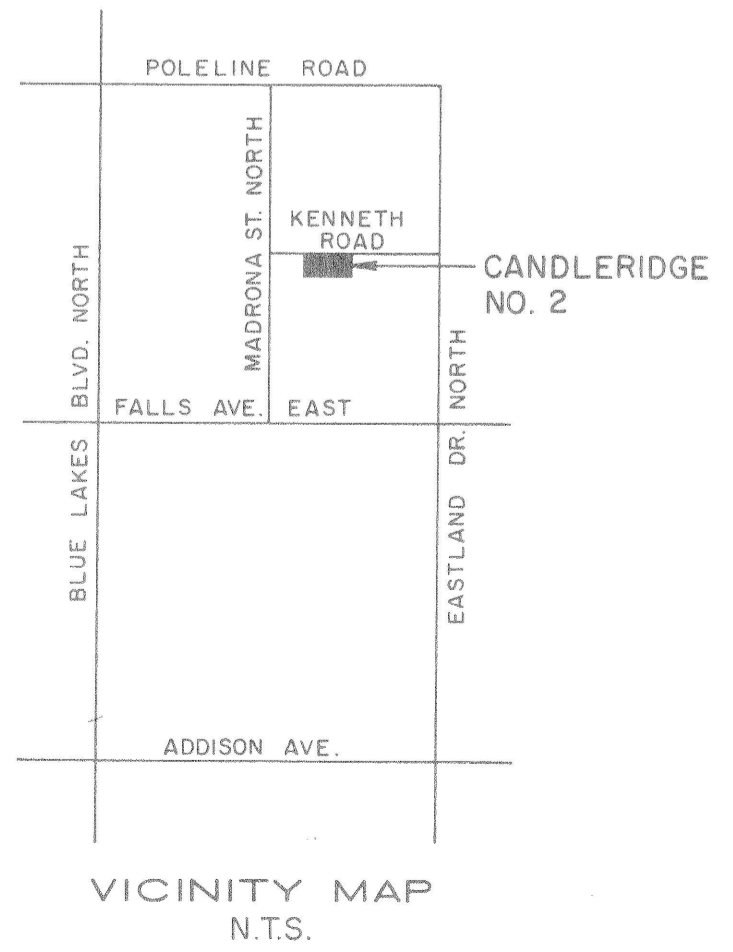
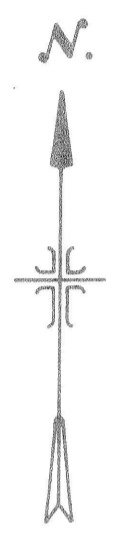
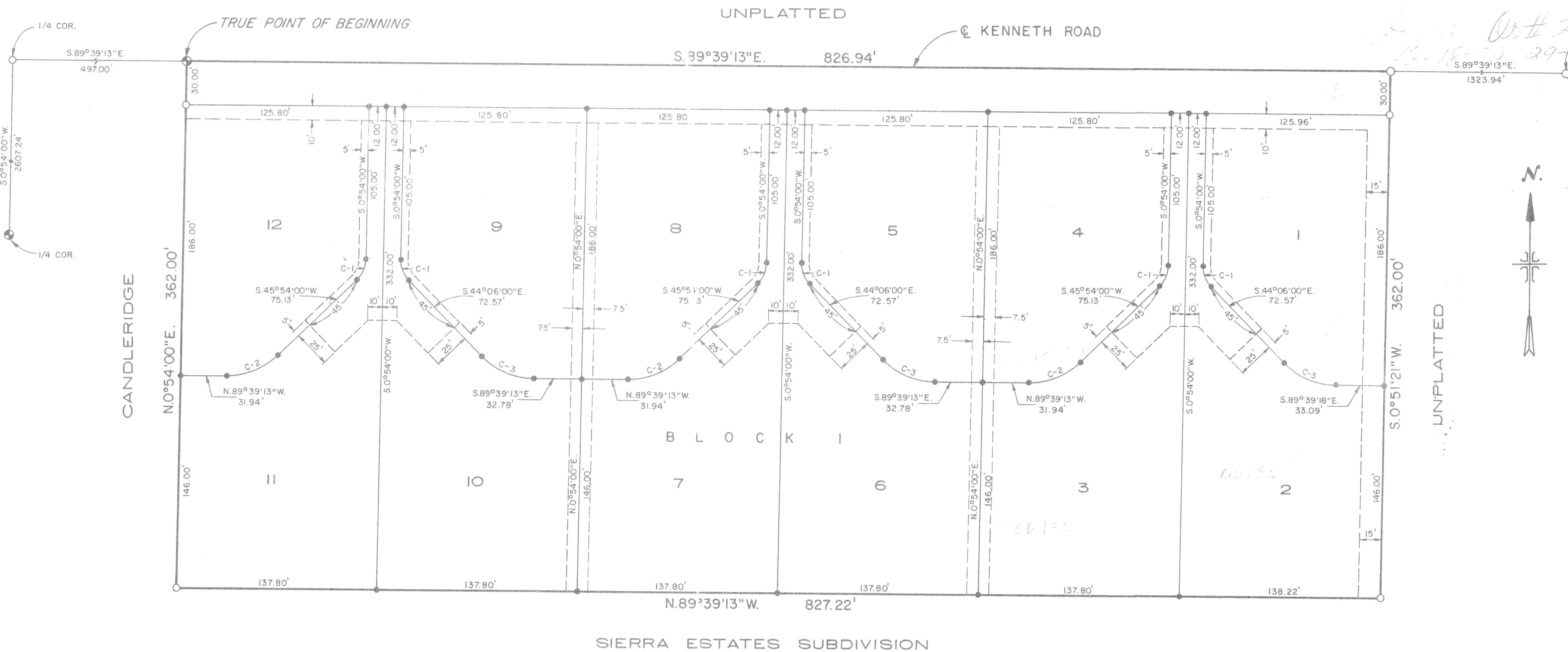


CANDLERIDGE NO. 2
 A SUBDIVISION IN
 NW1/4 SE1/4, SECTION 3, T.10 S., R.17 E., B.M.
 TWIN FALLS, TWIN FALLS COUNTY, IDAHO
 1989



Handwritten notes:
 06/13/82
 T0552
 12-18-89 29-3008
 1/4 COR.



LEGEND

- Boundary Line
- Brass Cap
- 3/4" x 30" Rebar
- 5/8" x 30" Rebar
- 1/2" x 24" Rebar
- - - Public Utilities, Irrigation, Drainage & Fire Access Easement

CURVE DATA

CURVE	R	Δ	T	L	CH. L.	CH. BEARING
C-1	20.00'	45°00'00"	8.28'	15.71'	15.31'	—
C-2	50.00'	44°26'47"	20.43'	38.79'	37.82'	S. 68°07'23" W.
C-3	50.00'	45°33'13"	20.99'	39.75'	38.71'	S. 66°52'36" E.

Handwritten signature and date:
 Dale L. RiedeSEL
 April 24, 1989

SHEET 1 OF 2
DALE L. RIEDESEL P.E./L.S.
 800 FALLS AVENUE, SUITE 3
 TWIN FALLS, IDAHO 83301
 208-733-2446