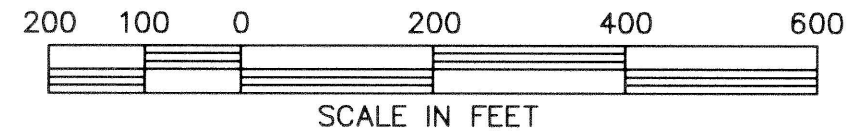


PLAT SHOWING BOURNER SUBDIVISION

GOVERNMENT LOT 2
SECTION 5, TOWNSHIP 10 SOUTH, RANGE 16 EAST, BOISE MERIDIAN
TWIN FALLS COUNTY, IDAHO
2001

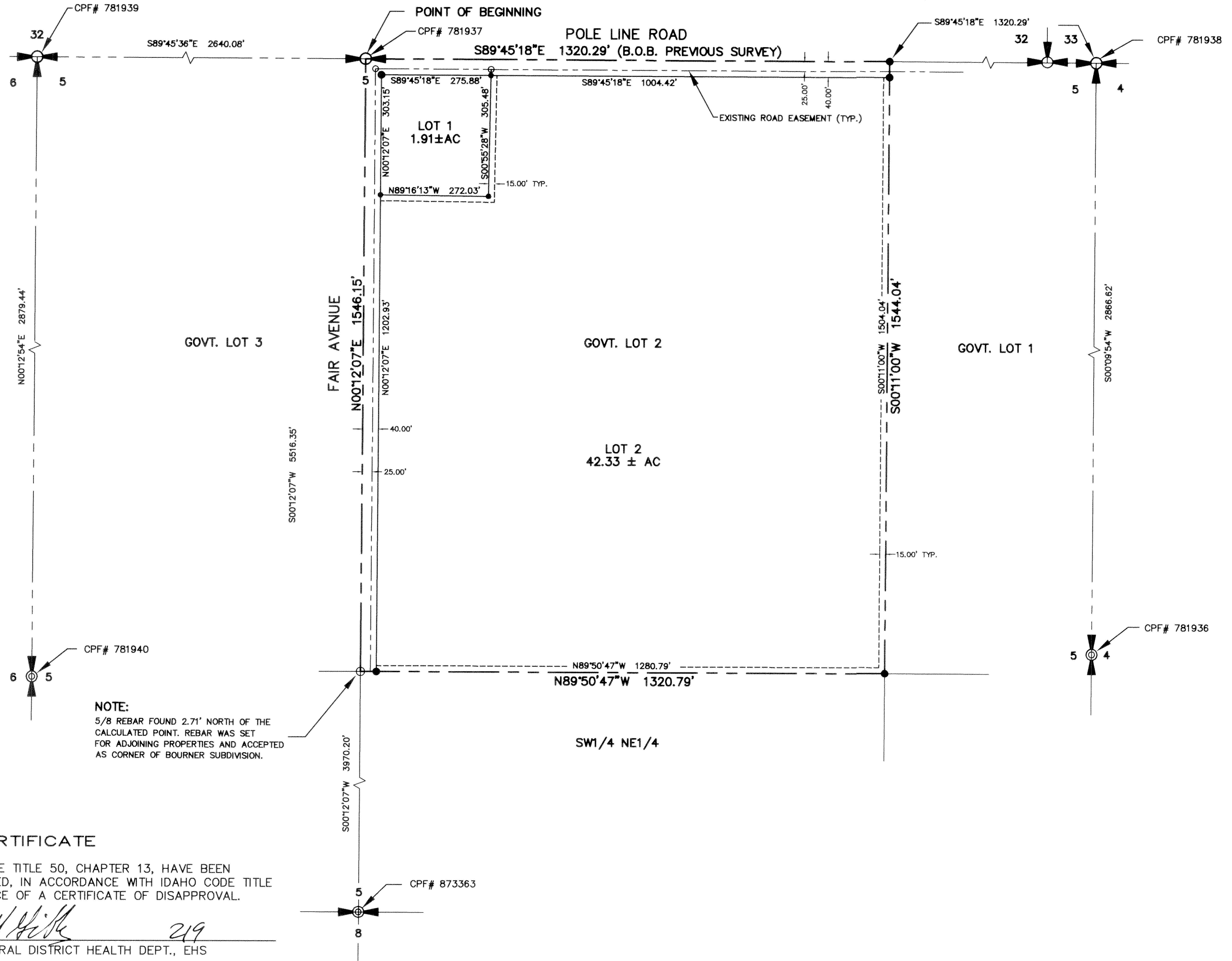
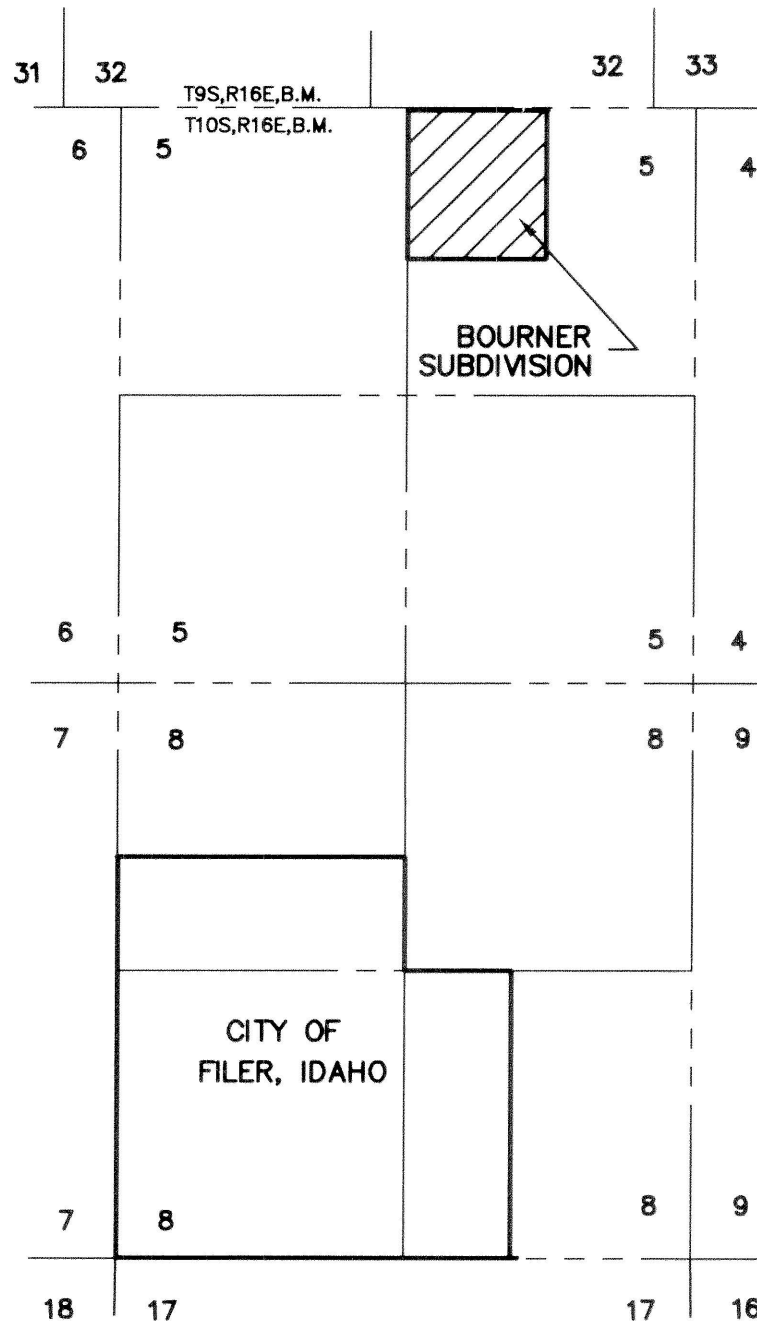


LEGEND

- 3/4" REBAR FOUND
- 1/2" REBAR FOUND
- SET 5/8" REBAR W/ PLASTIC CAP
- SET 1/2" REBAR W/PLASTIC CAP
- BOUNDARY LINE
- ==== LOT LINE
- - - - UTILITY, DRAINAGE AND IRRIGATION EASEMENT LINE
- ==== SECTION LINE

VICINITY SKETCH

NOT TO SCALE



HEALTH CERTIFICATE

SANITARY RESTRICTIONS AS REQUIRED BY IDAHO CODE TITLE 50, CHAPTER 13, HAVE BEEN SATISFIED. SANITARY RESTRICTIONS MAY BE REIMPOSED, IN ACCORDANCE WITH IDAHO CODE TITLE 50, CHAPTER 13, SECTION 50-1326, BY THE ISSUANCE OF A CERTIFICATE OF DISAPPROVAL.

DATE: Aug 1, 2001

[Signature] 219
SOUTH CENTRAL DISTRICT HEALTH DEPT., EHS

J-U-B ENGINEERS, INC.
Engineers Surveyors Planners
Twin Falls, Idaho

Twin Falls County, Idaho
 Recorded For
JUB ENGINEERS
 03:54pm Aug. 08, 2001
2001 - 014251
 No. of Pages: 2 Fee: \$22.00
 OFFICIAL RECORDER
 EX-OFFICIO Recorder
 Deputy: SL